



**ASHLEY**

Shadow-Free Cove Lighting



BIRCHWOOD  
lighting

# ASHLEY

Imagine it...shadow-free cove lighting.

Presenting: ASHLEY - the new reality in effective, uninterrupted diffuse illumination for architectural cove and soffit lighting applications available in LED or fluorescent.

ASHLEY LED features tool-less adjustable aiming up to 15° in 5° increments. Distribution available in Wide (80°) or Narrow (10°) optics.

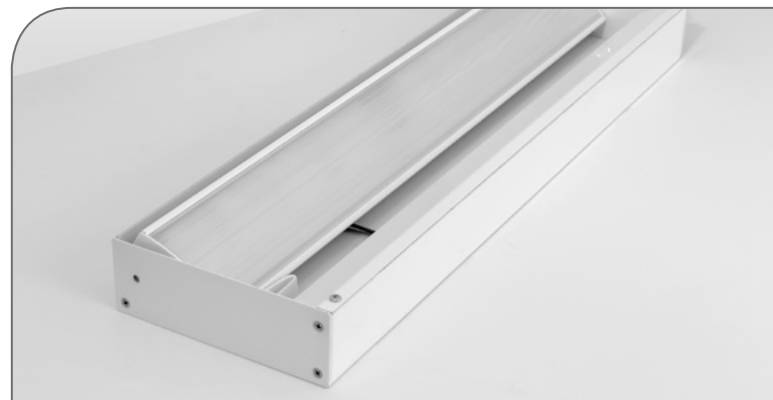
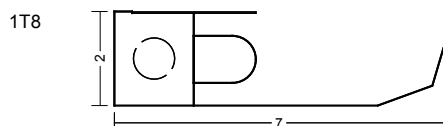
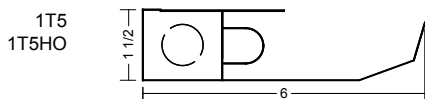
ASHLEY fluorescent features our heavy gauge aluminum Saw-Tooth Deflector / Hammer-Tone Reflector system combines to provide gorgeous, smooth ceiling illumination or wall-washing without shadows, hot-spots, socket shadow or glare.

With efficient lamping options, precise illumination capabilities, easy installation and a variety of housing profiles, ASHLEY makes it possible to realize better cove lighting - imagine that.

## Features and Benefits:

- Tool-less adjustable aiming, (LED)
- Unique Hammertone Reflector / Sawtooth Deflector system provides uniform "shadowless" cove lighting, (fluorescent)
- Heavy gauge aluminum housing works as natural heat-sink material
- Quick connect in-tandem wiring standard feature
- Can be installed as continuous-run
- Integral driver/ballast is standard
- Dimming and Emergency battery pack compatible
- See our "Effective Cove Mounting Guide" for helpful tips
- U.L. and c-U.L. listed for dry and damp locations

## Fluorescent Dimensions

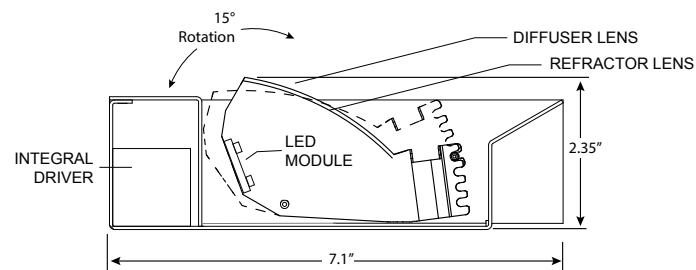


ASHLEY LED



ASHLEY 1T5HO

## LED Dimensions



BIRCHWOOD  
lighting