

HAILEY LED

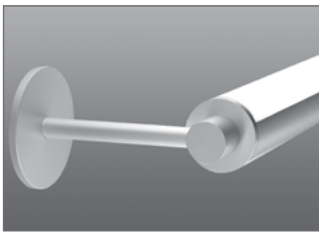
1.25", 2.25", 3.25"

Round Linear LED

RAS | STK | CSS



HAILEY 125 CSS-R



RAS




STK

HAILEY LED combines elegance and efficiency within 1.25", 2.25" and 3.25" housing profiles of heavy duty extruded aluminum.

Variable mounting orientations make HAILEY LED highly adaptable for any interior setting. Rotating functionality (combined with arm, cable or stack mounting) will allow 361° lockable aiming of the lighting optic towards any ceiling, wall or work-plane.

Continuous run installations deliver nearly seamless lines of efficient illumination. Precision-engineered connecting hardware remains invisible within the smooth extruded aluminum housing to insure a smooth, sleek appearance. Choose from a selection of Frosted White or Linear Prismatic acrylic lenses.

HAILEY LED: sophistication, versatility and efficiency combined to elevate your specification. Available in 2' to 8' nominal lengths.

 UL and c-UL listed for dry and damp locations.



Made in the USA

FIXTURE SPECIFICATIONS

Construction

Heavy gauge round extruded aluminum housing. 1/4" thick precision-machined aluminum end-caps. Extruded frosted acrylic lenses specifically engineered to deliver smooth and even illumination while maximizing light and luminaire performance.

Finishes

(SC) Satin Clear anodized is standard finish. Other powder coat finishes available. Consult factory for details.

Fixture Length

Fixtures are available in 2', 3', 4', 6' and 8' nominal lengths (6' and 8' not available for 125). Continuous run mounting available featuring internal adjoining mounting hardware enabling straight and precise rows. See installation section for more details.

Mounting Options

(CSS) Cable Suspension System field-adjustable 1/16" aircraft cable, (STK) Stack mount with straight or bent arm options extending as single-sided or double-sided from the stack housing. (RAS) Rotational Arm System accessory provides 361° directional and lockable aiming with all mounting styles. See ordering guide for possible configurations.

LED Light Engine System

LED Light Engines are available as HLO (High Lumen Output) and SLO (Standard Lumen Output) providing efficient illumination. CLO (Custom Lumen Output) allows for end user specified lumen output or tailored wattage consumption for certain models. Consult factory for details.

Dimming

Dimming is available with a variety of control protocols and options. Consult factory for availability and specifications.

Acrylic Lens

(FW) Frosted White.

Custom and Mods

We proudly specialize in manufacturing custom and modified luminaires and have the ability to modify most of our standard fixtures. Please contact factory with any inquiries.

www.birchwoodlighting.com

Type: _____ Job Name: _____

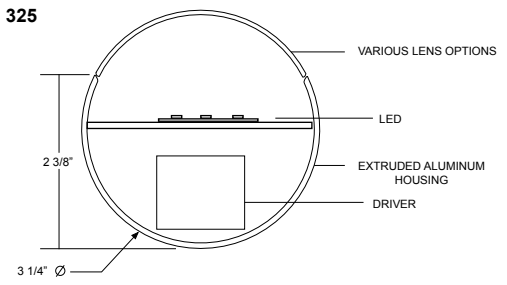
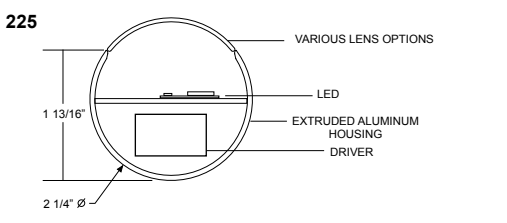
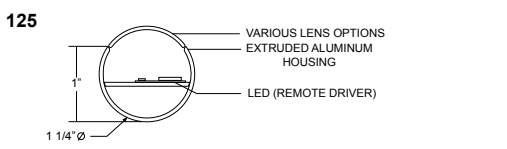
RAS | STK | CSS

SPECIFICATION CODE

model	light engine	color temp	length	finish	lens	voltage	driver	mounting	orientation	standard cable length ³	standard cord color	standard canopy	standard canopy finish	standard cover plate	cover plate finish	arm length	arm style	arm length	arm height	option
-------	--------------	------------	--------	--------	------	---------	--------	----------	-------------	------------------------------------	---------------------	-----------------	------------------------	----------------------	--------------------	------------	-----------	------------	------------	--------

Model	Light Engine	Color Temp	Nominal Length	Finish	Lens	Voltage	Driver	Mounting	Options
HAI-LED-125 - 1.25" diameter	SLO - Standard	27 - 2700K 30 - 3000K 35 - 3500K	2 - 2' 3 - 3' 4 - 4'	Anodized SC - Satin Clear	FW - Frosted White	120 277 347 ⁶	EB - Electronic (standard)	CSS - Cable Suspended (36" standard)	<ul style="list-style-type: none"> CSS - Orientation³ Cable Length³ Cord Color³ Canopy³ Canopy Finish⁴ RAS - Cover Plate/Knuckle³ Cover Finish⁴ Arm Length³ STK - Arm Style³ Arm Length³ Arm Height³ Custom Finish⁴ TB - Cable Tie Back EM⁸ - Emergency Battery Pack
	HAI-LED-225 - 2.25" diameter	HLO - High Lumen Output	6 - 6' ¹ 8 - 8' ¹	Powder Coat MW - Matte White	D1 - 1% (nom.) 0-10V D10 - 10% 0-10V HLA2 ⁷ - Lutron 2 wire HLA3 - Lutron 3 wire	RAS - Rotational Arm System			
	HAI-LED-325 - 3.25" diameter	CLO ⁵ - Custom Lumen Output CLO Calculator	CR ^{2,8} - Continuous Run FB - Flat Black CUP - Custom ⁴	HLH - Lutron H EcoSystem HL5 - Lutron 5 series EcoSystem DALI - DALI	STK1 - Stack Mount Single side arm mount STK2 - Stack Mount Double side arm mount				

Dimensions



NOTES

- 1 not available for 125
- 2 specify length in nominal feet
- 3 see HAILEY options sheet for selections
- 4 contact factory for custom finish
- 5 consult factory for EM options
- 6 available for EB, D1, D10 drivers only
- 7 120V only
- 8 Continuous Run for 125-CSS is disc continous run which creates a .25" break in the continuous run of light

LED

125 (4000K FW lens)
SLO - 121.9 lm/watt delivered @ 2.9 w/ft fixture input watts, 354 lm/ft.
HLO - 119.7 lm/watt delivered @ 5.9 w/ft fixture input watts, 706 lm/ft.
CLO - refer to CLO Calculator 125 LED supplement info
225 (4000K FW lens)
SLO - 120.4 lm/watt delivered @ 2.9 w/ft fixture input watts, 349 lm/ft.
HLO - 118.2 lm/watt delivered @ 5.9 w/ft fixture input watts, 698 lm/ft.
CLO - refer to CLO Calculator 225 LED supplement info
325 (4000K FW lens)
SLO - 105.5 lm/watt delivered @ 4.4 w/ft fixture input watts, 464 lm/ft.
HLO - 99.2 lm/watt delivered @ 9 w/ft fixture input watts, 893 lm/ft.
CLO - refer to CLO Calculator 325 LED supplement info

HAILEY LED

1.25", 2.25", 3.25"

Round Linear LED

RAS | STK | CSS - Options Page

RAS Options

Cover Plate/ Knuckle/Trim Ring

- 4CP - R 4" Cover Plate with 1.25" Knuckle (stnd)
- 4CP - R2 4" Cover Plate with 2.25" Knuckle
- 4CP - R3 4" Cover Plate with 3.25" Knuckle
- 1TR - R 1 1/4" Trim Ring with 1.25" knuckle
- 1TR - R2 1 1/4" Trim Ring with 2.25" knuckle
- 1TR - R3 1 1/4" Trim Ring with 3.25" knuckle

Cover Plate Finish

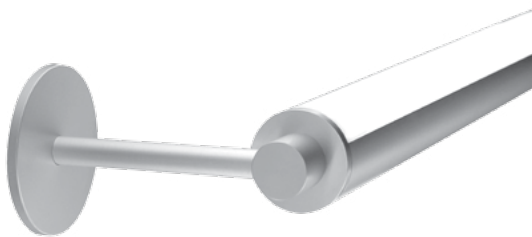
- SC - Satin Clear (standard)
- MW - Matte White
- FB - Flat Black
- CUP - Custom Powder Coat

Max arm lengths without additional support
*For lengths longer than max, Specify "TB" in option section for aircraft cable tie back.

	4'	6'	8'
125	18"	N/A	N/A
225	18"	12"	9"
325	12"	9"	6"

Arm Length

- 6 - 6" (standard)
- 9 - 9"
- 12 - 12"
- 18 - 18"
- CUL - Custom (specify length in inches ex: CUL28)



HAILEY 225 RAS

NOTE
cover plates, knuckles, and arm match housing finish

Stack Options

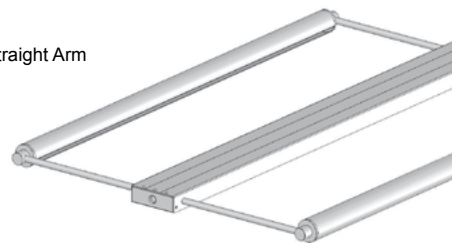
STK1-BA

Single Stack Bent Arm



STK2-SA

Double Stack Straight Arm



Arm Style

- SA - Straight Arm
- BA - Bent Arm
- CA - Custom (supply drawing)

Arm Length

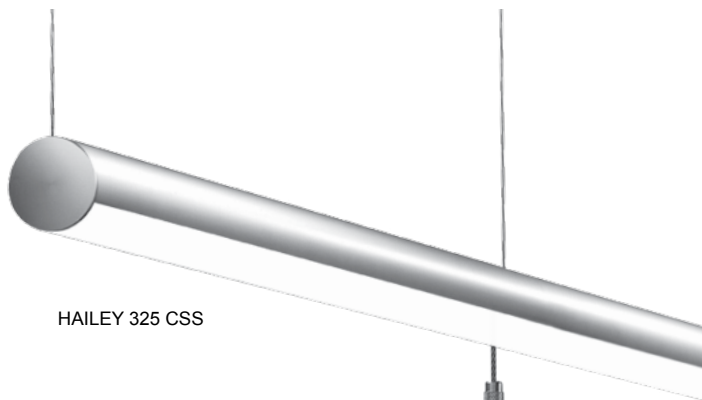
- 6 - 6"
- 9 - 9"
- 12 - 12"
- 18 - 18"
- CUL - Custom (specify length in inches ex: CUL28)

Bent Arm Height

- 6" (standard)
- CUH - Custom Height (specify length in inches ex: CUH28)

NOTE

knuckles and arm match housing finish
stack housing standard is silver powder coat finish



HAILEY 325 CSS



HAILEY 225 CSS-R

CSS Options

Orientation

- DR - Direct
- IN - Indirect
- R - Rotational with 1.25" knuckle¹
- R2 - Rotational with 2.25" knuckle¹
- R3 - Rotational with 3.25" knuckle¹

Cable Length Options

- 36 - 36" (standard)
- 72 - 72"
- 120 - 120"

Power Cord Color Options

- W - White
- B - Black
- G - Gray (standard)

Canopy Options

- STND - Bracket bar w/5" round canopy
- NC - No canopy 1/4-20 side exit cable gripper (1/4-20 stud provided by others)
- CU - Custom (contact factory)

Canopy Finish Options

- MW - Matte White
- SMT - Silver Matte Texture
- CUP - Custom (contact factory)

NOTE

¹ knuckles match housing finish

CUSTOM ALTERNATING DIRECT/INDIRECT FIXTURE CONFIGURATION

