

# KELSEY

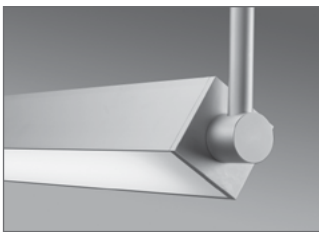
1.25", 2.25", 3.25"

Square Linear Fluorescent

CSS | RAS | SM | STK



KELSEY 225 CSS-R




KELSEY 225 RAS



KELSEY 325 RLW Lens

KELSEY's square linear fluorescent profile features multiple mounting, lens and lamping options within 1.25", 2.25", or 3.25" extruded aluminum housings. The (RAS) Rotating Arm System (available with arm, cable or stack light mounting configurations) allows 361° lockable aiming for precise light distribution on the vertical, horizontal or ceiling plane. (SM) Surface mounting is also available. Continuous run installations deliver nearly seamless lines of efficient illumination by utilizing precision-engineered connecting hardware which remains invisible within the smooth extruded-aluminum housing. Frosted white flush or reveal 3/8" extended acrylic lenses deliver light efficiently to any interior application or design. Flat Blade Semi-Specular Louvers deliver light efficiently to any interior application.

KELSEY offers smooth directional linear illumination within a sharp, streamlined architectural profile. Available as single or double T5, T5HO or T8 lamps, in 2' to 8' nominal lengths.

 UL and c-UL listed for dry and damp locations.

 Made in the USA

## FIXTURE SPECIFICATIONS

### Construction

Heavy gauge square extruded aluminum housing. 1/4" thick precision-machined aluminum end-caps. Extruded acrylic lenses specifically engineered to maximize the performance and transmission from a variety of light sources.

### Lamping

T5, T5HO or T8 linear fluorescent lamps available. Integral electronic ballast standard in T5 2.25" and 3.25" profiles. Remote electronic ballast standard in 1.25" profile. Dimming ballasts and (EM) Emergency battery pack options available, consult factory for compatibility.

### Mounting Options

(CSS) Cable Suspension System field-adjustable 1/16" aircraft cable, (SM) Surface mount, or (STK) Stack mount with straight or bent arm options extending as single-sided or double-sided from the stack housing. (RAS) Rotational Arm System accessory provides 361° directional and lockable aiming for all mounting styles. See ordering guide for possible configurations.

### Acrylic Lens and Louver Options

(FW) Frosted White flush lens or (RLW) Reveal Frosted White with 3/8" extension. (FBLSS) Flat Blade Louver Semi-Specular.

### Finishes

(SC) Satin Clear anodized is standard finish. Other powder coat finishes available. Consult factory for details.

### Fixture Length

Fixtures are available in 2', 3', 4', 6' and 8' nominal lengths. Continuous run mounting and mitered angles available featuring internal adjoining mounting hardware enabling straight and precise rows. See installation section for more details.

### Custom and Mods

We proudly specialize in manufacturing custom and modified luminaires and have the ability to modify most of our standard fixtures. Please contact factory with any inquiries.

www.birchwoodlighting.com

Type: Job Name:

CSS | RAS | SM | STK

**SPECIFICATION CODE**

CSS selection options only<sup>4</sup>

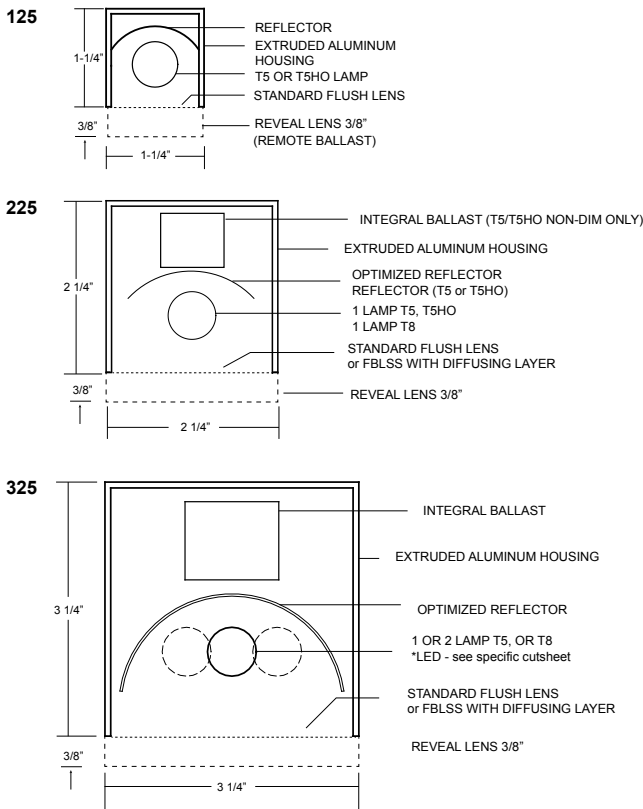
RAS only<sup>4</sup>

STK only<sup>4</sup>

model	lamp	length	finish	lens	voltage	ballast	mounting	orientation	standard cable length <sup>4</sup>	standard cord color	standard canopy	standard canopy finish	standard cover plate	cover plate finish	arm length	arm style	arm length	arm height	option
-------	------	--------	--------	------	---------	---------	----------	-------------	------------------------------------	---------------------	-----------------	------------------------	----------------------	--------------------	------------	-----------	------------	------------	--------

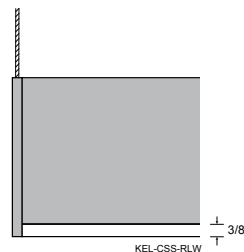
Model	Lamp Type	Nominal Length	Finish	Lens	Voltage	Ballast	Mounting	Options
<b>KEL-125</b> 1.25"	<b>T5</b> <b>T5HO</b> <sup>6</sup> <b>T8</b> <sup>1,2</sup>	2 - 2' 3 - 3' 4 - 4'	Anodized <b>SC</b> - Satin Clear	<b>FW</b> - Frosted White	<b>120</b> <b>277</b>	<b>EB</b> - Electronic (standard)	<b>CSS</b> - Cable Suspended (36" standard)	Orientation <sup>4</sup> Cable Length <sup>4</sup> Cord Color <sup>4</sup> Canopy <sup>4</sup> Canopy Finish <sup>5</sup>
<b>KEL-225</b> 2.25"		6 - 6' <sup>7</sup> 8 - 8' <sup>7</sup>	Powder Coat <b>MW</b> - Matte White <b>FB</b> - Flat Black <b>CUP</b> - Custom <sup>5</sup>	<b>RLW</b> - Reveal Frosted White 3/8" extended <b>FBLSS</b> <sup>1</sup> - Flat Blade Louver Semi-Specular		Dimming <sup>2</sup> <b>HL3</b> <sup>3</sup> - Hi-Lume 3D <b>ES</b> <sup>8</sup> - EcoSystem <b>ESH</b> - EcoSystem H-Series <b>0-10V</b> - 0-10V	<b>RAS</b> - Rotational Arm System <b>SM</b> - Surface Mount	Cover Plate/ Knuckle <sup>4</sup> Cover Finish <sup>5</sup> Arm Length <sup>4</sup>
<b>KEL-325-1</b> 3.25" 1 lamp in cross section			<b>CR</b> <sup>3,7</sup> Continuous Run <b>MTR-R</b> <sup>9</sup> Miter Run				<b>STK1</b> - Stack Mount Single side arm mount <b>STK2</b> - Stack Mount Double side arm mount	Arm Style <sup>4</sup> Arm Length <sup>4</sup> Arm Height <sup>4</sup> Custom Finish <sup>5</sup>
<b>KEL-325-2</b> 3.25" 2 lamps in cross section								<b>EM</b> - Emergency Battery Pack <b>TB</b> - Cable Tie Back

**Dimensions**



**NOTES**

- not available for 125
- remote ballast for 225
- specify length in nominal feet,
- see KELSEY option sheet for selections
- contact factory for custom finish
- (2) T5HO lamps not available on lensed fixture
- staggered lamping standard on 325 6" and longer
- for CSS with ES or HL3 option, ballast is wired at factory for 3-wire control for digital dimming control (E1/E2), consult factory
- see [miter worksheet](#) for specification (detailed drawing required)



# KELSEY

1.25", 2.25", 3.25"

Square Linear Fluorescent

CSS | RAS | SM | STK - Options Page

## RAS Options

### Cover Plate/ Knuckle/Trim Ring

- 4CP - R 4" Cover Plate with 1.25" Knuckle (std)
- 4CP - R2 4" Cover Plate with 2.25" Knuckle
- 4CP - R3 4" Cover Plate with 3.25" Knuckle
- 1TR - R 1 1/4" Trim Ring with 1.25" knuckle
- 1TR - R2 1 1/4" Trim Ring with 2.25" knuckle
- 1TR - R3 1 1/4" Trim Ring with 3.25" knuckle

### Cover Plate Finish

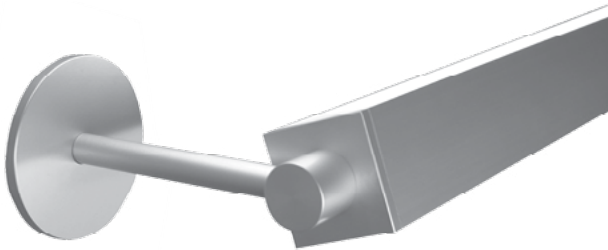
- SC - Satin Clear (standard)
- MW - Matte White
- FB - Flat Black
- CUP - Custom Powder Coat

Max arm lengths without additional support  
\*For lengths longer than max, Specify "TB" in option section for aircraft cable tie back.

	4'	6'	8'
125	18"	12"	12"
225	18"	12"	9"
325	12"	9"	6"

### Arm Length

- 6 - 6" (standard)
- 9 - 9"
- 12 - 12"
- 18 - 18"
- CUL - Custom (specify length in inches ex: CUL28)

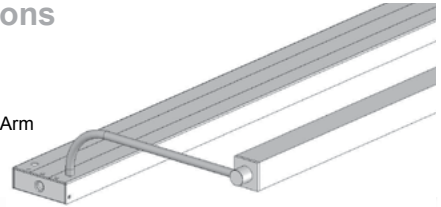


KELSEY 225 RAS

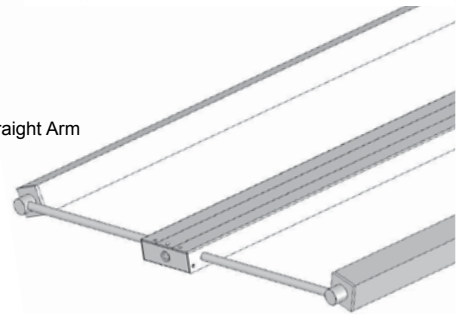
**NOTE**  
Cover plate, knuckles, and arm match housing finish

## Stack Options

**STK1-BA**  
Single Stack Bent Arm



**STK2-SA**  
Double Stack Straight Arm

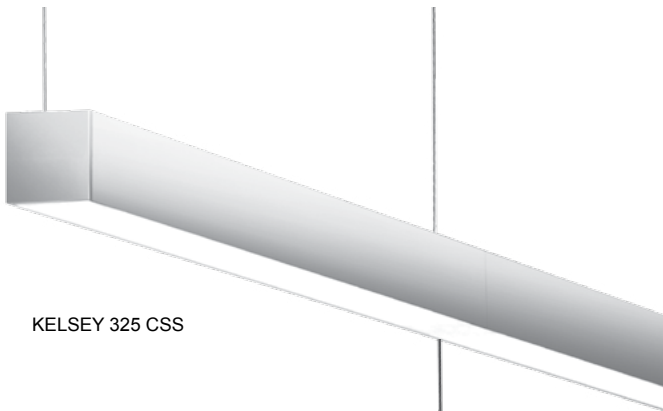


**Arm Style**  
SA - Straight Arm  
BA - Bent Arm  
CA - Custom (supply drawing)

**Arm Length**  
6 - 6"  
9 - 9"  
12 - 12"  
18 - 18"  
CUL - Custom (specify length in inches ex: CUL28)

**Bent Arm Height**  
6" (standard)  
CUH - Custom Height (specify length in inches ex: CUH28)

**NOTE**  
knuckles and arm match housing finish  
stack housing standard is silver powder coat finish



KELSEY 325 CSS



KELSEY 225 CSS-R

## CSS Options

### Orientation

- DR - Direct
- IN - Indirect
- R - Rotational with 1.25" knuckle<sup>1</sup>
- R2 - Rotational with 2.25" knuckle<sup>1</sup>
- R3 - Rotational with 3.25" knuckle<sup>1</sup>

### Cable Length Options

- 36 - 36" (standard)
- 72 - 72"
- 120 - 120"

### Power Cord Color Options

- W - White
- B - Black
- G - Gray (standard)

### Canopy Options

- STND - Bracket bar w/5" round canopy
- NC - No canopy 1/4-20 side exit cable gripper (1/4-20 stud provided by others)
- CU - Custom (contact factory)

### Canopy Finish Options

- MW - Matte White
- SMT - Silver Matte Texture
- CUP - Custom (contact factory)

**NOTE**  
1 knuckles match housing finish

# KELSEY

1.25", 2.25", 3.25"

Square Linear Fluorescent

www.birchwoodlighting.com

Type:

Job Name:



KELSEY 225 CSS