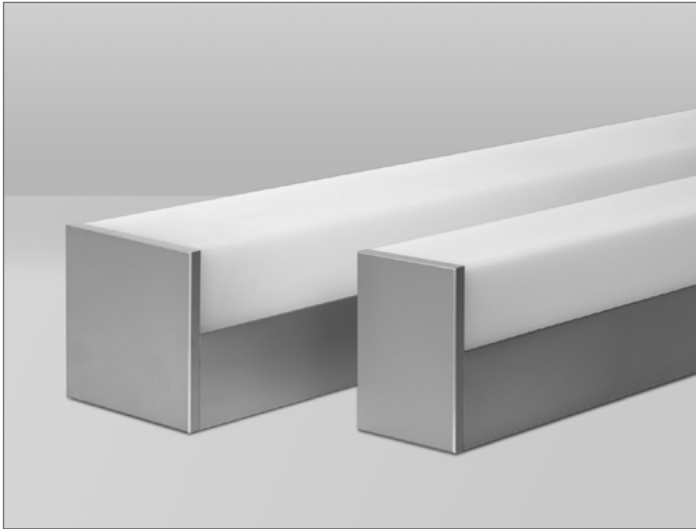


NOLAN

2.25", 3.25"
T5/T5HO/T8

Cable Suspended | Surface



325/225



325-CSS-DR



225-TDW-SM



SM-INS

With its 2.25" or 3.25" wide linear profile, NOLAN provides specification grade design and luminance to the refined architectural market.

Featuring our highest quality 1/4" machined aluminum end-caps and heavy gauge housing, NOLAN is handcrafted to remain beautiful while still working hard. A variety of mounting configurations allows NOLAN the flexibility to be utilized in applications such as: offices, corridors, residential or retail establishments. Surface mounted, the low profile of NOLAN also meets ADA requirements.

The precision-edged extruded acrylic lens satisfies the design sophistication required by specifiers, yet also provides effortless removal and exact snap-in lens replacement every time, making NOLAN a dream to maintain.



UL and c-UL listed for dry and damp locations.



Made in the USA

FIXTURE SPECIFICATIONS

Construction

Heavy gauge extruded aluminum housing. 1/4" thick precision machined aluminum end-caps. Extruded acrylic lenses specifically engineered to maximize the performance and transmission from a variety of light sources.

Fixture Length

Fixtures are available in nominal lengths of 2, 3, 4, 6 and 8 feet. Continuous run mounting available featuring internal adjoining bracket and splines for a straight and precise installation. See options for details.

Finishes

(SC) Satin Clear anodize is standard. (MW) Matte White or (FB) Flat Black powder coat finishes optional. Custom finishes available - consult factory.

Lamping

Single T5, T5HO or T8 linear fluorescent lamps available in cross section. Integral ballast standard. Dimming and emergency battery pack options available. Consult factory for ballast availability and specifications.

Mounting

Field-adjustable 1/8" aircraft (CSS) Cable Suspension System for use with bracket bar, 5" round canopy and cable gripper device. 36" aircraft cable and (G) Gray power cord included as standard. Please specify (CSS-DR) Cable Suspended Direct or (SM) Surface Mount. Other cable lengths and power cord styles are available, see options guide or consult factory.

Acrylic Lens and Indirect Shield Options

(FW) Frosted White, (FT) Prismatic Sided Frosted White. (TDW) Teardrop shaped Frosted White and (INS) Indirect Shield in either silver, flat black or matte white powder coat finish.

Custom and Mods

We proudly specialize in manufacturing custom and modified luminaires and have the ability to modify most of our standard fixtures. Please contact factory with any inquiries.

www.birchwoodlighting.com

Type: Job Name:

Cable Suspended | Surface

SPECIFICATION CODE

CSS selections only³

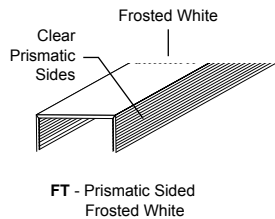
model	# of lamps	lamp type	length	finish	lens	voltage	ballast	mounting	standard cable length	standard cord color	standard canopy	standard canopy finish	options	options
-------	------------	-----------	--------	--------	------	---------	---------	----------	-----------------------	---------------------	-----------------	------------------------	---------	---------

Model	# of lamps ⁶ in cross section	Lamp Type	Nominal Length	Finish	Lens	Voltage	Ballast	Mounting	Options
NOL-225 - NOLAN 2.25" wide linear profile	1 - 1 lamp	T5 T5HO T8⁸	2 - 2'	Anodized	FW - Frosted White	120	EB - Electronic	CSS-DR - Cable Suspended Direct	CSS³ - Cable Length CSS³ - Power Cord Color CSS³ - Canopy CSS³ - Canopy Finish
			3 - 3'	SC - Satin Clear					
			4 - 4'						
			6 - 6' ⁴						
NOL-325 - NOLAN 3.25" wide linear profile			8 - 8' ⁴	Powder Coat	TDW¹⁰ - Teardrop Frosted White		HL3⁷ - Hi-Lume ES⁷ - EcoSystem ESH - EcoSystem H-Series	SM - Surface Mount	INS⁹ - Indirect Shield Silver INSM⁹ - Indirect Shield Matte White INSF⁹ - Indirect Shield Flat Black EM⁵ - Emergency Battery Pack
				MW - Matte White					
				White					
				FT⁹ - Prismatic Sided Frosted White					
		CR^{1,4} - Continuous Run		FB - Flat Black					
				CUP - Custom ²					

CSS Options

Cable Length	Power Cord Color	Canopy	Canopy Finish
36 - 36" (standard) 72 - 72" 120 - 120"	W - White B - Black G - Gray (standard)	STND - Bracket bar w/5" round canopy NC - No canopy 1/4-20 side exit cable gripper (1/4-20 stud provided by others) CU - Custom (contact factory)	MW - Matte White (standard) SL - Silver FB - Flat Black CUP - Custom (contact factory)

FT Lens Description (325 only)



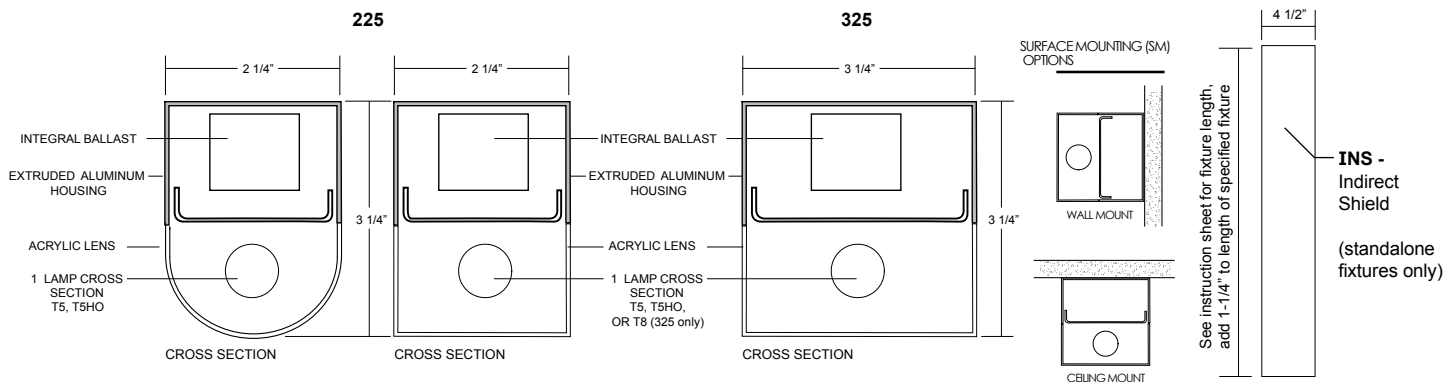
NOTES

- 1 specify length in nominal feet, see [CR matrix page](#)
- 2 contact factory for custom finish
- 3 see CSS options above for non-standard selections
- 4 staggered lamping for 6' and longer to reduce socket shadow, (325 only)
- 5 consult factory for EM options
- 6 consult factory for 2-lamp in cross section option, (325 only)
- 7 for CSS with ES or HL3 option, ballast is wired at factory for 3-wire control for digital dimming control (E1/E2), consult factory
- 8 325 only
- 9 standalone fixtures only
- 10 225 only, not available with INS option

*see [instruction sheet](#) for more information

**see [option sheet](#) for details

Dimensions



V-0516