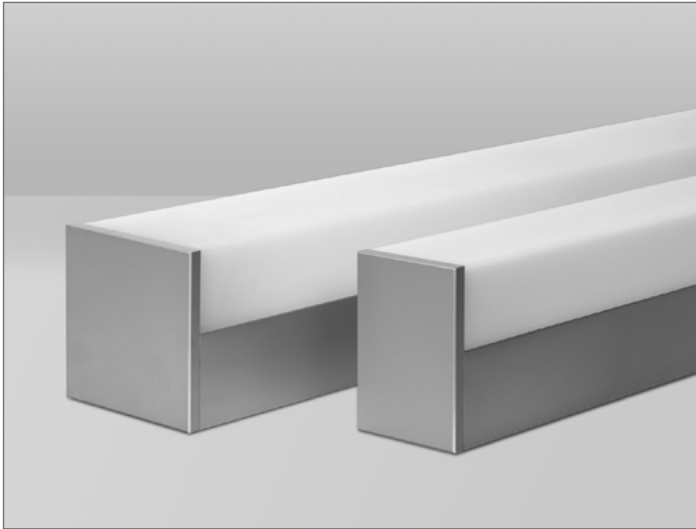


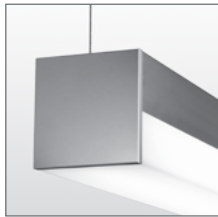
# NOLAN LED

2.25", 3.25" Profile

Cable Suspended | Surface



325/225



CSS-DR



225-TDW-SM



SM-INS

With its 2.25" and 3.25" wide linear profile, NOLAN provides specification grade design and luminance to the refined architectural market.

Featuring our highest quality 1/4" machined aluminum end-caps and heavy gauge housing, NOLAN is handcrafted to remain beautiful while still working hard. A variety of mounting configurations allows NOLAN the flexibility to be utilized in applications such as: offices, corridors, residential or retail establishments. Surface mounted, the low profile of NOLAN also meets ADA requirements.

The precision-edged extruded acrylic lens satisfies the design sophistication required by specifiers, yet also provides effortless removal and exact snap-in lens replacement every time, making NOLAN a dream to maintain.



UL and c-UL listed for dry and damp locations.



Made in the USA

## FIXTURE SPECIFICATIONS

### Construction

Heavy gauge extruded aluminum housing. 1/4" thick precision machined aluminum end-caps. Extruded acrylic lenses specifically engineered to maximize the performance and transmission from a variety of light sources.

### Fixture Length

Fixtures are available in nominal lengths of 2, 3, 4, 6 and 8 feet. Continuous run mounting available featuring internal adjoining bracket and splines for a straight and precise installation. See options for details.

### Finishes

(SC) Satin Clear anodize is standard. (MW) Matte White or (FB) Flat Black powder coat finishes optional. Custom finishes available - consult factory.

### LED Light Engine System

LED Light Engines are available as HLO (High Lumen Output) and SLO (Standard Lumen Output) providing efficient illumination. CLO (Custom Lumen Output) allows for end user specified lumen output or tailored wattage consumption for certain models. Consult factory for details.

### Dimming

Dimming is available with a variety of control protocols and options. Consult factory for availability and specifications.

### Acrylic Lens and Indirect Shield Options

(FW) Frosted White, (TDW) Teardrop shaped Frosted White and (FT) Prismatic Sided Frosted White. (INS) Indirect Shield in either flat black, silver or matte white powder coat finish.

### Mounting

Field-adjustable 1/8" aircraft (CSS) Cable Suspension System for use with bracket bar, 5" round canopy and cable gripper device. 3/6" aircraft cable and (G) Gray power cord included as standard. Please specify (CSS-DR) Cable Suspended Direct or (SM) Surface Mount. Other cable lengths and power cord styles are available, see options guide or consult factory.

### Custom and Mods

We proudly specialize in manufacturing custom and modified luminaires and have the ability to modify most of our standard fixtures. Please contact factory with any inquiries.

www.birchwoodlighting.com

Type: \_\_\_\_\_ Job Name: \_\_\_\_\_

Cable Suspended | Surface

### SPECIFICATION CODE

CSS selections only<sup>3</sup>

model	light engine	color temp	length	finish	lens	voltage	driver	mounting	standard cable length	standard cord color	standard canopy	standard canopy finish	options	options
<b>Model</b>	<b>Light Engine</b>	<b>Color Temp</b>	<b>Nominal Length</b>	<b>Finish</b>	<b>Lens</b>	<b>Voltage</b>	<b>Driver</b>	<b>Mounting</b>					<b>Options</b>	<b>Options</b>
<b>NOL-LED-225</b> NOLAN 2.25" wide linear profile	<b>SLO</b> - Standard Lumen Output	<b>27</b> - 2700K <b>30</b> - 3000K <b>35</b> - 3500K	<b>2</b> - 2' <b>3</b> - 3' <b>4</b> - 4' <b>6</b> - 6' <b>8</b> - 8'	<b>Anodized</b> <b>SC</b> - Satin Clear	<b>FW</b> - Frosted White <b>TDW</b> <sup>9</sup> - Teardrop Frosted White	<b>120</b> <b>277</b> <b>347</b> <sup>6</sup>	<b>EB</b> - Electronic (standard) <b>Dimming</b> <b>D1</b> - 1% (nom) 0-10V <b>D10</b> - 10% 0-10V <b>HLA2</b> <sup>7</sup> - Lutron 2 wire <b>HLA3</b> - Lutron 3 wire <b>HLH</b> - Lutron H EcoSystem <b>HL5</b> - Lutron 5 series EcoSystem <b>DALI</b> - DALI	<b>CSS-DR</b> - Cable Suspended Direct <b>SM</b> - Surface Mount					<b>CSS</b> <sup>3</sup> - Cable Length <b>CSS</b> <sup>3</sup> - Power Cord Color <b>CSS</b> <sup>3</sup> - Canopy <b>CSS</b> <sup>3</sup> - Canopy Finish	
<b>NOL-LED-325</b> NOLAN 3.25" wide linear profile	<b>Lumen Output</b> <b>CLO</b> <sup>6</sup> - Custom Lumen Output	<b>40</b> - 4000K	<b>CR</b> <sub>1</sub> Continuous Run	<b>Powder Coat</b> <b>MW</b> - Matte White <b>FB</b> - Flat Black <b>CUP</b> - Custom <sup>2</sup>	<b>FT</b> <sup>8</sup> - Prismatic Sided Frosted White		<b>INS</b> <sup>5</sup> - Indirect Shield Silver <b>INSM</b> <sup>5</sup> - Indirect Shield Matte White <b>INSF</b> <sup>5</sup> - Indirect Shield Flat Black <b>EM</b> <sup>4</sup> - Emergency Battery Pack							

[CLO Calculator](#)

### CSS Options

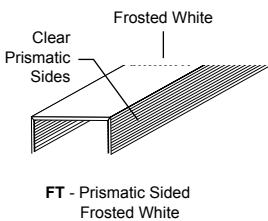
Cable Length	Power Cord Color	Canopy	Canopy Finish
<b>36</b> - 36" (standard) <b>72</b> - 72" <b>120</b> - 120"	<b>W</b> - White <b>B</b> - Black <b>G</b> - Gray (standard)	<b>STND</b> - Bracket bar w/5" round canopy <b>NC</b> - No canopy 1/4-20 side exit cable gripper (1/4-20 stud provided by others) <b>CU</b> - Custom (contact factory)	<b>MW</b> - Matte White <b>SMT</b> - Silver Matte Texture <b>FB</b> - Flat Black <b>CUP</b> - Custom (contact factory)

### NOTES

- 1 specify length in nominal feet, see [CR matrix sheet](#)
- 2 contact factory for custom finish
- 3 see CSS options above for non-standard selections
- 4 consult factory for EM options, remote only for 225
- 5 standalone fixtures only
- 6 available for EB, D1, D10 drivers only
- 7 120V only
- 8 325 only
- 9 225 only, not available with INS option

\*see [instruction sheet](#) for more information  
\*\*see [option sheet](#) for details

### FT Lens Description (325 only)



### LED

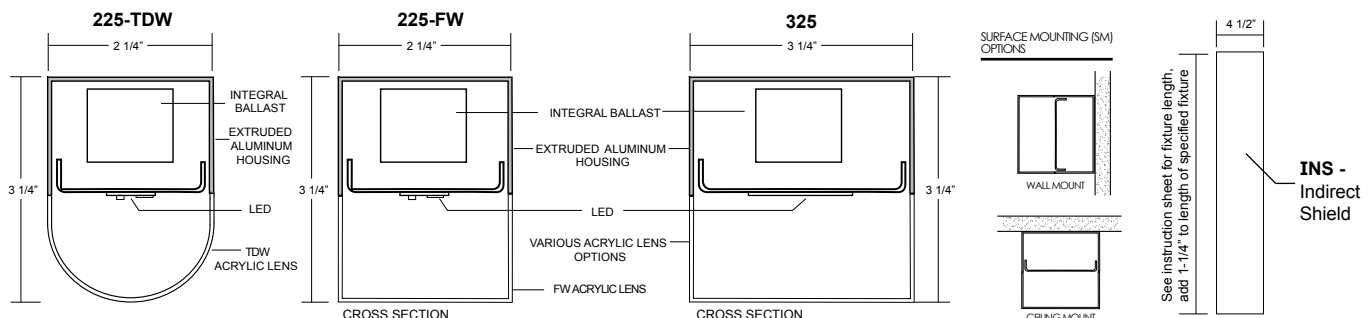
#### 225 (4000K FW lens)

**SLO** - 120.4 lm/watt delivered @ 2.9 w/ft fixture input watts, 349 lm/ft.  
**HLO** - 118.2 lm/watt delivered @ 5.9 w/ft fixture input watts, 698 lm/ft.  
**CLO** - refer to [CLO Calculator](#)  
225 LED [supplement info](#)

#### 325 (4000K FW lens)

**SLO** - 112.8 lm/watt delivered @ 4.4 w/ft fixture input watts, 497 lm/ft.  
**HLO** - 106 lm/watt delivered @ 9 w/ft fixture input watts, 955 lm/ft.  
**CLO** - refer to [CLO Calculator](#)  
325 LED [supplement info](#)

### Dimensions



V-0417