



JAKE LED 325



10 DAYS
200' total

SPECIFICATION CODE

JAK-LED-325-QS

model trim style light engine color temp length lens voltage driver options options

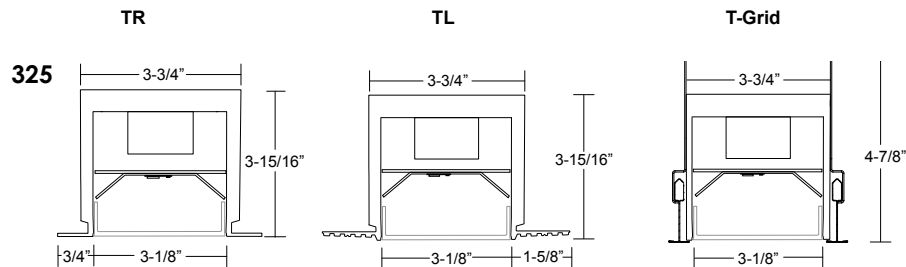
Model	Trim Style ²	Light Engine	Color Temp	Nominal Length	Lens	Voltage	Driver	Options
JAK-LED-325-QS 3.25" profile	TR - 3/4" flange	SLO - Standard Lumen Output	30 - 3000K	4 - 4'	FW	120	EB - Electronic (standard)	Finishes FB - Flat Black MW - Matte White
		HLO - High Lumen Output	35 - 3500K 40 - 4000K	8 - 8'				
	TL - Trimless Mud-over flange	CLO ¹ - Custom Lumen Output		Continuous Run				Dimming 0-10V
	T-Grid Ceilings			CR12 - 12'				D1 - 1% (nom)
	LT9 - 9/16" exposed lay-in			CR16 - 16'				D10 - 10%
	LT15 -15/16" exposed lay-in			CR20 - 20'				HLA2 ³ - Lutron 2 wire
	TT9 -9/16" Tegular			CR24 - 24'				HLA3 - Lutron 3 wire
	TT15 -15/16" Tegular							HLH - Lutron H series
	ITA - Interlude® 9/16"							
	ST9 - Slot Grid 9/16"							

[CLO Calculator](#)



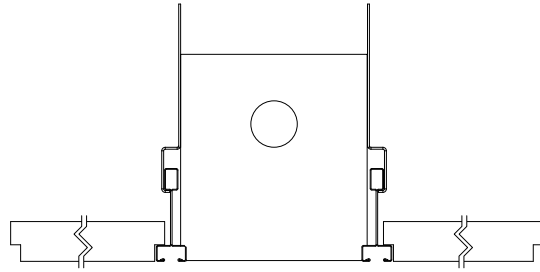
- 1 refer to CLO Calculator below for code selection
- 2 Satin Clear for TR, T-Grid Matte White standard, TL is Mill Finish
- 3 120V only

Dimensions

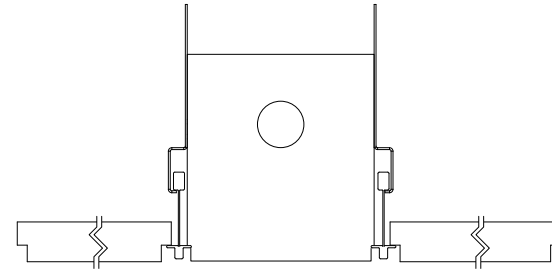


T-GRID TRIM STYLES

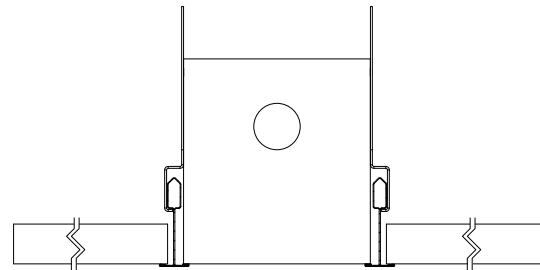
ST9 - 9/16 SLOT GRID



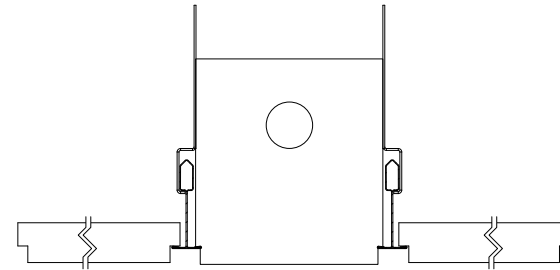
ITA - Interlude



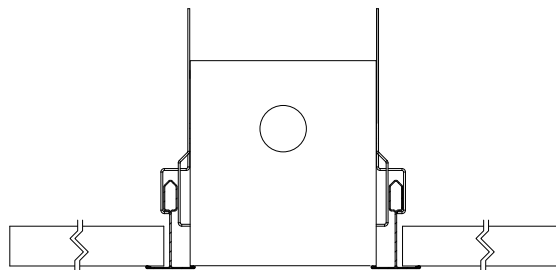
LT9 - 9/16 LAY-IN



TT9 - 9/16 TEGULAR



LT15 - 15/16 LAY-IN



TT15 - 15/16 TEGULAR

