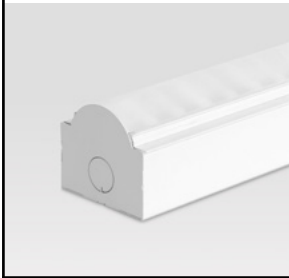




**WP LED**



**3 DAYS**

100 pcs. or  
400' total

**SPECIFICATION CODE**

**WP-LED-S-QS**

model                      light engine                      color temp                      length                      voltage                      driver

Model	Light Engine	Color Temp	Nominal Length	Voltage	Driver
<b>WP-LED-S-QS</b>	<b>SLO</b> - Standard	<b>30</b> - 3000K	<b>4</b> - 4'	<b>120</b>	<b>EB</b> -
Standard	Lumen Output	<b>35</b> - 3500K	<b>8</b> - 8'	<b>277</b>	Electronic
(integral driver)	<b>HLO</b> - High	<b>40</b> - 4000K	Continuous Run		(standard)
	Lumen Output		<b>CR12</b> - 12'		Dimming 0-10V
	<b>CLO</b> <sup>1</sup> - Custom		<b>CR16</b> - 16'		<b>D1</b> - 1% (nom)
	Lumen Output		<b>CR20</b> - 20'		<b>D10</b> - 10%
			<b>CR24</b> - 24'		<b>HLA2</b> <sup>2</sup> - Lutron 2 wire
					<b>HLA3</b> - Lutron 3 wire
					<b>HLH</b> - Lutron H series

[CLO Calculator](#)



1 refer to CLO Calculator for code selection  
2 120V only

**Dimensions**

