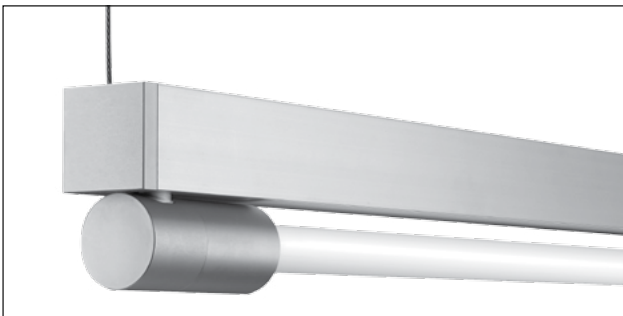


RB - Remote Ballast



IB - Integral Ballast

The TORi linear fluorescent luminaire combines design versatility and elegance within a sleek minimalist profile. Precision engineered components create almost seamless continuous runs, while multiple diffuser options provide beautiful over-all illumination. Integral and remote ballast options accommodate single T5 or T5HO lampping. TORi inspires endless possibilities for any design application.



LCA




AAR



ISCRP



TFSA

 UL and c-UL listed for dry and damp locations.



Made in the USA

## FIXTURE SPECIFICATIONS

### Construction

Fixture body, end caps and integral ballast housing are constructed of anodized aluminum. Fixtures available in nominal lengths of 2, 3, 4, 6 and 8 foot sections for (IB) Integral Ballast. Fixtures can be continuous run mounted. Curved lenses (optional) are 3/32" thick frosted acrylic. Reflectors (optional) constructed of die-formed aluminum.

### Lamping and Ballast

Single T5 or T5HO linear fluorescent lamps. (IB) Integral electronic ballast standard. (EM) Emergency battery pack or Dimming optional. Consult factory for dimming, ballast and emergency battery pack availability.

### Finishes

(SC) Satin Clear anodize is standard. Standard canopy finish is (MW) Matte White powder coat paint unless otherwise specified. Other custom powder coat finishes available, see options guide or consult factory.

### Mounting

Field-adjustable aircraft (CSS) Cable Suspension System for use with bracket bar, 5" round canopy and cable gripper device. 3/16" aircraft cable and (G) Gray power cord included as standard. Also suitable as (SM) Surface Mount fixture with (IB), (SSM) Suspended Surface Mount with (RB) or (AM) Arm Mount with machined aluminum arm. Other cable lengths and power cord styles are available, see options guide or consult factory.

### Options

Acrylic lenses: (AT) Acrylic Tube, (LCA) Lower Curved Acrylic, (TFSA) TF Side Acrylics. Specify lens preference, see guide for selection. Reflectors: all available as solid or perforated (ISR) Indirect Symmetric, (AAR) Adjustable Asymmetric, (MRR) Mini Rotational. Power Cords: (G) Gray, (W) White, (B) Black. Canopies: See options guide for color finish selection.

### Custom and Mods

We proudly specialize in manufacturing custom and modified luminaires and have the ability to modify most of our standard fixtures. Please contact factory with any inquiries.

www.birchwoodlighting.com

Type: \_\_\_\_\_ Job Name: \_\_\_\_\_

Cable Suspended | Surface

**SPECIFICATION CODE**

CSS / SSM selections only

ARM selections only

Lens / Reflector Options

model lamp length voltage ballast finish mounting

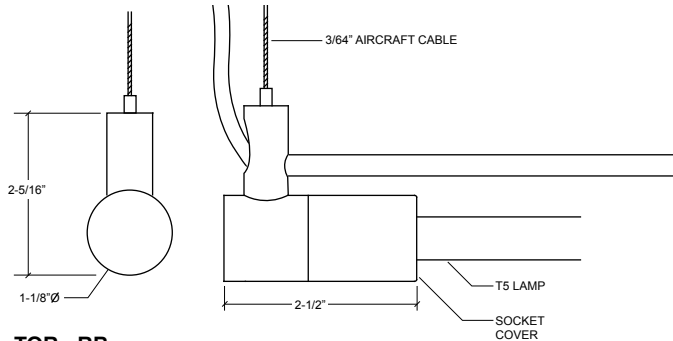
standard cable length	standard cord color	standard canopy	standard canopy finish
-----------------------	---------------------	-----------------	------------------------

arm length	cover plate	cover finish
------------	-------------	--------------

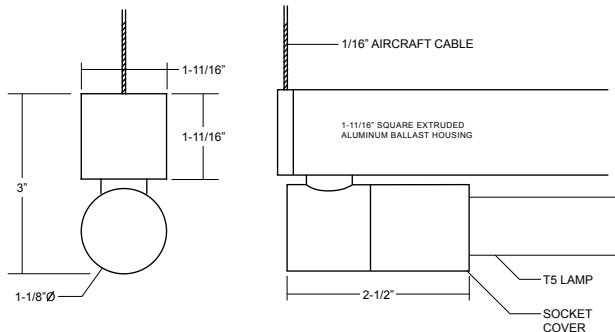
lens or reflector	finish	option
-------------------	--------	--------

Model	Lamp Type	Nominal Length	Voltage	Ballast	Finish	Mounting	Options
<b>TOR-RB</b> Remote Ballast	<b>T5</b> <b>T5HO</b> <sup>5</sup>	2 - 2'	120	<b>EB</b> - Electronic (standard)	<b>SC</b> - Satin Clear <b>CUP</b> - Custom <sup>2</sup>	<b>CSS</b> - Cable Suspended	<b>CSS</b> <sup>3</sup> - Cable Length <b>CSS</b> <sup>3</sup> - Power Cord Color <b>CSS</b> <sup>3</sup> - Canopy <b>CSS</b> <sup>3</sup> - Canopy Finish
		3 - 3'	277				
		4 - 4'					
<b>TOR-IB</b> Integral Ballast		6 - 6'		Dimming <sup>4</sup> <b>HL3</b> <sup>9</sup> - Hi-Lume 3D		<b>SM</b> - Surface Mount (Internal Ballast Only)	<b>ARM</b> <sup>3</sup> - Arm Length <sup>3</sup> <b>CP</b> <sup>8</sup> - Cover Plate <sup>8</sup> <b>CP</b> <sup>8</sup> - Cover Plate Finish <sup>8</sup>
		6 - 6'					
		8 - 8'					
		<b>CR</b> <sup>1</sup> Continuous Run					
				<b>ES</b> <sup>9</sup> - EcoSystem		<b>SSM</b> - Suspended Surface Mount	
				<b>ESH</b> - EcoSystem H-Series		<b>AM</b> - Arm Mount	Acrylic Lens Reflector Options
				<b>0-10V</b> - 0-10V			<b>EM</b> <sup>7</sup> - Emergency Battery Pack

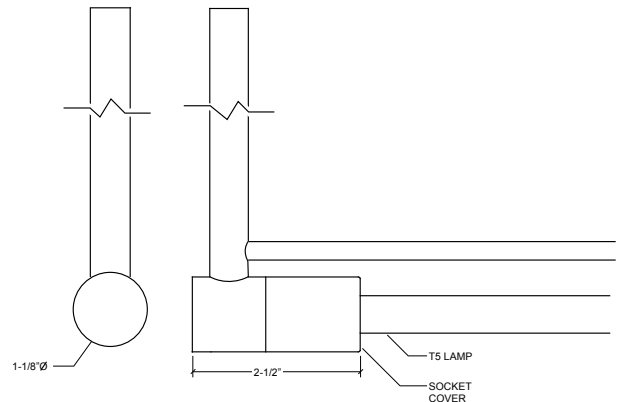
**Dimensions -RB**



**TOR - RB**



**TOR - IB**



**TOR - RB - AM**

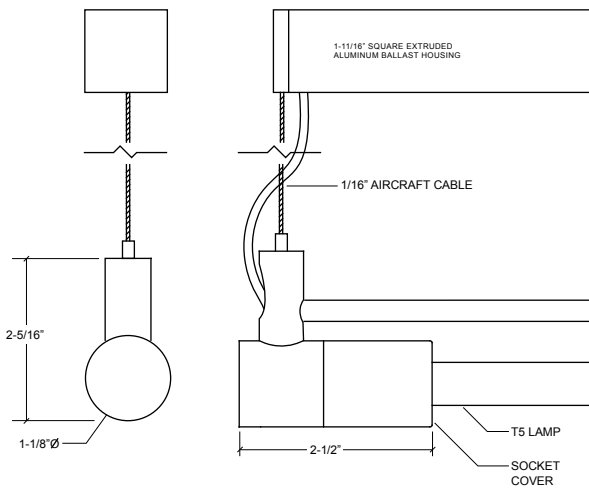
**NOTES**

- 1 specify length in nominal feet, see [CR matrix page](#)
- 2 contact factory for custom finish
- 3 see options page for non-standard selections
- 4 consult factory on (RB) dimming ballasts due to lead length restrictions
- 5 not available with AT-FC or AT-FW
- 6 IB only, 6' are made up of (2) 3' lamps  
8' are made up of (2) 4' lamps
- 7 consult factory for EM options
- 8 specify for RB-AM option only
- 9 for CSS with ES or HL3 option, ballast is wired at factory for 3-wire control for digital dimming control (E1/E2), consult factory

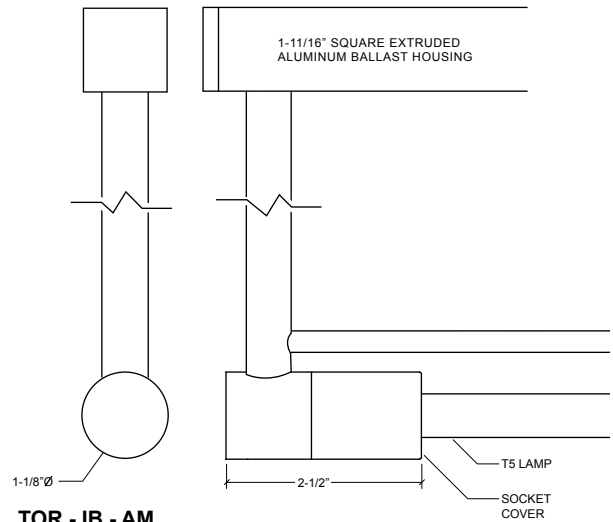
\*see [instruction sheet](#) for more information

\*\*see [option sheet](#) for more details

**Dimensions - IB**



**TOR - RB - SSM**



**TOR - IB - AM**

**Cable Length Options**

- 36 - 36" (standard)
- 72 - 72"
- 120 - 120"

**Power Cord Color Options**

- W** - White
- B** - Black
- G** - Gray (standard)

**Canopy**

- STND** - Bracket bar w/5" round canopy
- NC** - No canopy 1/4-20 side exit cable gripper (1/4-20 stud provided by others)
- CU** - Custom (contact factory)

**Canopy Finish Options**

- MW** - Matte White
- SMT** - Silver Matte Texture
- FB** - Flat Black
- CUP** - Custom (contact factory)

**Arm Mount Options**

- Arm Length**
- 6 - 6" (standard)
- 9 - 9"
- 12 - 12"
- 18 - 18"
- CUL** - Custom (specify length in inches ex: CUL28)

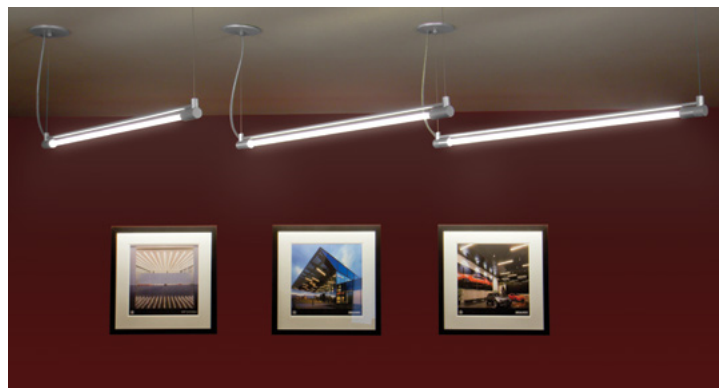
- Cover Plate**
- 4CP - 4" Cover Plate (standard)

- Cover Plate Color**
- SC - Satin Clear (standard)
- CUP - Custom Powder Coat

1TR - 1 1/4" Trim Ring

Note: Cover Plate not available for TOR-IB-AM option  
1TR requires access to back side of wall

**TOR - RB - CSS - 4CP**



www.birchwoodlighting.com

Type:

Job Name:

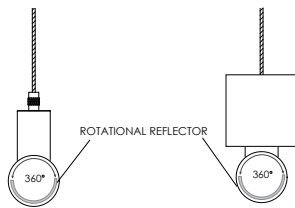
Options

**Reflector Options**

**Mini Rotational Reflector**

**MRSR-SC/MW**  
Mini Rotational Solid Reflector

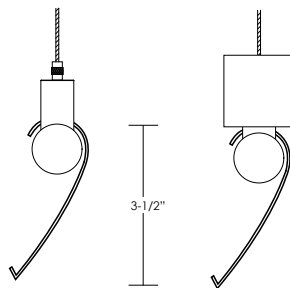
**MRPR-SC/MW**  
Mini Rotational Perforated Reflector



**Adjustable Asymmetric Reflector**

**SAAR-SC/MW**  
Solid Adjustable Asymmetric Reflector

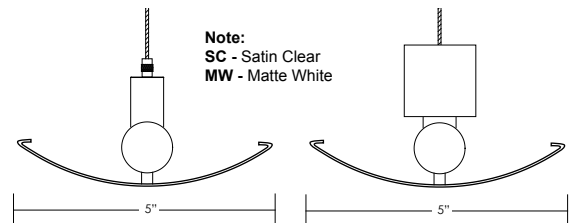
**PAAR-SC/MW**  
Perforated Adjustable Asymmetric Reflector



**Indirect Symmetric Reflector**

**ISCRS-SC/MW**  
Indirect Symmetric Curved Reflector Solid with white reflective liner

**ISCRP-SC/MW**  
Indirect Symmetric Curved Reflector Perforated

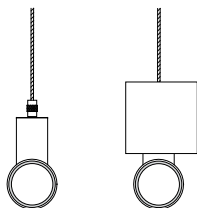


**Acrylic Lens Options**

**Acrylic Tube**

**AT-FC**  
Acrylic Tube Frosted Clear

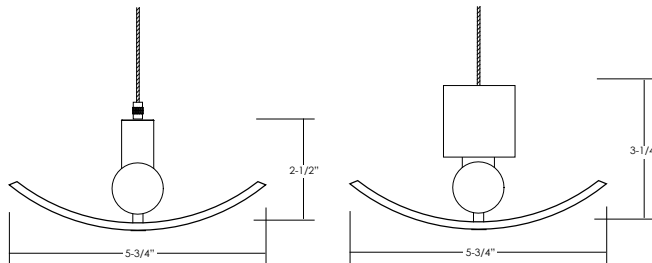
**AT-FW**  
Acrylic Tube Frosted White



**Lower Curved Acrylic**

**LCA-FC**  
Lower Curved Acrylic Frosted Clear

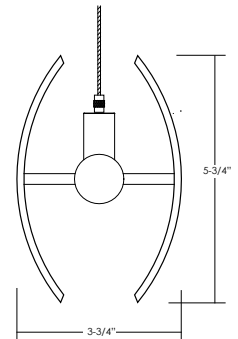
**LCA-FW**  
Lower Curved Acrylic Frosted White



**TF Side Acrylic**

**TFSA-FC**  
TF Side Acrylic Frosted Clear

**TFSA-FW**  
TF Side Acrylic Frosted White



**Note:**  
TF Side Acrylic Remote Ballast only