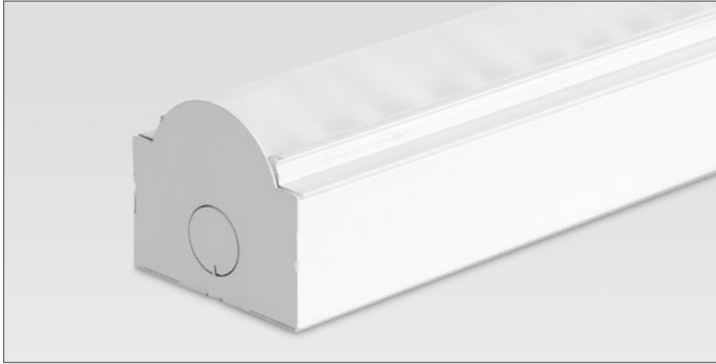


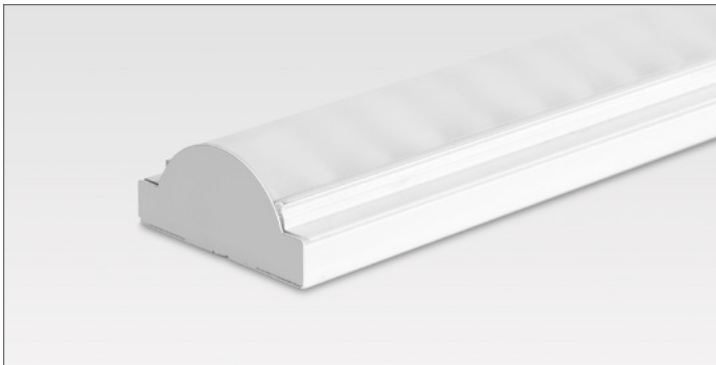
WP LED

Standard/Low Profile Strip
Distributed Array LED

Multi-Application Surface Mount



Standard




Low Profile

WP LED Specification Grade Strip fixtures are the perfect choice when less is best.

Whatever your specification requires, WP SYSTEM fixtures can deliver strong light while providing durability and value to any interior project: commercial, architectural, residential or retail.

Constructed of a die-formed heavy duty aluminum housing with post production powder coat and integral heat sink liner component. Extruded acrylic lens combined with dimming capabilities complete the make-up for one of our most popular and enduring product lines.

 UL and c-UL listed for dry and damp locations.



Made in the USA

FIXTURE SPECIFICATIONS

Construction

WP LED Standard and WP LED Low Profile are constructed of a die-formed heavy duty aluminum housing with post production powder coat and integral heat sink liner component. Lens is frosted clear extruded acrylic.

Finishes

Post-formed high-reflectivity white powder coat finish. Custom colors available - consult factory.

Mounting

Suitable for surface mounting in multiple applications. May be used in cove or soffit. Compatible for field thru-wiring. Optional 30T mounting clip with 30° tilt for both Standard and Low Profile fixtures.

LED Light Engine System

LED Light Engines are available as HLO (High Lumen Output) and SLO (Standard Lumen Output) providing efficient illumination. CLO (Custom Lumen Output) allows for end user specified lumen output or tailored wattage consumption for certain models. Consult factory for details.

Dimming

Dimming is available with a variety of control protocols and options. Consult factory for availability and specifications.

Fixture Length

Fixtures are available in nominal lengths of 2, 3 and 4 feet. Continuous run mounting and thru-wire compatibility.

Custom and Mods

We proudly specialize in manufacturing custom and modified luminaires and have the ability to modify most of our standard fixtures. Please contact factory with any inquiries.

www.birchwoodlighting.com

Type: Job Name:

Multi-Application Surface Mount

SPECIFICATION CODE

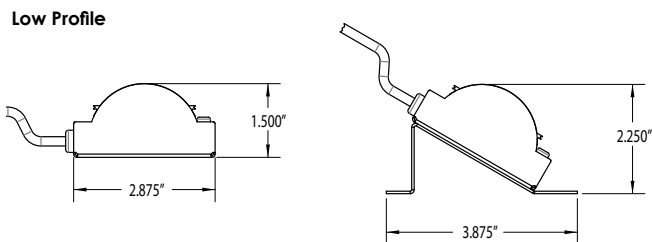
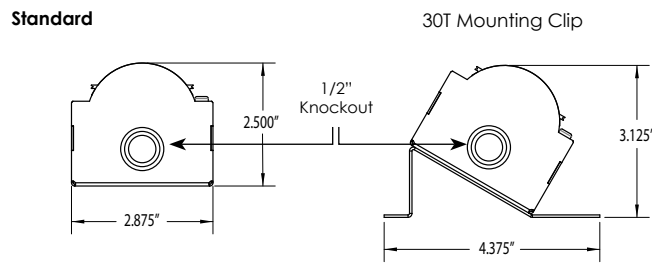
model	light engine	color temp	length	finish	voltage	driver	options	options
Model	Light Engine	Color Temp	Nominal Length	Finish	Voltage	Driver	Options	
WP-LED-S - Standard (integral driver)	SLO - Standard Lumen Output	27 - 2700K 30 - 3000K 35 - 3500K	2 - 2' 3 - 3' 4 - 4'	HRW - High Reflectivity White (standard) CUP - Custom Paint	120 277 347²	EB - Electronic (standard)	30T - Mounting Clip with 30° tilt	
WP-LED-LP - Low Profile (remote driver)	HLO - High Lumen Output CLO² - Custom Lumen Output CLO Calculator	40 - 4000K	6⁸ - 6' 8⁸ - 8' CR¹ - Continuous Run (runs are made up of 4' nominal fixtures unless otherwise specified)			Dimming D1 - 1% (nom) 0-10V D10 - 10% 0-10V HLA2⁴ - Lutron 2 wire HLA3 - Lutron 3 wire HLH - Lutron H EcoSystem HL5 - Lutron 5 series EcoSystem DALI - DALI	XFL³ - Specify Feed Length if longer than 9' EM⁷ - Emergency Battery Pack Sensors SEN_EX1^{5,6} - External Sensor SEN_EX2^{5,6} - External Sensor SEN_IN1^{5,6} - Internal Sensor SEN_IN2^{5,6} - Internal Sensor	

Nominal Length	Actual Length
	LED
2	23.250"
3	34.875"
4	46.500"
6	69.750"
8	93.000"

NOTES

- 1 specify length in actual feet
- 2 available for EB, D1, D10 drivers only
- 3 feed length on "Low Profile" is standard from the factory at 9' specify XFL" with length required, factory max length is 32' 4' 120 only
- 4 120 only
- 5 see [sensor supplement page](#) for detailed info
- 6 available for "S" standard model only
- 7 consult factory for EM options, "S" standard model only
- 8 6' and 8' fixtures are made up of (2) 3' or (2) 4' fixtures respectively

Dimensions



LED

WP LED (4000K FW lens)

SLO - 124.6 lm/watt delivered @ 4.4 w/ft consumed watts, 548 lm/ft.
HLO - 117.1 lm/watt delivered @ 9 w/ft consumed watts, 1054 lm/ft.
CLO - refer to [CLO Calculator](#)
 325 LED [supplement info](#)



WP-LED-S with Optional Sensor SEN_EX2