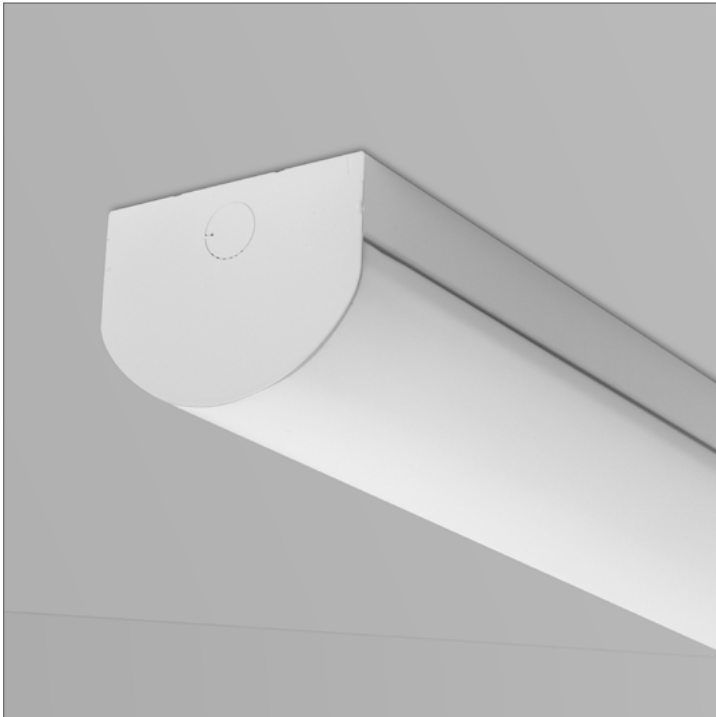


## WP LED

4.50

Specification Grade Strip LED


Multi-Application Surface Mount



WP LED Specification Grade Strip fixtures are the perfect choice when less is best.

Whatever your specification requires, WP SYSTEM fixtures can deliver strong light while providing durability and value to any project: commercial, industrial, architectural, residential or retail.

WP LED 450 is constructed of a die-formed heavy gauge steel housing with post production powder coat paint. Extruded acrylic lens fits cleanly edge-to-edge across the 4 ½" housing for a broad full width lens appeal. Combined with dimming capabilities, WP LED 450 provides a new look to one of our most popular and enduring product lines.

 UL and c-UL listed for dry and damp locations.



Made in the USA

## FIXTURE SPECIFICATIONS

### Construction

WP LED 450 is constructed of a die-formed heavy duty steel housing with post production powder coat paint. Integral driver with multiple knock-outs on back. Lens is frosted white extruded acrylic.

### Finishes

Post-formed high-reflectivity white powder coat finish. Custom colors available - consult factory.

### Mounting

Suitable for surface mounting in multiple applications. May be used in cove or soffit. Compatible for field thru-wiring.

### LED Light Engine System

LED Light Engines are available as HLO (High Lumen Output) and SLO (Standard Lumen Output) providing efficient illumination. CLO (Custom Lumen Output) allows for end user specified lumen output or tailored wattage consumption for certain models. Consult factory for details.

### Dimming

Dimming is available with a variety of control protocols and options. Consult factory for availability and specifications.

### Fixture Length

Fixtures are available in nominal lengths of 2, 4 or 8 feet. Continuous run mounting and thru-wire compatibility.

### Custom and Mods

We proudly specialize in manufacturing custom and modified luminaires and have the ability to modify most of our standard fixtures. Please contact factory with any inquiries.

www.birchwoodlighting.com

Type: \_\_\_\_\_ Job Name: \_\_\_\_\_

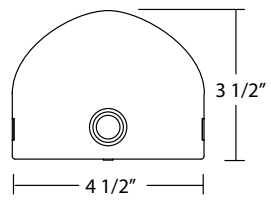
Multi-Application Surface Mount

**SPECIFICATION CODE**

**WP-LED-450**

Model	Light Engine	Color Temp	Nominal Length	Finish	Voltage	Driver	Options
<b>WP-LED-450</b> - (integral driver)	<b>SLO</b> - Standard Lumen Output	<b>30</b> - 3000K <b>35</b> - 3500K <b>40</b> - 4000K	<b>2</b> - 2' <b>4</b> - 4' <b>8</b> - 8'	<b>HRW</b> - High Reflectivity White (standard) <b>CUP</b> - Custom Paint	<b>120</b> <b>277</b> <b>347</b> <sup>3</sup>	<b>EB</b> - Electronic (standard)  Dimming <b>D1</b> - 1% (nom) 0-10V <b>D10</b> - 10% 0-10V <b>HLA2</b> <sup>4</sup> - Lutron 2 wire <b>HLA3</b> - Lutron A-series 3 wire <b>HLH</b> - Lutron H EcoSystem <b>HL5</b> - Lutron 5 series EcoSystem <b>DALI</b> - DALI	Sensors <b>SEN_EX1</b> <sup>5</sup> - External Sensor <b>SEN_EX2</b> <sup>5</sup> - External Sensor <b>SEN_IN1</b> <sup>5</sup> - Internal Sensor <b>SEN_IN2</b> <sup>5</sup> - Internal Sensor  <b>EM</b> <sup>6</sup> - Emergency Battery Pack
	<b>HLO</b> - High Lumen Output <b>CLO</b> <sup>1</sup> - Custom Lumen Output  <a href="#">CLO Calculator</a>		<b>CR</b> <sup>2</sup> - Continuous Run				

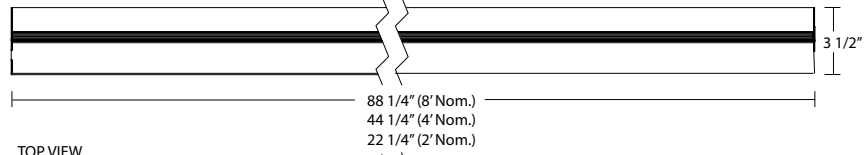
**Dimensions**



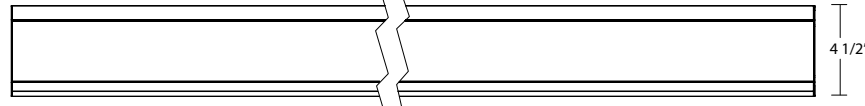
**NOTES**

- consult factory
- specify length in actual feet
- available for EB, D1, D10 drivers only
- 120V only
- see [sensor supplement page](#) for detailed info, consult factory for further options
- consult factory for EM options

**SIDE VIEW**



**TOP VIEW**



**LED**

**WP LED (4000K FW lens)**

**SLO** - 120.6 lm/watt delivered @ 4.5 w/ft consumed watts, 543 lm/ft.  
**HLO** - 109.6 lm/watt delivered @ 9.4 w/ft consumed watts, 1030 lm/ft.  
**CLO** - refer to [CLO Calculator](#)  
 450 LED [supplement info](#)



Optional Sensor SEN\_EX2 shown



Optional Sensor SEN\_IN1 shown