



QUICKSHIP

**10-Day Shipping On Select
Made To Order Products**



POLICIES

- Lead times are estimated and exclude weekends and holidays.
- Applies to standard orders only; does not apply to large-scale orders.
- Ships within 10 days after receiving a clean P.O.
- Revisions to purchase orders may affect lead times
- Available in 0-10V dimming in 120V-277V only

NOTE: Custom colors, lengths, or mitered angles are unavailable. Shop drawings or engineering requirements are excluded from the hot sheet program and may result in longer lead times. Please refer to the full product specification sheet for detailed descriptions. Specifications and dimensions are subject to change without notice—consult the factory for more details.

TABLE OF CONTENTS

PRODUCT COMPARISON OVERVIEW [PG > 04](#)

SUSPENDED/SURFACE

COLLIN 2.25"	PG > 06
COLLIN 3.25"	PG > 07
KELSEY 1.25"	PG > 08
KELSEY 2.25"	PG > 09
KELSEY 3.25"	PG > 10
NOLAN 2.25"	PG > 11
NOLAN 3.25"	PG > 12
HAILEY 1.25"	PG > 13
HAILEY 2.25"	PG > 14
HAILEY 3.25"	PG > 15





COVE

ASHLEY	PG > 15
--------	----------------------------





RECESSED

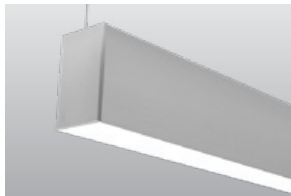
BW165R - 1.65" Recessed Flush	PG > 16
BW165R - 1.65" Regressed 1"	PG > 17
BW165R - 1.65" Perimeter Flush	PG > 18
BW165R - 1.65" Perimeter Regressed 3"	PG > 19
JAKE - 1.65" Recessed	PG > 20
JAKE - 2.25" Recessed	PG > 21
JAKE - 3.25" Recessed	PG > 22

QuickShip Product Comparison Overview

	PROFILE (IN)	PROFILE SHAPE	OUTPUT	OUTPUT TYPE	OPTICS & LENS TYPE	MOUNTING
SUSPENDED/SURFACE LINEAR						
 <p>COLLIN</p>	2.25 3.25	Rectangle	481-987 lm/ft	Direct/Indirect	Frosted White	Cable Suspended, Surface Mount
 <p>KELSEY</p>	1.25 2.25 3.25	Square	481-987 lm/ft	Direct	Frosted White	Cable Suspended, Surface Mount
 <p>NOLAN</p>	2.25 3.25	Square	314 -955 lm/ft	Direct	Frosted White	Cable Suspended, Surface Mount
 <p>HAILEY</p>	1.25 2.25 3.25	Circular	283-565 lm/ft	Direct	Frosted White	Cable Suspended

QuickShip Product Comparison Overview

	PROFILE (IN)	PROFILE SHAPE	OUTPUT	OUTPUT TYPE	OPTICS & LENS TYPE	MOUNTING
COVE / LEDGE						
 ASHLEY	7.00	Rectangle	510-980 lm/ft	Narrow Distribution, Wide Distribution	Standard, Diffuser/Refactor	Surface Mount
RECESSED LINEAR						
 BW Recessed	1.65	Rectangle	250-1000 lm/ft	Direct Flush or 1" Regressed	Harmonized Efficiency, Asymmetric, Frosted White or 2" Drop Lens	Recessed T-Grid, Gypsum Trim or Trimless
 BW Perimeter Recessed	1.65	Rectangle	250-1000 lm/ft	Direct Flush or 3" Regressed	Harmonized Efficiency, Asymmetric, Frosted White	Perimeter T-Grid, Gypsum Trim or Trimless
 JAKE	1.65 2.25 3.25 5.00	Square/ Rectangle	250-1000 lm/ft	Direct	Frosted White	Recessed, T-Grid or Perimeter

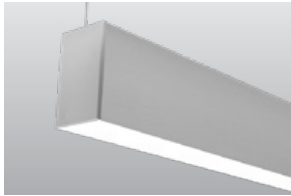


Collin LED 2.25" Direct/Indirect

Example: COL-LED-225-1DR-1IN-SLO-SLO-30-8-MW-FW-FW-120-D1-CSS

CATALOG NUMBER	DESCRIPTION
COL-LED-225	2.25" Direct / Indirect
LIGHT CONFIGURATION	
-1DR-1IN	Direct / Indirect
-1DR-0IN	Direct / Non Lit Indirect
LIGHT OUTPUT - DIRECT	
-SLO	Standard Lumen Output
-HLO	High Lumen Output
LIGHT OUTPUT - INDIRECT:	
blank	Non-Lit Indirect
-SLO	Standard Lumen Output
-HLO	High Lumen Output
CCT/CRI	
-30	3000K / 80CRI
-35	3500K / 80CRI
NOMINAL LENGTH	
-2	2ft
-3	3ft
-4	4ft
-6	6ft
-8	8ft
-CR_	Continuous Run - Note length in feet
FIXTURE FINISH	
-MW	Matte White, Powder Coat
LENS / OPTICS - DIRECT	
-FW	Frosted White Lens
LENS / OPTICS - INDIRECT	
blank	Non-Lit Indirect
-FW	Frosted White Lens
VOLTAGE	
-120	120V
-277	277V
DIMMING	
-D1	0-10V Dimming 1%
MOUNTING	
-CSS	Cable Suspended (See Cable Suspended Configurations Below)
CABLE LENGTH:	
-36	36"
POWER CORD COLOR:	
-W	White Cord
-G	Gray Cord
-B	Black Cord
CANOPY OPTIONS:	
-STND	Bracket Bar With 5" Round Canopy
-NC	No Canopy 1/4-20 Side Exit Cable Gripper
CANOPY FINISH:	
-MW	Matte White
-FB	Flat Black

Click or scan for the spec sheet, or visit our website for the latest specification information.

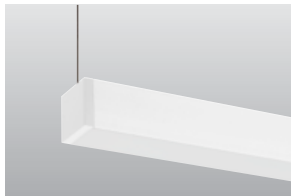


Collin LED 3.25" Direct/Indirect

Example: COL-LED-325-1DR-1IN-SLO-SLO-30-8-MW-FW-FW-120-D1-CSS

CATALOG NUMBER	DESCRIPTION
COL-LED-325	3.25" Direct / Indirect
LIGHT CONFIGURATION	
-1DR-1IN	Direct / Indirect
-1DR-0IN	Direct / Non Lit Indirect
LIGHT OUTPUT - DIRECT	
-SLO	Standard Lumen Output
-HLO	High Lumen Output
LIGHT OUTPUT - INDIRECT:	
blank	Non-Lit Indirect
-SLO	Standard Lumen Output
-HLO	High Lumen Output
CCT/CRI	
-30	3000K / 80CRI
-35	3500K / 80CRI
NOMINAL LENGTH	
-2	2ft
-3	3ft
-4	4ft
-6	6ft
-8	8ft
-CR_	Continuous Run - Note length in feet
FIXTURE FINISH	
-MW	Matte White, Powder Coat
LENS / OPTICS - DIRECT	
-FW	Frosted White Lens
LENS / OPTICS - INDIRECT	
blank	Non-Lit Indirect
-FW	Frosted White Lens
VOLTAGE	
-120	120V
-277	277V
DIMMING	
-D1	0-10V Dimming 1%
MOUNTING	
-CSS	Cable Suspended (See Cable Suspended Configurations Below)
-WM	Wall Mount
CABLE LENGTH:	
-36	36"
POWER CORD COLOR:	
-W	White Cord
-G	Gray Cord
-B	Black Cord
CANOPY OPTIONS:	
-STND	Bracket Bar With 5" Round Canopy
-NC	No Canopy 1/4-20 Side Exit Cable Gripper
CANOPY FINISH:	
-MW	Matte White
-FB	Flat Black

Click or scan for the spec sheet, or visit our website for the latest specification information.

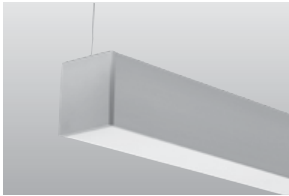


KELSEY LED 1.25" Square Architectural

Example: KEL-LED-125-SLO-30-8-MW-FW-120-CSS-DR-36MW

	CATALOG NUMBER	DESCRIPTION
	KEL-LED-125	1.25" Square Architectural with Remote Driver
LIGHT OUTPUT	-SLO	Standard Lumen Output
	-HLO	High Lumen Output
CCT/CRI	-30	3000K / 80CRI
	-35	3500K / 80CRI
NOMINAL LENGTH	-2	2ft
	-3	3ft
	-4	4ft
	-6	6ft
	-8	8ft
	-CR_	Continuous Run - Note length in feet
FIXTURE FINISH	-MW	Matte White, Powder Coat
LENS / OPTICS	-FW	Frosted White Lens
VOLTAGE	-120	120V
	-277	277V
DIMMING	-D1	0-10V Dimming 1%
MOUNTING OPTIONS	-SM	Surface Mount
	-CSS-DR	Cable Suspended - Direct
	-CSS-IN	Cable Suspended - indirect
CANOPY/CABLE LENGTH	-36MW	5" Round Matte White Canopy, 36" Aircraft Cable
	-36FB	5" Round Flat Black Canopy, 36" Aircraft Cable
	-36MS	5" Round Matte Silver Canopy, 36" Aircraft Cable

Click or scan for the spec sheet, or visit our website for the latest specification information.

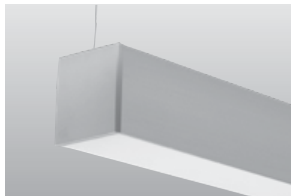


KELSEY LED 2.25" Square Architectural

Example: KEL-LED-225-IB-SLO-30-8-MW-FW-120-CSS-DR-36MW

CATALOG NUMBER	DESCRIPTION
KEL-LED-225-IB	2.25" Square Architectural with Integral Driver
LIGHT OUTPUT	
-SLO	Standard Lumen Output
-HLO	High Lumen Output
CCT/CRI	
-30	3000K / 80CRI
-35	3500K / 80CRI
NOMINAL LENGTH	
-2	2ft
-3	3ft
-4	4ft
-6	6ft
-8	8ft
-CR_	Continuous Run - Note length in feet
FIXTURE FINISH	
-MW	Matte White, Powder Coat
LENS / OPTICS	
-FW	Frosted White Lens
VOLTAGE	
-120	120V
-277	277V
DIMMING	
-D1	0-10V Dimming 1%
MOUNTING OPTIONS	
-SM	Surface Mount
-CSS-DR	Cable Suspended - Direct
-CSS-IN	Cable Suspended - indirect
CANOPY/CABLE LENGTH	
-36MW	5" Round Matte White Canopy, 36" Aircraft Cable
-36FB	5" Round Flat Black Canopy, 36" Aircraft Cable
-36MS	5" Round Matte Silver Canopy, 36" Aircraft Cable

Click or scan for the spec sheet, or visit our website for the latest specification information.

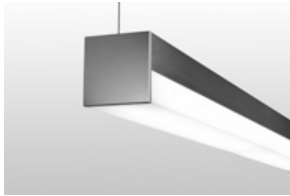


KELSEY LED 3.25" Square Architectural

Example: KEL-LED-325-SLO-30-8-MW-FW-120-CSS-DR-36MW

CATALOG NUMBER	DESCRIPTION
KEL-LED-325	3.25" Square Architectural
LIGHT OUTPUT	
-SLO	Standard Lumen Output
-HLO	High Lumen Output
CCT/CRI	
-30	3000K / 80CRI
-35	3500K / 80CRI
NOMINAL LENGTH	
-2	2ft
-3	3ft
-4	4ft
-6	6ft
-8	8ft
-CR_	Continuous Run - Note length in feet
FIXTURE FINISH	
-MW	Matte White, Powder Coat
LENS / OPTICS	
-FW	Frosted White Lens
VOLTAGE	
-120	120V
-277	277V
DIMMING	
-D1	0-10V Dimming 1%
MOUNTING OPTIONS	
-SM	Surface Mount
-CSS-DR	Cable Suspended - Direct
-CSS-IN	Cable Suspended - indirect
CANOPY/CABLE LENGTH	
-36MW	5" Round Matte White Canopy, 36" Aircraft Cable
-36FB	5" Round Flat Black Canopy, 36" Aircraft Cable
-36MS	5" Round Matte Silver Canopy, 36" Aircraft Cable

Click or scan for the spec sheet, or visit our website for the latest specification information.



NOLAN LED 2.25" Precision-Edged Luminaire

Example: NOL-LED-225-SLO-30-8-MW-FW-120-CSS-DR-36MW

	CATALOG NUMBER	DESCRIPTION
	NOL-LED-225	2.25" Precision-Edged Luminaire
LIGHT OUTPUT	-SLO	Standard Lumen Output
	-HLO	High Lumen Output
CCT/CRI	-30	3000K / 80CRI
	-35	3500K / 80CRI
NOMINAL LENGTH	-2	2ft
	-3	3ft
	-4	4ft
	-6	6ft
	-8	8ft
	-CR_	Continuous Run - Note length in feet
FIXTURE FINISH	-MW	Matte White, Powder Coat
LENS / OPTICS	-FW	Frosted White Lens
VOLTAGE	-120	120V
	-277	277V
DIMMING	-D1	0-10V Dimming 1%
MOUNTING OPTIONS	-SM	Surface Mount
	-CSS-DR	Cable Suspended - Direct
	-CSS-IN	Cable Suspended - indirect
CANOPY/CABLE LENGTH	-36MW	5" Round Matte White Canopy, 36" Aircraft Cable
	-36FB	5" Round Flat Black Canopy, 36" Aircraft Cable
	-36MS	5" Round Matte Silver Canopy, 36" Aircraft Cable

Click or scan for the spec sheet, or visit our website for the latest specification information.

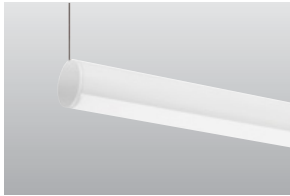


NOLAN LED 3.25" Precision-Edged Luminaire

Example: NOL-LED-325-SLO-30-8-MW-FW-120-CSS-DR-36MW

CATALOG NUMBER	DESCRIPTION	
NOL-LED-325	2.25" Precision-Edged Luminaire	
LIGHT OUTPUT	-SLO	Standard Lumen Output
	-HLO	High Lumen Output
CCT/CRI	-30	3000K / 80CRI
	-35	3500K / 80CRI
NOMINAL LENGTH	-2	2ft
	-3	3ft
	-4	4ft
	-6	6ft
	-8	8ft
	-CR_	Continuous Run - Note length in feet
FIXTURE FINISH	-MW	Matte White, Powder Coat
LENS / OPTICS	-FW	Frosted White Lens
VOLTAGE	-120	120V
	-277	277V
DIMMING	-D1	0-10V Dimming 1%
MOUNTING OPTIONS	-SM	Surface Mount
	-CSS-DR	Cable Suspended - Direct
	-CSS-IN	Cable Suspended - indirect
CANOPY/CABLE LENGTH	-36MW	5" Round Matte White Canopy, 36" Aircraft Cable
	-36FB	5" Round Flat Black Canopy, 36" Aircraft Cable
	-36MS	5" Round Matte Silver Canopy, 36" Aircraft Cable

Click or scan for the spec sheet, or visit our website for the latest specification information.

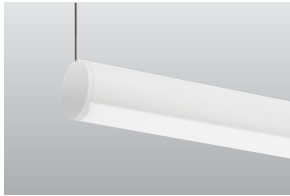


HAILEY LED 1.25" Round Architectural

Example: HAI-LED-125-SLO-30-8-MW-FW-120-CSS-DR-36MW

	CATALOG NUMBER	DESCRIPTION
	HAI-LED-125	1.25" Round Architectural with Remote Driver
LIGHT OUTPUT	-SLO	Standard Lumen Output
	-HLO	High Lumen Output
CCT/CRI	-30	3000K / 80CRI
	-35	3500K / 80CRI
NOMINAL LENGTH	-2	2ft
	-3	3ft
	-4	4ft
	-6	6ft
	-8	8ft
	-CR_	Continuous Run - Note length in feet
FIXTURE FINISH	-MW	Matte White, Powder Coat
LENS / OPTICS	-FW	Frosted White Lens
VOLTAGE	-120	120V
	-277	277V
DIMMING	-D1	0-10V Dimming 1%
MOUNTING OPTIONS	-CSS-DR	Cable Suspended - Direct
	-CSS-IN	Cable Suspended - indirect
CABLE LENGTH / CORD COLOR	-36-W	36" Aircraft Cable with White Power Cord
	-36-B	36" Aircraft Cable with Black Power Cord
	-36-G	36" Aircraft Cable with Grey Power Cord
CANOPY OPTION / FINISH	-STND-MW	5" Round Matte White Canopy with Bracket Bar
	-STND-SMT	5" Round Silver Matte Textured Canopy with Bracket Bar

Click or scan for the spec sheet, or visit our website for the latest specification information.

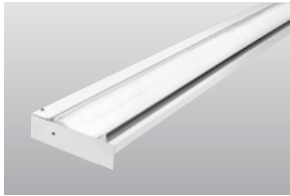


HAILEY LED 2.25" Round Architectural

Example: HAI-LED-225-IB-SLO-30-8-MW-FW-120-CSS-DR-36MW

	CATALOG NUMBER	DESCRIPTION
	HAI-LED-225-IB	2.25" Round Architectural with Integral Driver
	HAI-LED-225-RB	2.25" Round Architectural with Remote Driver
LIGHT OUTPUT	-SLO	Standard Lumen Output
	-HLO	High Lumen Output
CCT/CRI	-30	3000K / 80CRI
	-35	3500K / 80CRI
NOMINAL LENGTH	-2	2ft
	-3	3ft
	-4	4ft
	-6	6ft
	-8	8ft
	-CR_	Continuous Run - Note length in feet
FIXTURE FINISH	-MW	Matte White, Powder Coat
LENS / OPTICS	-FW	Frosted White Lens
VOLTAGE	-120	120V
	-277	277V
DIMMING	-D1	0-10V Dimming 1%
MOUNTING OPTIONS	-CSS-DR	Cable Suspended - Direct
	-CSS-IN	Cable Suspended - indirect
CABLE LENGTH / CORD COLOR	-36-W	36" Aircraft Cable with White Power Cord
	-36-B	36" Aircraft Cable with Black Power Cord
	-36-G	36" Aircraft Cable with Grey Power Cord
CANOPY OPTION / FINISH	-STND-MW	5" Round Matte White Canopy with Bracket Bar
	-STND-SMT	5" Round Silver Matte Textured Canopy with Bracket Bar

Click or scan for the spec sheet, or visit our website for the latest specification information.

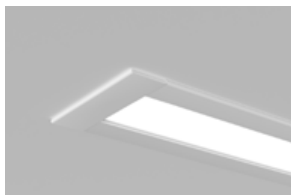


ASHLEY LED Shadow-Free Cove Lighting

Example: ASH-LED-SLO-30-10-4-120-D1

	CATALOG NUMBER	DESCRIPTION
	ASH-LED	Cove Lighting
LIGHT OUTPUT	-SLO	Standard Lumen Output (4.4W/ft - 510lm/ft)
	-HLO	High Lumen Output (9W/ft - 980lm/ft)
CCT/CRI	-30	3000K / 80CRI
	-35	3500K / 80CRI
OPTICS	-10	Narrow Distribution
	-80	Wide Distribution
NOMINAL LENGTH	-2	2ft
	-3	3ft
	-4	4ft
	-CR_	Continuous Run - Note length in feet (Runs are made up of 4' nominal fixtures unless otherwise specified)
VOLTAGE	-120	120V
	-277	277V
DIMMING	-D1	0-10V Dimming 1%

Click or scan for the spec sheet, or visit our website for the latest specification information.

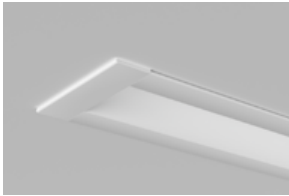


Birchwood 1.65" Recessed Linear Flush

Example: BW165RF-TG09-L025-309-HE-10V1-UNV-MTGB

CATALOG NUMBER	DESCRIPTION
BW165RF	1.65" Profile - Recessed Flush
LENGTH __F__	Linear (specify feet)F(specify Inch) (ex: 02F00 = 02ft, 00in)
FLANGE	GRID CEILING:
	-TG09 T-Grid 9/16"
	-TG15 T-Grid 5/16"
	-TT09 Tegular 9/16"
	-TT15 Tegular 9/16"
	-TI09 Interlude 9/16"
	-TS09 Slot 9/16"
	GYPSUM CEILING:
	-TRMW 3/4" Trim Flange, Matte White
	-TLMI Trimless Mud-In Flange
WATTAGE	
	-L025 3W/ft
	-L050 5W/ft
	-L075 8W/ft
	-L100 10W/ft
Voltage	
	-309 3000K, 90CRI
	-359 3500K, 90CRI
OPTICS/LENS	
	-HE Harmonized Efficiency
	-FW Frosted White
	-DR Drop Lens
	-AS Asymmetric
DIMMING	
	-10V1 1% 0-10V
VOLTAGE	
	-UNV 120V-277V
MOUNTING	GRID CEILING:
	-MTGB Mounting Bracket
	GYPSUM CEILING, TRIM FLANGE:
	-MTRS Side Blocking
	-MTRO Overhead Bracket
	-MTRH Hanger Bracket
	GYPSUM CEILING, MUD-IN TRIMLESS:
	-MMIS Side Blocking

Click or scan for the spec sheet, or visit our website for the latest specification information.



Birchwood 1.65" Recessed Linear Regressed 1"

Example: BW165R1-TG09-L025-309-HE-10V1-UNV-MTGB

CATALOG NUMBER	DESCRIPTION
BW165R1	1.65" Profile - Regressed 1"
LENGTH __F__	Linear (specify feet)F(specify Inch) (ex: 02F00 = 02ft, 00in)
FLANGE	GRID CEILING:
	-TG09 T-Grid 9/16"
	-TG15 T-Grid 5/16"
	-TT09 Tegular 9/16"
	-TT15 Tegular 9/16"
	-TI09 Interlude 9/16"
	-TS09 Slot 9/16"
	GYP SUM CEILING:
	-TRMW 3/4" Trim Flange, Matte White
	-TLMI Trimless Mud-In Flange
WATTAGE	-L025 3W/ft
	-L050 5W/ft
	-L075 8W/ft
	-L100 10W/ft
CCT/CRI	-309 3000K, 90CRI
	-359 3500K, 90CRI
OPTICS/LENS	-HE Harmonized Efficiency
	-FW Frosted White
	-AS Asymmetric
DIMMING	-10V1 1% 0-10V
VOLTAGE	-UNV 120V-277V
MOUNTING	GRID CEILING:
	-MTGB Mounting Bracket
	GYP SUM CEILING, TRIM FLANGE:
	-MTRO Overhead Bracket
	-MTRH Hanger Bracket
	GYP SUM CEILING, MUD-IN TRIMLESS:
	-MMIS Side Blocking

Click or scan for the spec sheet, or visit our website for the latest specification information.

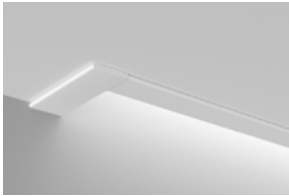


Birchwood 1.65" Recessed Perimeter Flush

Example: BW165PF-TG09-L025-309-HE-10V1-UNV-MTGB

CATALOG NUMBER	DESCRIPTION
BW165PF	1.65" Profile - Recessed Perimeter Flush
LENGTH ___F__	Linear (specify feet)F(specify Inch) (ex: 02F00 = 02ft, 00in)
FLANGE	GRID CEILING:
	-TG09 T-Grid 9/16"
	-TG15 T-Grid 5/16"
	-TT09 Tegular 9/16"
	-TT15 Tegular 9/16"
	-TI09 Interlude 9/16"
	-TS09 Slot 9/16"
	GYPSON CEILING:
	-TRMW 3/4" Trim Flange, Matte White
	-TLMI Trimless Mud-In Flange
CCT/CRI	
-309	3000K, 90CRI
-359	3500K, 90CRI
OPTICS/LENS	
-HE	Harmonized Efficiency
-FW	Frosted White
-AS	Asymmetric
DIMMING	
-10V1	1% 0-10V
VOLTAGE	
-UNV	120V-277V
MOUNTING	GRID CEILING:
	-MTGB Mounting Bracket
	GYPSON CEILING, TRIM FLANGE:
	-MTRS Side Blocking
	-MTRO Overhead Bracket
	-MTRH Hanger Bracket
	GYPSON CEILING, MUD-IN TRIMLESS:
	-MMIS Side Blocking

Click or scan for the spec sheet, or visit our website for the latest specification information.

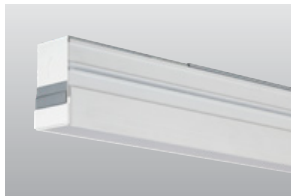


Birchwood 1.65" Recessed Perimeter Regressed 3"

Example: BW165P3-TG09-L025-309-HE-10V1-UNV-MTGB

CATALOG NUMBER	DESCRIPTION
BW165P3	1.65" Profile - Recessed Perimeter Regressed 3"
LENGTH	__F__ Linear (specify feet)F(specify Inch) (ex: 02F00 = 02ft, 00in)
FLANGE	GRID CEILING:
	-TG09 T-Grid 9/16"
	-TG15 T-Grid 5/16"
	-TT09 Tegular 9/16"
	-TT15 Tegular 9/16"
	-TI09 Interlude 9/16"
	-TS09 Slot 9/16"
	GYPSUM CEILING:
	-TRMW 3/4" Trim Flange, Matte White
	-TLMI Trimless Mud-In Flange
CCT/CRI	-309 3000K, 90CRI
	-359 3500K, 90CRI
OPTICS/LENS	-HE Harmonized Efficiency
	-FW Frosted White
	-AS Asymmetric
DIMMING	-10V1 1% 0-10V
VOLTAGE	-UNV 120V-277V
MOUNTING	GRID CEILING:
	-MTGB Mounting Bracket
	GYPSUM CEILING, TRIM FLANGE:
	-MTRO Overhead Bracket
	-MTRH Hanger Bracket
	GYPSUM CEILING, MUD-IN TRIMLESS:
	-MMIS Side Blocking

Click or scan for the spec sheet, or visit our website for the latest specification information.

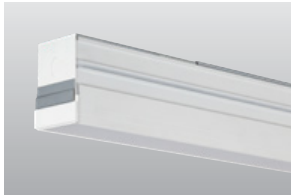


JAKE LED 1.65" Recessed Linear LED

Example: JAK-LED-165-TR-SLO-30-8-HE-120-D1-MW-OHMB

	CATALOG NUMBER	DESCRIPTION
	JAK-LED-165	1.65" Profile
Trim Style	-TR	3/4" Flanged Trim
	-TL	Trimless Mud Flange, Mill Finish only)
LIGHT OUTPUT	-SLO	Standard Lumen Output
	-HLO	High Lumen Output
CCT/CRI	-30	3000K / 80CRI
	-35	3500K / 80CRI
NOMINAL LENGTH	-2	2ft
	-3	3ft
	-4	4ft
	-6	6ft
	-8	8ft
	-CR_	Continuous Run - Note length in feet (Runs are made up of 4' nominal fixtures unless otherwise specified)
OPTICS/LENS	-FW	Frosted White
VOLTAGE	-120	120V
	-277	277V
DIMMING	-D1	0-10V Dimming 1%
TRIM FINISH	blank	Mill Finish, Trimless Only
	-MW	Matte White, Trimmed
MOUNTING OPTIONS	-OHMB	Overhead Mounting Bracket
	-BF	Backer Flange
	-HB	Hanger Bracket

Click or scan for the spec sheet, or visit our website for the latest specification information.

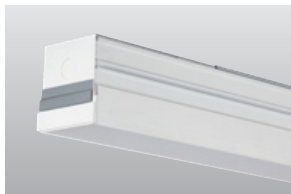


JAKE LED 2.25" Recessed Linear LED

Example: JAK-LED-225-TR-SLO-30-8-HE-120-D1-MW-OHMB

CATALOG NUMBER	DESCRIPTION	
JAK-LED-225	2.25" Profile	
Trim Style	-TR	3/4" Flanged Trim
	-TL	Trimless Mud Flange, Mill Finish only)
LIGHT OUTPUT	-SLO	Standard Lumen Output
	-HLO	High Lumen Output
CCT/CRI	-30	3000K / 80CRI
	-35	3500K / 80CRI
NOMINAL LENGTH	-2	2ft
	-3	3ft
	-4	4ft
	-6	6ft
	-8	8ft
	-CR_	Continuous Run - Note length in feet (Runs are made up of 4' nominal fixtures unless otherwise specified)
OPTICS/LENS	-FW	Frosted White
VOLTAGE	-120	120V
	-277	277V
DIMMING	-D1	0-10V Dimming 1%
TRIM FINISH	blank	Mill Finish, Trimless Only
	-MW	Matte White, Trimmed
MOUNTING OPTIONS	-OHMB	Overhead Mounting Bracket
	-BF	Backer Flange
	-HB	Hanger Bracket

Click or scan for the spec sheet, or visit our website for the latest specification information.



JAKE LED 3.25" Recessed Linear LED

Example: JAK-LED-325-TR-SLO-30-8-HE-120-D1-MW-OHMB

CATALOG NUMBER	DESCRIPTION	
JAK-LED-325	3.25" Profile	
Trim Style	-TR	3/4" Flanged Trim
	-TL	Trimless Mud Flange, Mill Finish only)
LIGHT OUTPUT	-SLO	Standard Lumen Output
	-HLO	High Lumen Output
CCT/CRI	-30	3000K / 80CRI
	-35	3500K / 80CRI
NOMINAL LENGTH	-2	2ft
	-3	3ft
	-4	4ft
	-6	6ft
	-8	8ft
	-CR_	Continuous Run - Note length in feet (Runs are made up of 4' nominal fixtures unless otherwise specified)
OPTICS/LENS	-FW	Frosted White
VOLTAGE	-120	120V
	-277	277V
DIMMING	-D1	0-10V Dimming 1%
TRIM FINISH	blank	Mill Finish, Trimless Only
	-MW	Matte White
MOUNTING OPTIONS	-OHMB	Overhead Mounting Bracket
	-BF	Backer Flange
	-HB	Hanger Bracket

Click or scan for the spec sheet, or visit our website for the latest specification information.

Visit www.birchwoodlighting.com
For Latest Specifications

Consult Factory For Alternate
Dimming Adders

Birchwood Lighting

725 Landwehr Road
Northbrook, IL 60062

Tel: 714 550-7118
Fax: 847 559-5505

www.birchwoodlighting.com

A Leviton Company
www.leviton.com

Printed in the U.S.A
© Copyright 2024. Birchwood Lighting. All Rights Reserved.

Birchwood Lighting reserves the right to discontinue products or change the technical specifications of its products at any time without notice. Select products in this catalog have patent protection or patents pending.