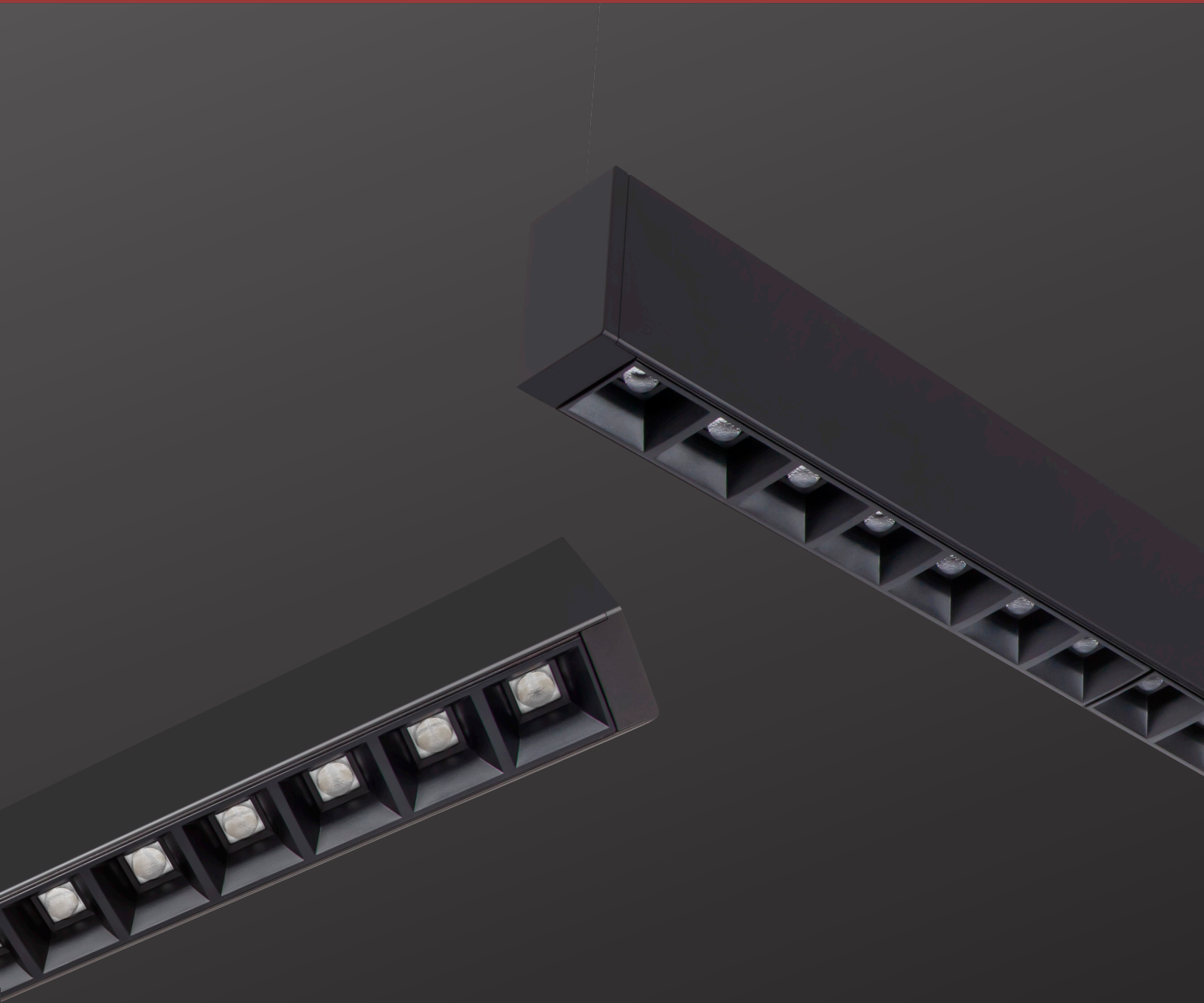


BW165 Q0

Quiet Optics, Brilliant Performance



BW165 QO



PROFILE SIZES



1.65"

MOUNTING TYPES



Cable Suspended



Wall Mount

LENS APPLICATION TYPES



Quiet Optic
(Standard Direct)



Flush
(Standard Indirect)

Our new Quiet Optics effortlessly integrate into the award-winning BW165 in 50° or 80° distributions to provide excellent coverage. Create your ideal space by combining our direct side micro distribution with an indirect 150° batwing optic or standard high efficacy lensing. Built for power and convenience, the BW165 QO is available in standalone lengths up to 8 feet or continuous runs with uninterrupted illumination.

Light Source Features:

- Lumen output between 250-1000lm/ft.
- 2700K, 3000K, 3500K or 4000K at 92 CRI
- 3 Step MacAdam (3 SDCM)
- Rated life of L70 > 60,000 hours based on LED testing per LM-80-08 and projected values using IESNA TM21-11

Construction:

- Extruded 6063-T6 aluminum for a balance of weight, durability & strength
- Precision machined aluminum end caps with no visible hardware
- Trims are color matched to housing finish.
- Available finishes includes powder coated Matte White (MW), Flat Black (FB) and Anodized Satin Clear (SC)

Electrical:

- Multiple Dimming Options Including: 0-10V, Lutron & DALI
- UL & cUL listed

NOMINAL LENGTH



Standalone
2', 4' 6' or 8'



Continuous Run
Consult factory for options & specifications

LENS/OPTIC TYPES

DIRECT

Efficacy:
Up to 112lm/W
Beam: 50°



50° Narrow Flood
(NF)

Efficacy:
Up to 112lm/W
Beam: 80°



80° Wide Flood
(WF)

DIRECT/INDIRECT

Efficacy:
Up to 115lm/W
Beam: 125°



High Efficiency
(HE)

Efficacy:
Up to 109lm/W
Beam: 105°



Asymmetrical
(AS)

Efficacy:
up to 95lm/W
Beam: 150°



Indirect Batwing
(BW)