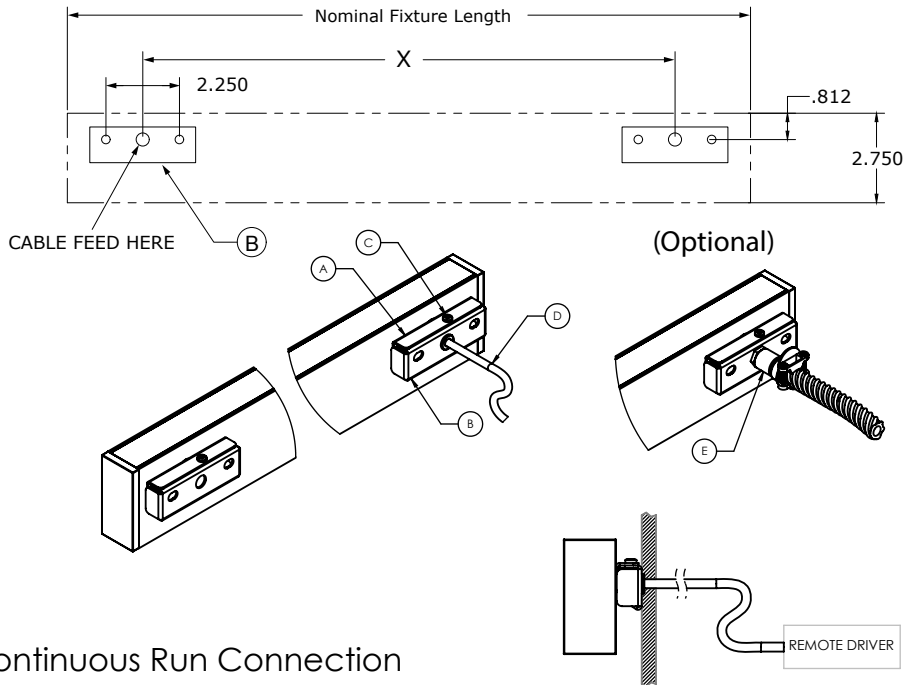


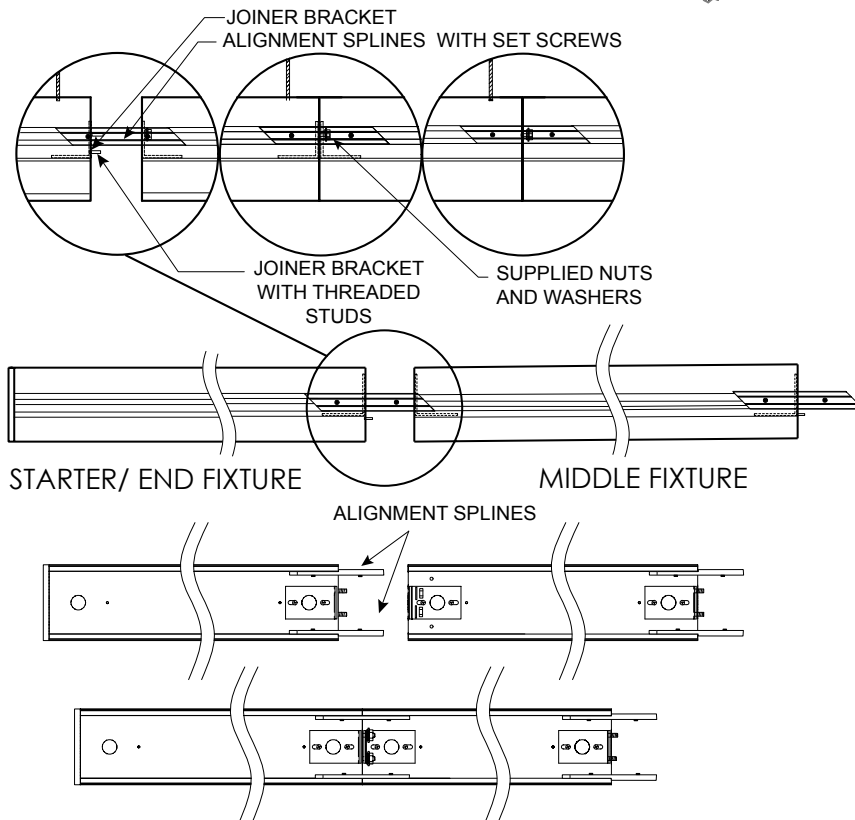
**INSTRUCTION SHEET**

WMB (Wall Mount Bracket)



1. Remove top lens and liner.
2. Measure where fixture will be mounted and drill hole for power feed.
3. Feed low voltage power cable (D) thru wall and connect to remote driver. Note: if flex conduit (by others) is required for installation, use provided adaptor (E) and attach to wall hook bracket (B). 3/8" flex conduit (by others) is required.
4. Mud-in wall as needed.
5. Install wall hook bracket (B) using suitable 1/4" lag bolts or hollow wall anchors. See table for dimension (X). Ensure power feed has sufficient length to enter fixture.
6. Pass power feed wires thru wall hook bracket (A) and hang fixture on wall hook brackets (B)
7. Install supplied screw (C)
8. Make wire connections inside fixture with wire nuts.
9. Reinstall liner and lens.

**Continuous Run Connection**



**For Continuous Run**

1. Install next fixture in run, by installing brackets according to table below so that open end of fixture will butt up flush with open end of adjacent fixture
2. Slide open end of fixture over adjacent fixture's continuous run bracket studs and alignment splines.
3. Secure with supplied washers and nuts (Note: the internal joiner bracket should be set back approximately 1/16" from the edge of the fixture - they can be adjusted if necessary).
4. Connect the joiner brackets together by tightening nuts, pulling fixtures together.
5. Tighten set screws on housing aligner.
6. Continue installation with all other fixtures.

**WALL MOUNT BRACKET CENTERS**

Nominal Fixture Length	X
2'	20"
3'	32"
4'	44"
6'	68"
8'	92"

**Note:** To be installed by a qualified electrician per N.E.C. and all local codes.

**820-00138**

V-0118