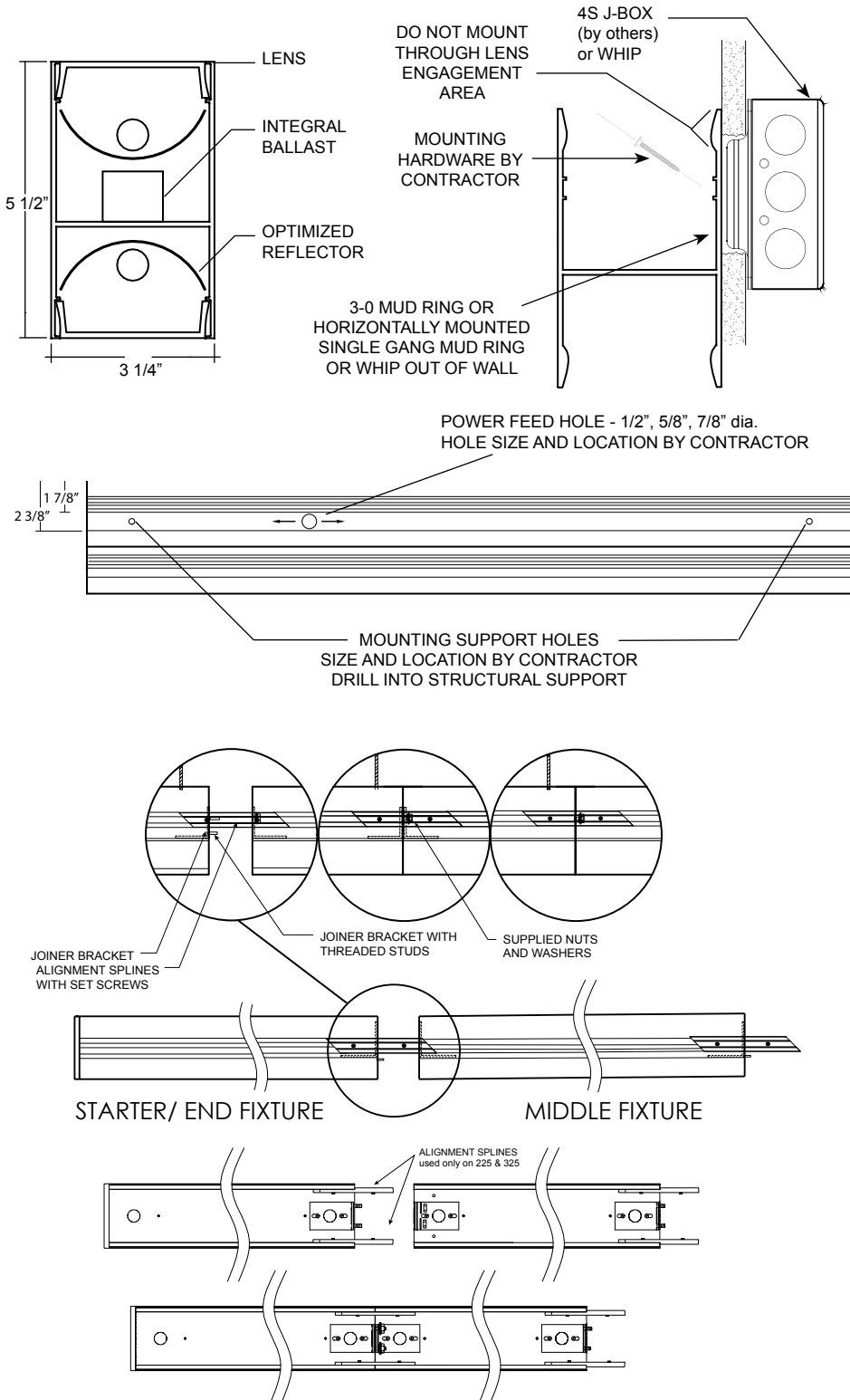


INSTRUCTION SHEET

WM - Wall Mount (325 only)



1. Install 4S J-Box with 3-0, single gang mud ring horizontally mounted, or other suitable UL approved J-Box (by others). Alternately a whip with a UL approved conduit snap-in flex connector can be stubbed out of the mounting surface, provided by others.
2. Remove lens or louver (if applicable) and internal reflector.
3. Determine fixture's location on wall and note/mark the center of the J-Box on the fixture.
4. Drill appropriate size hole for wire feed-through fixture. **DO NOT DRILL INTO BALLAST** -Relocate ballast if necessary. Insert bushing (by others).
5. Drill mounting support holes near ends of fixture. (Support method to be determined by contractor).
6. Complete wire make-up inside fixture.
7. For continuous run, through wire from power feed from first fixture in run.
8. Securely mount fixture to surface. For continuous run applications, install additional fixtures repeating steps 1-6 while also connecting fixtures together with continuous run joining bracket system and aligner (provided).
9. Re-install reflector.
10. Install lamp.
11. If applicable, install lens and louver.

Note: To be installed by a qualified electrician per N.E.C. and all local codes.

820-00069
V-0714