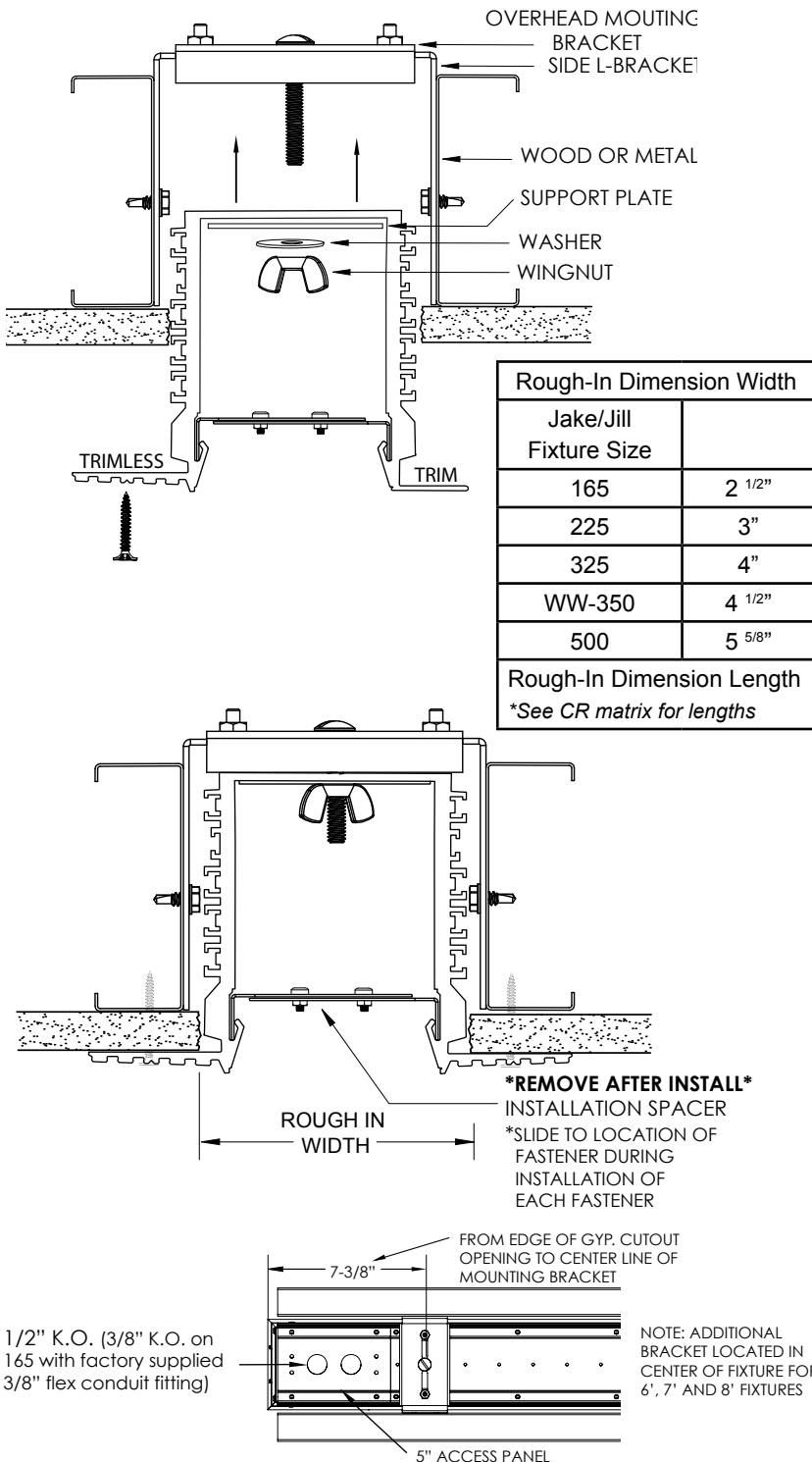


INSTRUCTION SHEET

Installation Guide OHMB



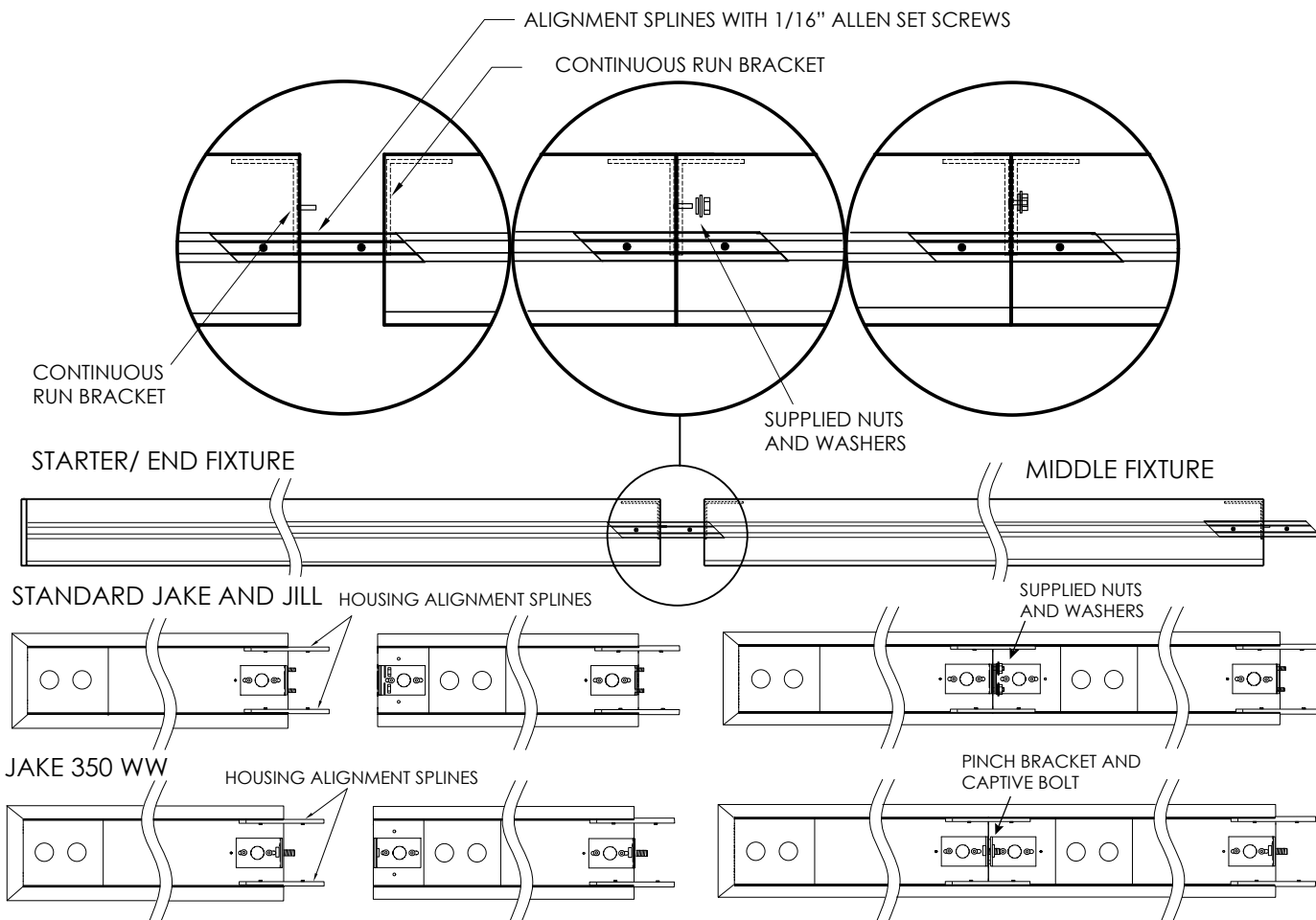
1. Attach Side L-Brackets to structure as shown. Center of Side L-Bracket should be 7 3/8" from end of rough-in opening. Alternately (not shown) 1/4-20 threaded rod can be run from structure through the top of the Overhead Mounting Bracket (after removing provided 1/4-20 screw)
2. Wiring:
Standard JAKE/ JILL - Remove lens and internal reflector / LED tray
JAKE 350 WW - Remove driver cover and Light Bar and set aside in a safe location. Bring conduit through back of fixture (via access panel) or end-cap of first fixture (if continuous run installation).
3. Slide fixture through roughed-out opening and slip fixture through two threaded 1/4-20 studs (or rods). Slide on support plate and washer over stud and tighten wing nut until fixture flange is flush with mounting surface.
4. When installing Trimless Mud Flange, installer may secure Flange to structure (if desired) by following steps noted on TL Side Blocking installation sheet. Pay special attention to ensure screws are straight when installing fasteners. During installation of fasteners, slide Installation Spacer down the length of fixture between mud-over flange and structure to correctly align the lens opening. Remove spacers once installation is complete. (N/A JAKE 350 WW)
5. When installing continuous runs, thru-wire the fixtures using the appropriate gauge of wire. Use pinch brackets and alignment splines (installed on fixture) to join together when aligning adjacent fixtures.
6. After fixtures are secure to structure, remove Installation Spacer (N/A JAKE 350 WW) and install the internal reflector and lamps for standard Jake. Install Driver cover and light bar in JAKE 350 WW. Reinstall lens to ensure proper fit (N/A JAKE 350 WW).
7. On Trimless Mud Flange installations if lens is loose or does not fit, repeat Step 4 and ensure screws are straight and Installation Spacer is installed correctly. Re-test lens engagement. After confirming proper lens engagement, remove lens and set aside. NOTE: Cover inside of fixture to prevent debris from entering the fixture or lens engagement. Complete finish and painting of mud-over surface. Reinstall lens to ensure proper fit. (N/A JAKE 350 WW)

Note: To be installed by a qualified electrician per N.E.C. and all local codes. Additional support to structural member may be required. Check with local building codes for requirements

820-00062
V-0417

INSTRUCTION SHEET

Installation Guide



Instructions

1. Connect power to starter fixture power supply.
2. Thru-wire to second fixture.
3. Slide open the end of the fixture over the starter fixture's continuous run housing alignment splines.
4. Standard JAKE/JILL - Line up holes on continuous run brackets. Secure with supplied #8 bolts, washers, and 11/32 nuts.
JAKE 350 WW - Line up captive bolt with threaded bracket and tighten to suck sections together.
(note: the internal "L" brackets should be set back approximately 1/16" from the edge of the fixture - tighten 1/16" allen set screws on alignment splines.)
5. Continue steps 1-4 until run is completed, (same steps apply for end fixtures).
6. Standard JAKE/ JILL Install liner/ tray.
350 WW install Light Bar and Driver cover.
7. Install lamp(s) if fluorescent
8. Install lens. (N/A in 350 WW)

Note: To be installed by a qualified electrician per N.E.C. and all local codes.
Additional support to structural member may be required. Check with local building codes for requirements

820-00115
V-0417