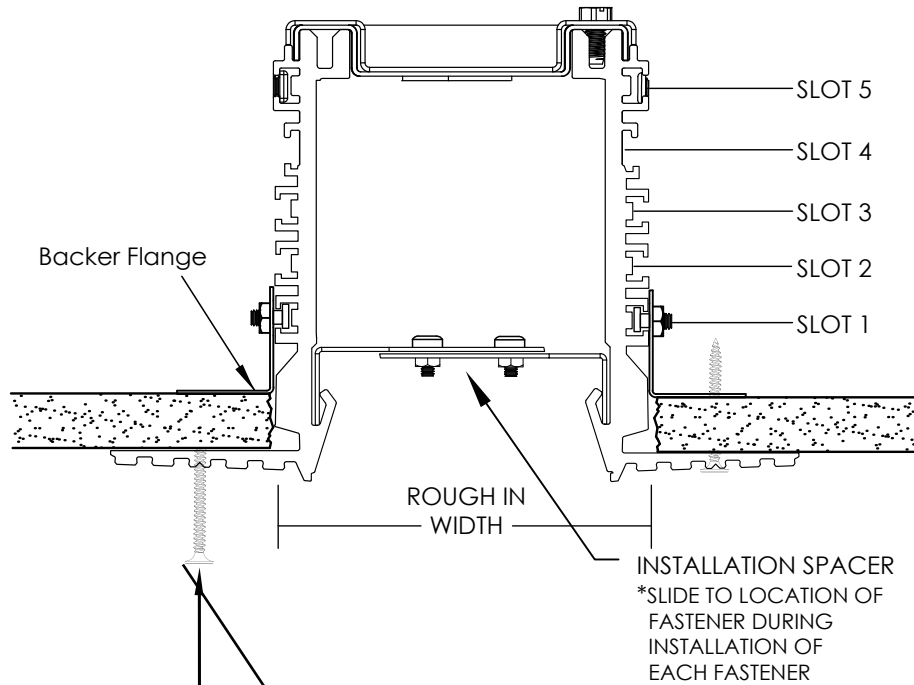


INSTRUCTION SHEET

New Construction Installation Guide



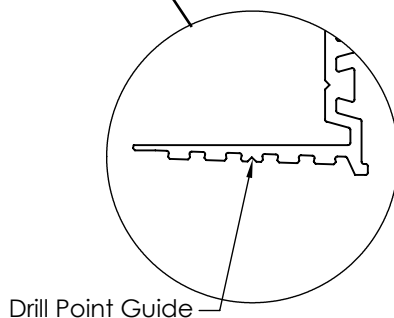
1. During installation of fasteners, slide Installation Spacer down the length of fixture between mud-over flange and Backer Flange to correctly align the lens opening. NOTE: Pay special attention to ensure screws are straight when installing fasteners.

2. After fixtures are secure to structure, remove Installation Spacer and install the internal reflector and lamps. Reinstall lens to ensure proper fit. NOTE: If lens is loose or does not fit, repeat Step 7 and ensure screws are straight and Installation Spacer is installed correctly.

3. Re-test lens engagement. After confirming proper lens engagement, remove lens and set aside while completing the mud-over process. NOTE: Cover inside of fixture to prevent debris from entering the fixture or lens engagement.

4. Complete finish and painting of mud-over surface. Reinstall lens; ensuring proper fit.

Drill 3/16" Countersunk hole and screw drywall screws through mud flange. Use Screws suitable for .035 metal studs

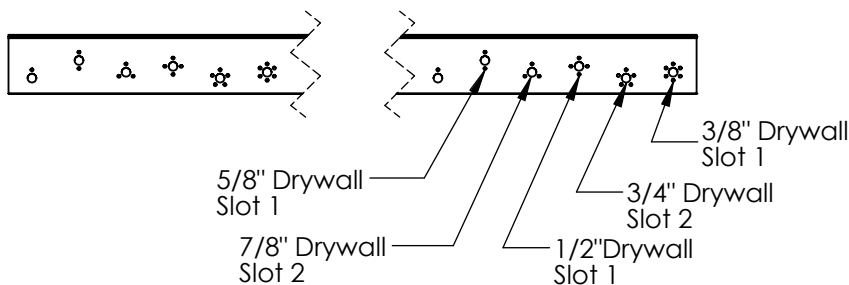
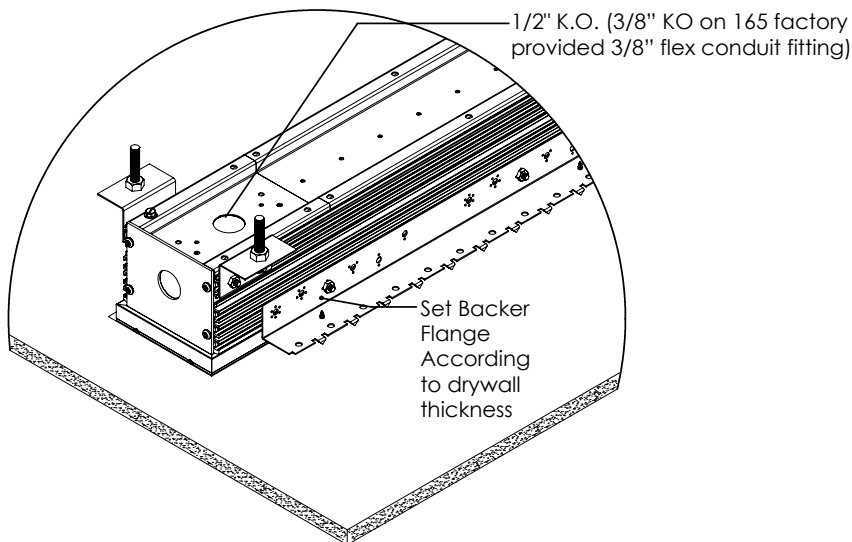


Note: To be installed by a qualified electrician per N.E.C. and all local codes. Additional support to structural member may be required. Check with local building codes for requirements

820-00063
V-1114

INSTRUCTION SHEET

New Construction Installation Guide



Rough-In Dimension Width	
Jake/Jill Fixture Size	
165	2 1/2"
225	3"
325	4"
WW-350	4 1/2"
500	5 5/8"
Rough-In Dimension Length	
*See CR matrix for lengths	

1. Slide 2-studs per Backer Flange into appropriate slot. Slip Backer Flange over studs matching to proper holes (according to drywall thickness) and tighten with provided 8-32 hex nuts.

2. Slide 2-studs per Hanger Mounting bracket into Slot 5 (see drawing). Secure Hanger Mounting brackets to fixture housing with provided 8-32 hex nuts.

3. Attach 1/4-20 threaded rod to Hanger Mounting brackets to suspend fixture at desired AFF. If preferred (not shown) fixture can be secured to structure with fasteners (supplied by others) via the Hanger Mounting brackets, or through the back of the fixture body.

NOTE: Leave installation spacer inside fixture to prevent deformation during installation. (N/A JAKE 350 WW) If installing fixtures directly to structure, when drilling mounting holes be careful not to damage the ballast/driver (which may be moved if necessary via the fixture access panel).

4. Wiring:
Standard JAKE/ JILL - Remove lens and internal reflector and set aside in a safe location.
JAKE 350 WW - Remove Driver cover and Light Bar.
Bring conduit through back of fixture (via access panel) or end-cap of first fixture (if continuous run installation).

5. Thru-wire fixtures using the appropriate gauge of wire. When installing continuous runs, and aligning adjacent fixtures, use pinch brackets and alignment splines (installed on fixture) to join together.

6. Slip drywall between mud-over flange and Backer Flange. Secure mud-over flange to Backer Flange following instructions below (Steps 7-10).

Note: To be installed by a qualified electrician per N.E.C. and all local codes.

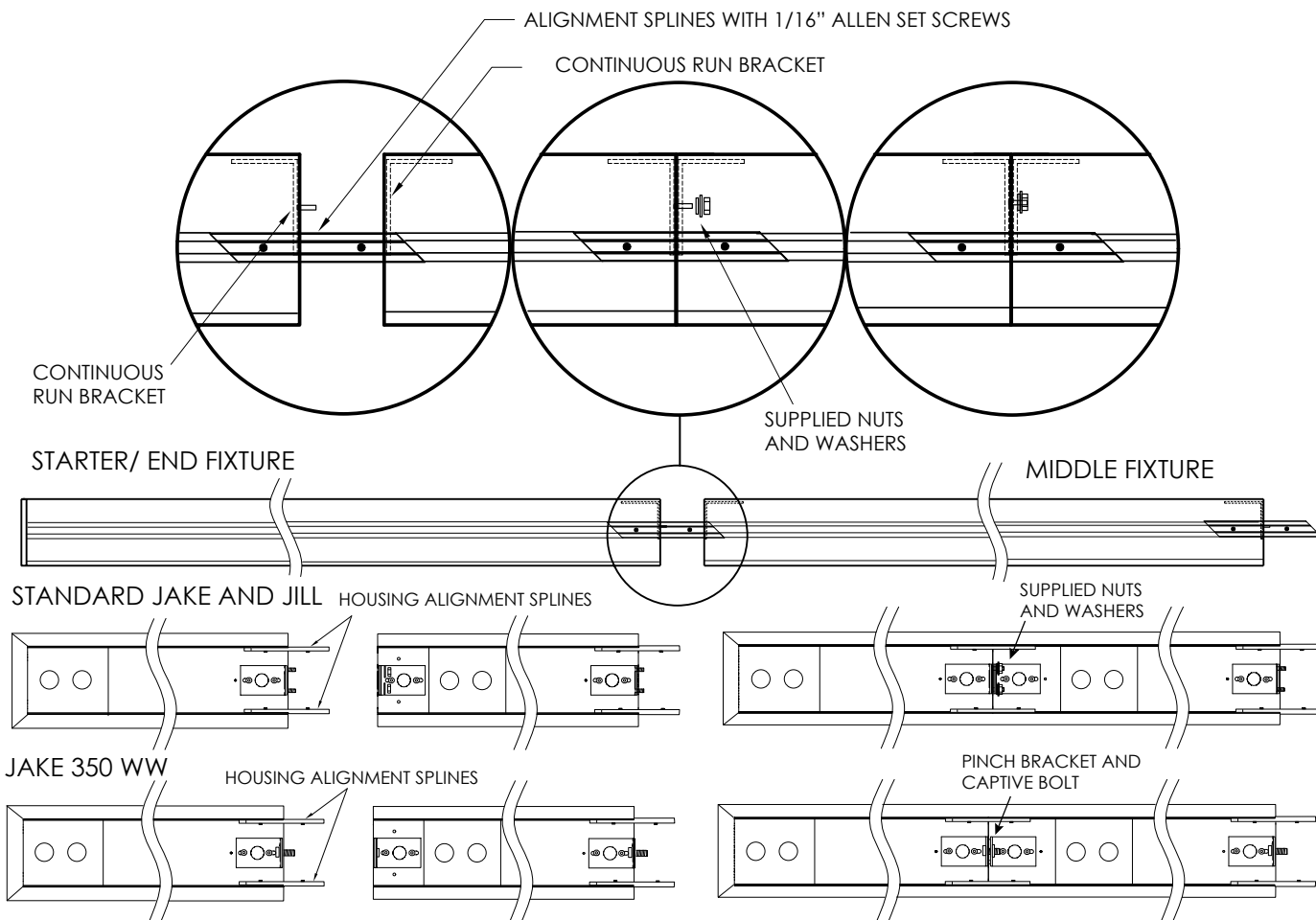
Additional support to structural member may be required. Check with local building codes for requirements

820-00063

V-0417

INSTRUCTION SHEET

Installation Guide



Instructions

1. Connect power to starter fixture power supply.
2. Thru-wire to second fixture.
3. Slide open the end of the fixture over the starter fixture's continuous run housing alignment splines.
4. Standard JAKE/JILL - Line up holes on continuous run brackets. Secure with supplied #8 bolts, washers, and 11/32 nuts.
JAKE 350 WW - Line up captive bolt with threaded bracket and tighten to suck sections together.
(note: the internal "L" brackets should be set back approximately 1/16" from the edge of the fixture - tighten 1/16" allen set screws on alignment splines.)
5. Continue steps 1-4 until run is completed, (same steps apply for end fixtures).
6. Standard JAKE/ JILL Install liner/ tray.
350 WW install Light Bar and Driver cover.
7. Install lamp(s) if fluorescent
8. Install lens. (N/A in 350 WW)

Note: To be installed by a qualified electrician per N.E.C. and all local codes.
Additional support to structural member may be required. Check with local building codes for requirements

820-00115
V-0417