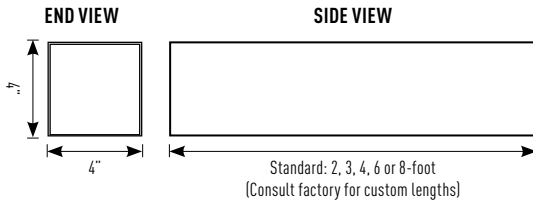
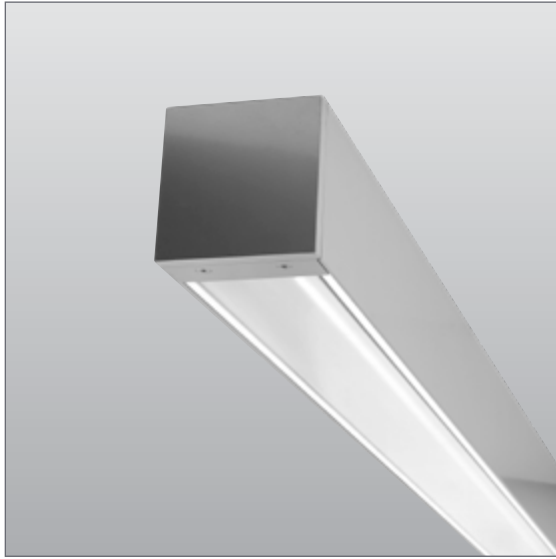


VAN-LED-WW-400 / CSS

VANESSA 4" Square LED Wall Wash Wet Location Luminaire w/ Cable Suspended Option (CSS)

TYPE:

JOB NAME:



Light Output	Nominal Delivered	System Wattage	Efficacy
Wall Wash / 4000K / 80 CRI			
SLO	245 lm/ft	4.4 W/ft	55.7 lm/W
HLO	471 lm/ft	9 W/ft	52.3 lm/W

Wattage includes driver and LED Module consumption. Delivered lumen output will vary depending on CCT, CRI and Optic selection.

CONSTRUCTION

Heavy gauge square extruded aluminum housing. Precision-machined aluminum end-caps. Extruded acrylic lenses. Stainless steel hardware. Concealed weather-seal gaskets at end caps, lens and power entry on all stand-alone or continuous run fixtures with an IP65 rating. Feed points accept 1/2" trade size threaded wet location conduit fittings.

MOUNTING OPTIONS

(CSS) Cable Suspension System field adjustable 1/16" aircraft cable

FINISHES

(SL) Silver Matte Texture, (MW) Matte White, or (FB) Flat Black. Other powder coat finishes available. Consult factory for details.

LED LIGHT ENGINE SYSTEM

LED Light Engines are available as HLO (High Lumen Output) and SLO (Standard Lumen Output) providing efficient illumination. CLO (Custom Lumen Output) allows for end user specified lumen output or tailored wattage consumption for certain models. Consult factory for details.

DIMMING

Dimming is available with a variety of control protocols and options. Consult factory for availability and specifications.

FIXTURE LENGTH

Fixtures are available in 2', 3', 4', 6' and 8' nominal lengths. Continuous run mounting available featuring water-sealed gaskets within knock-outs for maintaining WL rating. See installation section for more details.

ELECTRICAL

Rated for operation with ambient temperatures not to exceed 40°C. Use specification code "HAT" for applications where ambient will be between 40° and 45°C. The "HAT" option is a thermistor which will control internal temperatures so as not to exceed internal device maximum temperature. At certain temperature thresholds, fixture will dim light output to keep internal temperatures within the acceptable range.

LISTING / WARRANTY

- 5-Year Limited Warranty
- UL listed to US and Canadian standards for wet locations
- IP65 Rated



ORDERING CODE: (Example: VAN-LED-WW-400SLO-309-2-STND-MW-120-D10)

1: Model	2: Light Output	3: CCT/CRI	4: Nominal Length	5: Power Feed	6: Finishes	7: Voltage	8: Dimming	9: CSS: Canopy Option	10: Options
VAN-LED-WW-400 (VANESSA 4" Square LED Wall Wash Wet Location Luminaire)	-SLO (Standard Lumen Output)	-279 (2700K / 90CRI)	-2 (2ft)	-STND (Standard)	-SMT (Silver Matte Textured, Powder Coat) -MW (Matte White, Powder Coat) -FB (Flat Black, Powder Coat) -CUP² (Custom Powder Coat, Consult Factory)	-120 (120V) -277 (277V) -347 (347V)	-D1 (0-10V Dimming 1%)	-CSS-36W (White Cord, 36" Aircraft Cable) -CSS-36B (Black Cord, 36" Aircraft Cable) -CSS-36G (Gray Cord, 36" Aircraft Cable) -CU (Custom, Consult Factory)	-EM³ (Emergency Backup) -HAT (High Ambient Temperature)
	-HLO (High Lumen Output)	-30 (3000K / 82CRI)	-4 (4ft)						
	-CLO (Custom Lumen Output, See CLO Calculator)	-309 (3000K / 90CRI)	-6' (6ft)						
		-35 (3500K / 82CRI) -359 (3500K / 90CRI) -40 (4000K / 82CRI) -409 (4000K / 90CRI)	-8' (8ft) -CR¹ (Continuous Run - Note length in feet)						

NOTES:

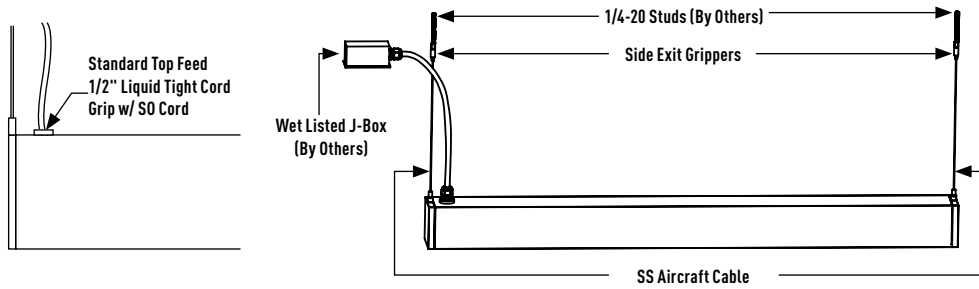
- Specify length in nominal feet
- Contact factory for custom powder coat finish
- EM's are remote mounted along with the test switch in a dry location, Consult factory for more info
- 6' & 8' Lengths are made up with (2) 3' fixtures or (2) 4' fixtures respectively

VAN-LED-WW-400 / CSS

VANESSA 4" Square LED Wall Wash Wet Location Luminaire w/ Cable Suspended Option (CSS)

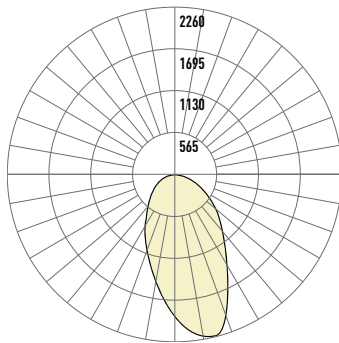
TYPE: _____
JOB NAME: _____

CABLE SUSPENSION SYSTEM



VAN-LED-WW-400-HLO-30-4

PHOTOMETRIC CURVE:



Direct (FW): 1182 lm/ft **Wattage:** 36W
Total Lumens (4ft): 4728 lm **CCT/CRI:** 3000K / 80CRI
Efficacy: 131 lm/W

LUMINANCE DATA (cd/sq.m):

Angle In Degrees	Average 0-Deg	Average 45-Deg	Average 90-Deg
45	1662	2207	9693
55	1375	1816	5644
65	653	1201	2779
75	437	409	1271
85	3	12	235

CANDELA DISTRIBUTION:

	0	10	20	30	40	50	60	70	80	90
0	2447	2447	2447	2447	2447	2447	2447	2447	2447	2447
5	2463	2461	2460	2480	2501	2494	2510	2543	2508	2453
10	2150	2199	2219	2275	2315	2394	2463	2482	2517	2445
15	1919	1939	1960	2002	2073	2171	2325	2429	2484	2367
20	1727	1735	1751	1786	1870	1983	2136	2333	2412	2277
25	1113	1149	1313	1514	1666	1789	1974	2184	2318	2172
30	487	516	614	837	1189	1504	1740	2005	2211	2007
35	389	400	422	455	617	991	1420	1760	2009	1801
40	365	374	392	407	428	562	984	1427	1703	1499
45	337	350	364	386	391	416	582	1050	1356	1180
50	306	311	327	345	353	367	402	696	970	854
55	269	274	282	291	307	320	335	460	655	576
60	216	216	223	238	250	259	269	311	409	364
65	156	156	159	170	181	197	198	204	245	220
70	111	111	108	107	116	121	120	121	139	130
75	72	67	65	59	54	58	59	58	70	68
80	5	6	9	14	15	15	18	22	28	29
85	0	1	1	1	1	2	2	3	6	6
90	0	0	0	0	0	0	0	0	0	0

ZONAL LUMEN:

Zone	Lumens
0-10	213
10-20	495
20-30	596
30-40	526
40-50	407
50-60	279
60-70	164
70-80	67
80-90	9

CCT SCALING FACTOR

CCT	2700K	3000K	3500K	4000K
80 CRI	-	0.97	1.00	1.02
90 CRI	0.79	0.83	0.86	0.88