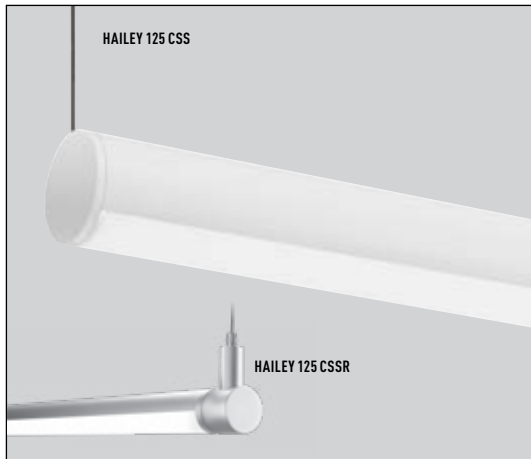


HAI-LED CSS

HAILEY 1.25", 2.25" & 3.25" Round Linear LED
(Cable Suspended or Cable Suspended Rotational)

TYPE: _____
JOB NAME: _____



LED LIGHT OUTPUT SYSTEM

- HLO (High Lumen Output) & SLO (Standard Lumen Output) providing efficient illumination.
- CLO (Custom Lumen Output) User specified lumen output & wattage. Consult factory for details.
- Rated life of L70 > 60,000 hours based on LED testing per LM-80-08 and projected values using IESNA TM21-11

LENS

Impact resistant co-extruded lens with highly reflective internal cavity

CONSTRUCTION

Fixture body is constructed of heavy gauge extruded aluminum. Fixtures are available in 2', 3', 4', 6' and 8' nominal lengths (6' and 8' not available for 125). Continuous run mounting available featuring internal adjoining mounting hardware enabling straight and precise rows. See installation section for more details.

MOUNTING

(CSS) Cable Suspension System field-adjustable 1/16" aircraft cable, (CSS-R) Rotational Cable Suspension System field-adjustable 1/16" aircraft cable and provides 361° directional and lockable aiming.

FINISHES

Available in matte aluminum (MA), powder coat flat black (FB) or powder coat matte white (MW). Custom powder coat finishes available, consult factory for options and lead time.

DIMMING

- 0-10V Dimming 1%
- eldoLED 0-10V 0.1% or 1%
- Lutron® LDE1 Hi-Lume EcoSystem 1%
- DALI Dimming 1%

REMOTE DRIVER BOX

Remote box included. Above ceiling access required for servicing. Formed aluminum construction with knock-outs. Consult factory for maximum recommended mounting distance.

LISTING / WARRANTY

- 5-Year Limited Warranty
- US and Canada listed for dry/damp locations.



ELECTRICAL DATA: (Data Based On 4000K/80CRI Configuration)

Light Output	SLO			HLO		
	lm/ft	W/ft	lm/W	lm/ft	W/ft	lm/W
HAI-LED-125 (FW)	354	2.9	121.9	706	5.9	119.7
HAI-LED-225 (FW)	349	2.9	120.4	698	5.9	118.2
HAI-LED-325 (FW)	464	4.4	105.5	893	9	99.2

Wattage includes driver and LED Module consumption.
Delivered lumen output will vary depending on CCT, CRI and Optic selection.

ORDERING CODE: (Example: HAI-LED-125-SLO-309-4-SC-FW-120-D1-CSS-DR-36-W-STND-MW)

1: Model	2: Light Output	3: CCT/CRI	4: Nominal Length	5: Housing Finishes	6: Lens	7: Voltage
HAI-LED-125 ¹ (1.25" Aperture)	-SLO (Standard Lumen Output)	-279 (2700K / 90CRI)	-2 (2ft)	-MA (Matte Aluminum)	-FW (Frosted White)	-120 (120V)
	-HLO (High Lumen Output)	-30 (3000K / 80CRI)	-3 (3ft)	-MW (Powder Coat, Matte White)		-277 (277V)
HAI-LED-225-IB (2.25" Aperture, Integral)	-CLO ² (Custom Lumen Output)	-309 (3000K / 90CRI)	-4 (4ft)	-FB (Powder Coat, Flat Black)		-347 ⁴ (347V)
		-35 (3500K / 80CRI)	-6 ¹ (6ft)	-CUP ⁴ (Custom Powder Coat)		
HAI-LED-225-RB (2.25" Aperture, Remote)		-359 (3500K / 90CRI)	-8 ¹ (8ft)			
		-40 (4000K / 80CRI)	-CR ³ (Continuous Run, note length in feet)			
HAI-LED-325 (3.25" Aperture)		-409 (4000K / 90CRI)				

8: Driver	9: Mounting Options	10: Orientation	11: Cable Length	12: Power Cord Color	13: Canopy Option
-D1 (0-10V Dimming 1%)	-CSS (Cable Suspended)	-DR (Direct)	-36 (36" Cable)	-W (White Cord)	-STND (Bracket Bar w/ 5" Round Canopy)
-ED10V1 (eldoLED 0-10V 1%)	-CSSR ⁶ (Cable Suspended, Rotational)	-IN (Indirect)	-72 (72" Cable)	-B (Black Cord)	-NC (No Canopy w/ 1/4"-20 Side Exit Cable Gripper)
-ED10V01 (eldoLED 0-10V 0.1%)		-R ⁶ (Rotational w/ 1.25" Knuckle)	-120 (120" Cable)	-G (Gray Cord)	-CU ⁴ (Custom, Consult Factory)
-HL (LDE1 Lutron Hi-Lume Ecosystem 1%)		-R2 ⁶ (Rotational w/ 2.25" Knuckle)			
-DALI (DALI Dimming 1%)		-R3 ⁶ (Rotational w/ 3.25" Knuckle)			

14: Canopy Finish	15: Options
-MW (Matte White)	EM ⁶ (Emergency Battery Pack)
-SMT (Silver Matte Textured)	
-CUP ⁴ (Custom, Consult Factory)	

- NOTES
1. HAILEY 125 not available in 6' or 8' lengths
 2. Consult factory, available with D1 options only
 3. Specify lengths in nominal feet
 4. Consult factory for options & lead times
 5. Lutron LTEA2W 120V only
 6. Rotational knuckle is color matched to housing finish

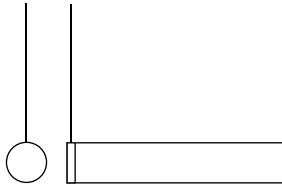
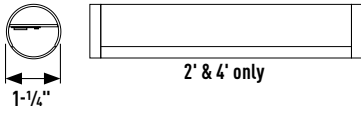
HAI-LED CSS

HAILEY 1.25", 2.25" & 3.25" Round Linear LED
(Cable Suspended or Cable Suspended Rotational)

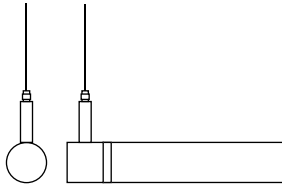
TYPE: _____
JOB NAME: _____

FIXTURE DIMENSIONS:

HAILEY 125

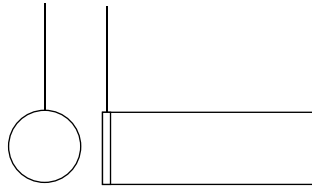
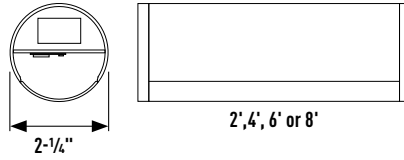


HAILEY 125 CSS

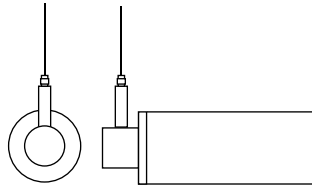


HAILEY 125 CSS-R w/ 1.25" Knuckle

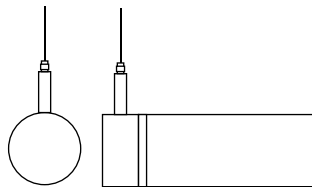
HAILEY 225



HAILEY 225 CSS

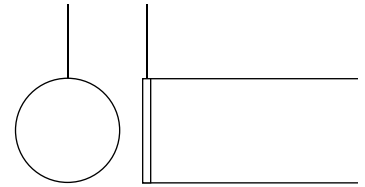
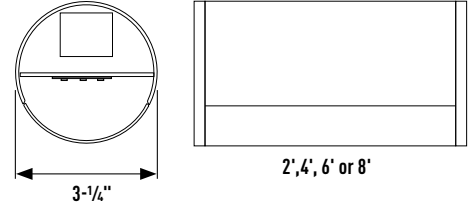


HAILEY 225 CSS-R w/ 1.25" Knuckle

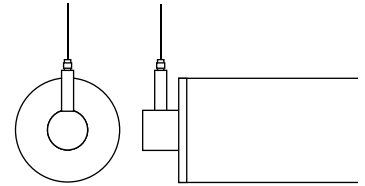


HAILEY 225 CSS-R w/ 2.25" Knuckle

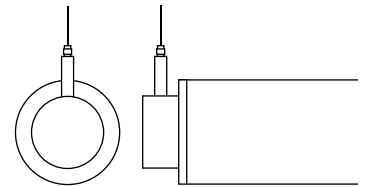
HAILEY 325



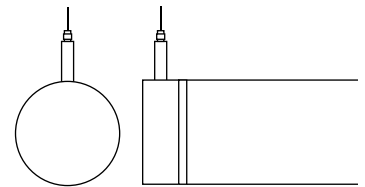
HAILEY 325 CSS



HAILEY 325 CSS-R w/ 1.25" Knuckle



HAILEY 325 CSS-R w/ 2.25" Knuckle



HAILEY 325 CSS-R w/ 3.25" Knuckle

REMOTE DRIVER BOX DIMENSIONS:

(Can be surface mounted in any orientation)

BB23B: Standard Driver Ballast Box (23" x 3" x 2")

BB28B: Standard Driver Ballast Box (28" x 3" x 2")

