

JAKE LED

4.00" Wall Graze
Trim/Trimless

Recessed Linear LED Fixture



JAKE LED Wall Graze is a recessed linear luminaire comprised of various LED light source options that delivers high performing even illumination that reveals and accentuates texture with shadowing into the desired area. JAKE LED Wall Graze can be installed in gypsum ceilings or walls with either a 3/4" Trim (TR) or Trimless (TL) mud-over flange. T-grid models for drop ceilings are also available.

JAKE LED Light Outputs and dimmable driver components, when combined together, provide optimal LED lighting system capabilities.

Available in nominal lengths from 2' - 8' as well as continuous run.



Made in the USA



UL and c-UL listed for dry and damp locations.



FIXTURE SPECIFICATIONS

Construction

Fixture body is constructed of heavy gauge extruded aluminum. Fixtures are available in nominal lengths of 2 - 8 feet, and continuous run lengths.

Mounting

Recessed linear fixture for drywall or wood installations in either a Flush Lens (FLS) or a 3" Regress Lens (REG3). Available as continuous run mount. See installation information for specific details regarding installation guidelines. Various mounting clips available for ease of installation.

Finishes

Trim (TR) is standard Satin Clear (SC) anodized. Trimless (TL) is standard Mill finish. Custom powder coat finishes available - consult factory.

LED Light Output System

LED Light Outputs are available as HLO (High Lumen Output) and SLO (Standard Lumen Output) providing efficient illumination. CLO (Custom Lumen Output) allows for end user specified lumen output or tailored wattage consumption for certain models. Consult factory for details.

Dimming

Dimming is available with a variety of control protocols and options. Consult factory for availability and specifications.

Custom and Mods

We proudly specialize in manufacturing custom and modified luminaires and have the ability to modify most of our standard fixtures. Please contact factory with any inquiries.

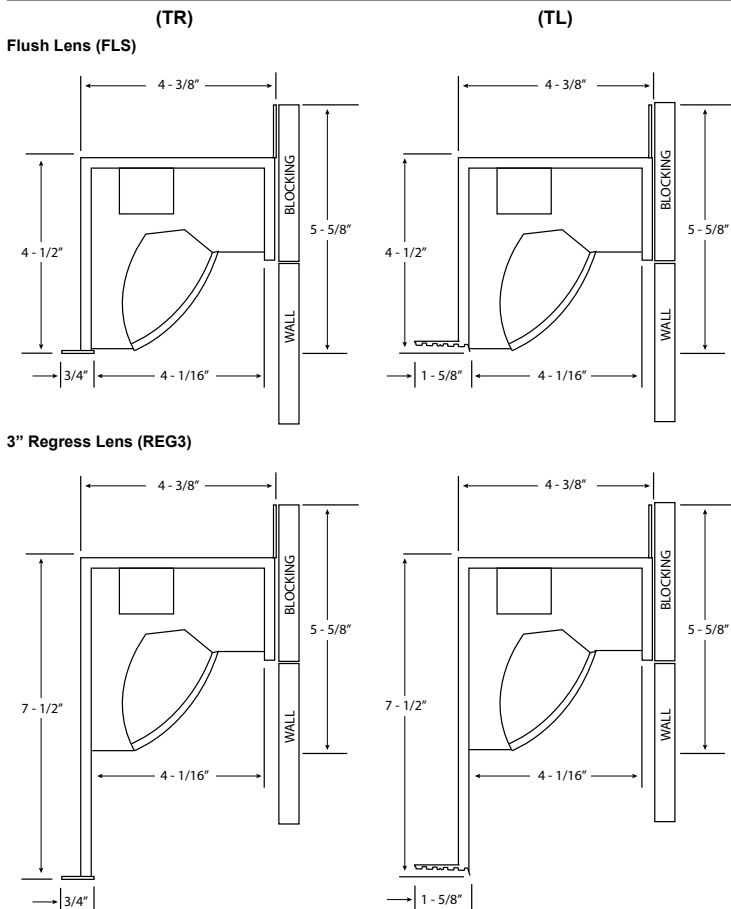
Type: Job Name:

Recessed Linear LED Fixture

SPECIFICATION CODE

| model | trim style | light Output | color temp | length | voltage | driver | option | option |
|--|----------------------------------|--------------------------------|------------|---------------------|----------------------------------|---------------------|----------------------------------|--------|
| Model | Trim Style ² | Light Output | Color Temp | Nominal Length | Voltage | Driver | Options | |
| JAK-LED-WG-FLS-400 - Flush Lens | TR - 3/4" flanged trim | SLO - | 27 - 2700K | 2 ⁸ - 2' | 120 | D1 - 1% (nom) 0-10V | Finishes ² | |
| | | Standard | 30 - 3000K | 3 ⁸ - 3' | 277 | HZA2 ⁴ - | FB - Flat Black | |
| | | Lumen Output | 35 - 3500K | 4 ⁸ - 4' | 347 ⁵ | LTEA2W Lutron | MW - Matte White | |
| JAK-LED-WG-REG3-400 - 3" Regress Lens | TL - Trimless Mud-over flange | HLO - | 40 - 4000K | 6 ⁸ - 6' | | H-Lume 1%, 2 wire | CUP - Custom powder coat | |
| | | High | | 8 ⁸ - 8' | | HL - | Mounting Options ³ | |
| | | Lumen Output | | | | LDE1 Lutron | HB - Hanger Bracket | |
| | | CLO ⁵ - | | | | Hi-Lume 1% | | |
| | | Custom | | | EcoSystem | | | |
| | | Lumen Output | | | DALI - DALI | | CP ⁶ - Chicago Plenum | |
| | | CLO Calculator | | | | | | |
| | | | | | CR ⁸ - Continuous Run | | | |
| | | | | | WW ⁷ - Wall-to-Wall | | | |
| | | | | | 1WL ⁹ - 1 Wall Left | | | |
| | | | | | 1WR ⁹ - 1 Wall Right | | | |
| | | | | | MTR ¹⁰ - Miter | | | |

Dimensions



NOTES

- specify lengths in nominal feet
- TR standard is Satin Clear, TL standard is Mill Finish. see [option sheet](#) for custom finishes
- see [instruction sheet](#) for mounting info
- 120V only
- available for D1, D10 drivers only
- compliant with CCEA Chicago Plenum code requirements
- exact measurements between wall surfaces required
- fixture is positioned off the wall and includes all trim/flange pieces
- elevation view facing fixture side of wall (1) wall with (1) trim/flange piece
- see [Miter worksheet](#) for details

Fixture Performance

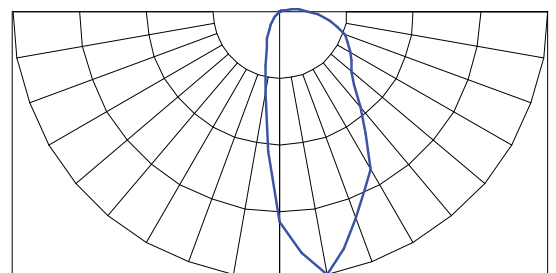
JAK-LED-WG-FLS-400 (4000K)

SLO - 114.3 lm/watt delivered @ 4.4 w/ft fixture input watts, 503 lm/ft.
HLO - 107.4 lm/watt delivered @ 9 w/ft fixture input watts, 967 lm/ft.
CLO - refer to [CLO Calculator](#)
400 LED [supplement info](#)

JAK-LED-WG-REG3-400 (4000K)

SLO - 114.3 lm/watt delivered @ 4.4 w/ft fixture input watts, 503 lm/ft.
HLO - 107.4 lm/watt delivered @ 9 w/ft fixture input watts, 967 lm/ft.
CLO - refer to [CLO Calculator](#)
400 LED [supplement info](#)

Photometrics



V-0519