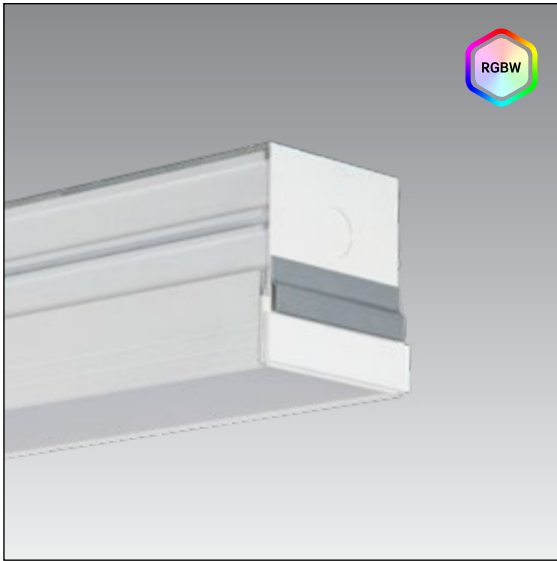


JAK-LED-325 w/ RGBW

Jake RGBW 3.25" T-Grid Recessed Linear

TYPE:

JOB NAME:



| Light Output | CCT/CRI | Nominal Delivered Lumens Per Foot | Watts Per Foot |
|-----------------|----------------|-----------------------------------|----------------|
| RGBW-700 | 3000K / 90 CRI | 700lm/ft | 8.7W/ft |

Wattage includes driver and LED Module consumption. Delivered lumen output will vary depending on CCT, CRI and Optic selection.

CONSTRUCTION

Heavy gauge square extruded aluminum housing. 1/4" thick precision-machined aluminum end-caps. Extruded acrylic lenses

LIGHT OUTPUT SYSTEM

High output RGB colors along side white. Introducing a white spectrum with saturated sharp RGB tones working together to create soft pastel tones or different tones of white enriched with RGB colors.

- 3000K/90 CRI - 700 lm/ft @ 8.7W, (15W max w/ RGB+W)

DIMMING

Available with DMXR or DALI

LENS

- Impact resistant co-extruded lens with highly reflective internal cavity
- (HE) High efficiency lens provides optimal performance with even and continuous diffusion
- (FBLSS) Flat Blade Louver Semi-Specular with diffusing layer.

PERFORMANCE OPTICS

(BW) Batwing, (AS) 15° Asymmetric, and (E70) 70° Elliptical.

FIXTURE LENGTH

- Nominal Lengths: 2', 4', 6' & 8'
- Continuous or mitered runs are only available in "even length," and must be specified in feet. Consult factory for lead times.

MOUNTING

Recessed linear fixture for drywall or wood ceiling installations, or for mounting on the wall on a vertical plane. Available as continuous run mount. See installation information for specific details regarding installation guidelines. Various mounting clips provided for ease of installation.

FINISHES

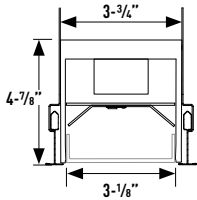
Available finishes includes powder coated Matte White (MW) and Flat Black (FB). Consult factory for custom powder coat finishes.

LISTING / WARRANTY

- 5-Year Limited Warranty
- US and Canada listed for wet location, covered canopy.



DIMENSIONS:



ORDERING CODE: (Example: JAK-LED-325-LT9-RGBW-700-6-BW-UNV-DMXR-CU)

| 1: Model | 2: Trim Style | 3: Light Output | 4: Nominal Length | 5: Lens | 6: Voltage |
|------------------------------------|---|------------------------------------|---|---|-------------------------------------|
| JAK-LED-325 (Jake 3.25") | -LT9 1/16" Exposed Lay-In | -RGBW-700 (700 lm/ft @ 15W) | -2 (2ft) | -HE (High Efficiency) | -UNV (Universal 120-277V) |
| | -LT15 15/16" Exposed Lay-In | | -4 (4ft) | -FW (Frosted White) | |
| | -TT9 1/16" Tegular | | -6 (6ft) | -RLW (Reveal Frosted White 3/8 Extended) | |
| | -TT15 15/16" Tegular | | -8 (8ft) | -BW (Batwing 115°) | |
| | -ITA 1/16" Interlude® | | -CR_1 (Continuous Run) | -AS (Asymmetric 15°) | |
| | -ST9 1/16" Slot Grid | | -MTR-R^{1,2} (Miter Run) | -E70 (Elliptical 70°) | |
| | | | | -FBLSS (Flat Blade Louver Semi-Specular) | |
| 7: Dimming | 8: Trim Finish | | | | |
| -DMXR (DMX512 RDM 0.1%) | blank (Matte White, Standard) | | | | |
| -DALI (DALI) | -CU³ (Custom Powder Coat) | | | | |

Notes

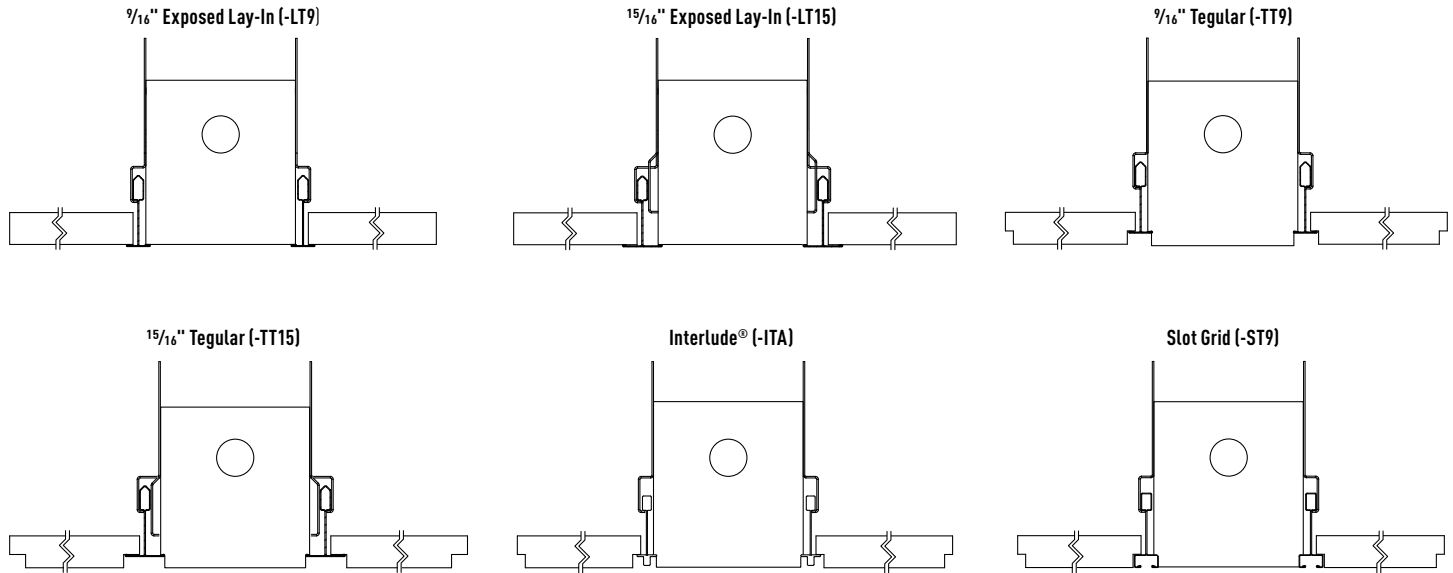
- Continuous or mitered runs are only available in "even length," and must be specified in feet. Consult factory for lead times.
- See [miter worksheet](#) for specification (detailed drawing required)
- Consult factory for options and lead times

JAK-LED-325 w/ RGBW

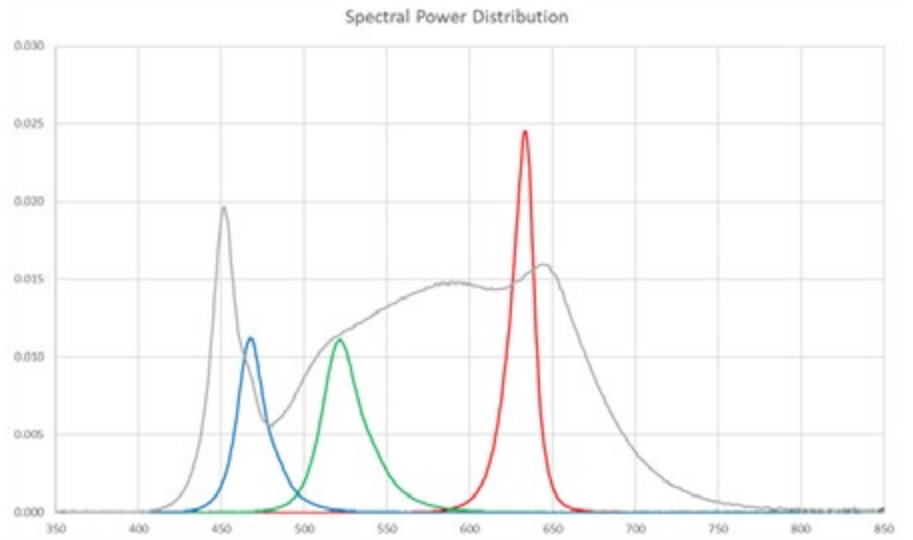
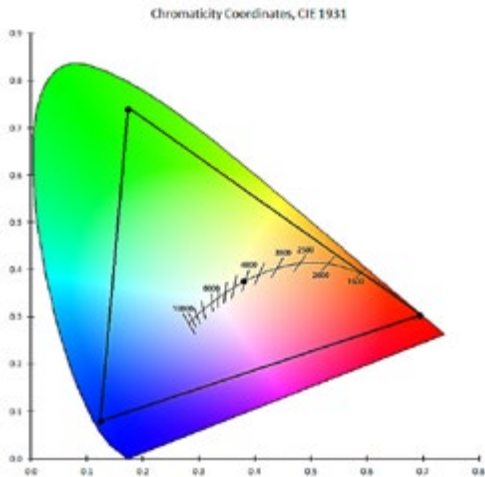
Jake RGBW 3.25" T-Grid Recessed Linear

TYPE: _____
 JOB NAME: _____

T-Grid Trim Styles:



| NOMINAL DELIVERED LUMEN BREAKDOWN | | | | | |
|-----------------------------------|-------------|-------------|---------------|--------------|------------------|
| Optic Type | White 3000K | Red (620nm) | Green (530nm) | Blue (470nm) | Wattage Per Foot |
| High Efficiency (HE) | 694 lm/ft | 67 lm/ft | 145 lm/ft | 17 lm/ft | 15 W/ft |
| Batwing (BW) | 630 lm/ft | 61 lm/ft | 132 lm/ft | 15 lm/ft | 15 W/ft |
| Asymmetric (AS) | 710 lm/ft | 69 lm/ft | 148 lm/ft | 17 lm/ft | 15 W/ft |
| Elliptical (E70) | 688 lm/ft | 66 lm/ft | 144 lm/ft | 17 lm/ft | 15 W/ft |
| Frosted White (FW) | 584 lm/ft | 56 lm/ft | 122 lm/ft | 14 lm/ft | 15 W/ft |



SPECIFICATION SHEET L/M-0531-24 P-7

JAK-LED-325 w/ RGBW

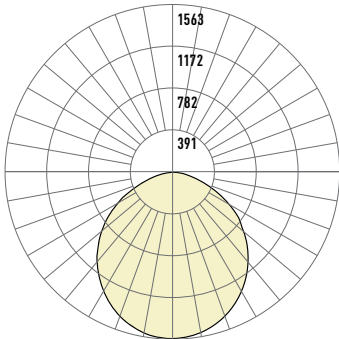
Jake RGBW 3.25" T-Grid Recessed Linear

TYPE:

JOB NAME:

JAK-LED-325-TR-RGBW-700-4-HE

PHOTOMETRIC CURVE:



Direct (AS): 700 lm/ft

Wattage: 34.7

Total Lumens (4ft): 2777 lm

CCT/CRI: 3000K / 90CRI

Efficacy: 80 lm/W

LUMINANCE DATA (cd/sq.m):

| Angle In Degrees | Average 0-Deg | Average 45-Deg | Average 90-Deg |
|------------------|---------------|----------------|----------------|
| 45 | 9912 | 10129 | 10442 |
| 55 | 8981 | 9283 | 9680 |
| 65 | 7342 | 7758 | 8351 |
| 75 | 4735 | 5149 | 5885 |
| 85 | 2496 | 2593 | 2700 |

CANDELA DISTRIBUTION:

| | 0 | 23 | 45 | 68 | 90 | 113 | 135 | 158 | 180 | 203 |
|----|------|------|------|------|------|------|------|------|------|------|
| 0 | 1072 | 1072 | 1072 | 1072 | 1072 | 1072 | 1072 | 1072 | 1072 | 1072 |
| 1 | 1072 | 1071 | 1072 | 1073 | 1074 | 1074 | 1074 | 1073 | 1072 | 1071 |
| 2 | 1070 | 1070 | 1071 | 1072 | 1073 | 1074 | 1074 | 1073 | 1071 | 1070 |
| 3 | 1069 | 1068 | 1069 | 1071 | 1072 | 1073 | 1073 | 1072 | 1071 | 1070 |
| 4 | 1066 | 1066 | 1067 | 1069 | 1071 | 1071 | 1072 | 1071 | 1069 | 1068 |
| 5 | 1064 | 1063 | 1065 | 1067 | 1069 | 1070 | 1070 | 1069 | 1068 | 1067 |
| 6 | 1060 | 1060 | 1062 | 1064 | 1066 | 1067 | 1068 | 1067 | 1065 | 1064 |
| 7 | 1057 | 1057 | 1059 | 1061 | 1064 | 1065 | 1065 | 1064 | 1063 | 1062 |
| 8 | 1052 | 1053 | 1055 | 1058 | 1061 | 1062 | 1062 | 1061 | 1059 | 1059 |
| 9 | 1048 | 1048 | 1051 | 1055 | 1057 | 1059 | 1059 | 1057 | 1056 | 1055 |
| 10 | 1043 | 1043 | 1047 | 1051 | 1054 | 1055 | 1055 | 1053 | 1052 | 1051 |
| 11 | 1037 | 1038 | 1042 | 1046 | 1049 | 1051 | 1051 | 1049 | 1047 | 1047 |
| 12 | 1031 | 1032 | 1036 | 1041 | 1045 | 1046 | 1046 | 1044 | 1042 | 1042 |
| 13 | 1025 | 1026 | 1031 | 1036 | 1039 | 1041 | 1041 | 1039 | 1037 | 1036 |
| 14 | 1018 | 1020 | 1025 | 1030 | 1034 | 1036 | 1036 | 1033 | 1031 | 1030 |
| 15 | 1011 | 1013 | 1018 | 1023 | 1028 | 1030 | 1030 | 1026 | 1024 | 1024 |
| 16 | 1004 | 1005 | 1011 | 1017 | 1021 | 1023 | 1023 | 1020 | 1018 | 1017 |
| 17 | 996 | 998 | 1003 | 1010 | 1014 | 1016 | 1016 | 1013 | 1011 | 1010 |
| 18 | 988 | 990 | 996 | 1002 | 1007 | 1009 | 1009 | 1005 | 1003 | 1003 |
| 19 | 979 | 981 | 987 | 994 | 1000 | 1002 | 1001 | 998 | 995 | 995 |
| 20 | 970 | 972 | 979 | 986 | 992 | 994 | 993 | 989 | 986 | 987 |
| 21 | 960 | 963 | 970 | 977 | 983 | 985 | 984 | 981 | 978 | 978 |
| 22 | 951 | 954 | 961 | 969 | 975 | 977 | 975 | 972 | 968 | 969 |
| 23 | 941 | 944 | 951 | 959 | 966 | 968 | 966 | 962 | 959 | 960 |
| 24 | 930 | 933 | 941 | 950 | 956 | 958 | 956 | 952 | 949 | 950 |
| 25 | 919 | 923 | 931 | 940 | 947 | 948 | 946 | 942 | 939 | 940 |
| 26 | 908 | 912 | 920 | 930 | 936 | 938 | 936 | 932 | 928 | 929 |
| 27 | 897 | 900 | 909 | 919 | 926 | 928 | 925 | 921 | 917 | 918 |
| 28 | 885 | 889 | 898 | 908 | 915 | 917 | 914 | 910 | 906 | 907 |
| 29 | 874 | 877 | 886 | 897 | 904 | 906 | 903 | 898 | 894 | 895 |
| 30 | 861 | 865 | 874 | 885 | 892 | 894 | 891 | 886 | 882 | 884 |
| 32 | 836 | 840 | 850 | 861 | 869 | 870 | 867 | 861 | 857 | 859 |
| 34 | 811 | 814 | 824 | 835 | 843 | 845 | 841 | 835 | 832 | 833 |
| 36 | 784 | 787 | 797 | 809 | 817 | 819 | 815 | 809 | 805 | 806 |
| 38 | 756 | 759 | 769 | 781 | 790 | 791 | 787 | 781 | 777 | 778 |
| 40 | 727 | 731 | 741 | 753 | 761 | 763 | 758 | 752 | 748 | 750 |
| 42 | 697 | 701 | 711 | 723 | 731 | 733 | 728 | 723 | 718 | 720 |
| 44 | 666 | 671 | 680 | 692 | 701 | 702 | 697 | 695 | 688 | 689 |
| 46 | 634 | 638 | 649 | 660 | 669 | 671 | 666 | 662 | 656 | 658 |
| 48 | 601 | 606 | 616 | 628 | 636 | 638 | 633 | 627 | 624 | 625 |
| 50 | 567 | 572 | 583 | 594 | 603 | 604 | 599 | 593 | 590 | 592 |
| 54 | 496 | 500 | 512 | 525 | 533 | 535 | 530 | 524 | 520 | 523 |
| 58 | 423 | 427 | 438 | 452 | 460 | 462 | 457 | 451 | 447 | 450 |
| 63 | 327 | 332 | 343 | 357 | 366 | 367 | 362 | 354 | 350 | 353 |
| 68 | 229 | 234 | 246 | 260 | 270 | 270 | 263 | 253 | 249 | 252 |
| 73 | 140 | 144 | 153 | 165 | 175 | 174 | 166 | 158 | 155 | 157 |
| 78 | 74 | 75 | 79 | 85 | 91 | 91 | 87 | 83 | 82 | 83 |
| 84 | 24 | 24 | 25 | 25 | 26 | 27 | 27 | 26 | 26 | 26 |
| 90 | 3 | 3 | 3 | 3 | 3 | 3 | 3 | 3 | 3 | 3 |

ZONAL LUMEN:

| Zone | Lumens |
|-------|--------|
| 0-10 | 101 |
| 10-20 | 288 |
| 20-30 | 432 |
| 30-40 | 512 |
| 40-50 | 518 |
| 50-60 | 368 |
| 60-70 | 342 |
| 70-80 | 172 |
| 80-90 | 45 |

JAK-LED-325 w/ RGBW

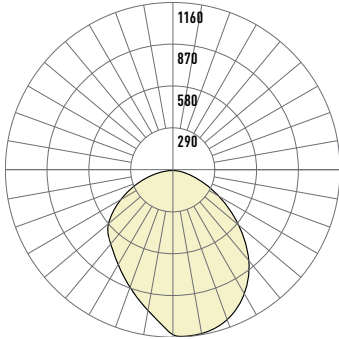
Jake RGBW 3.25" T-Grid Recessed Linear

TYPE:

JOB NAME:

JAK-LED-325-TR-RGBW-700-4-AS

PHOTOMETRIC CURVE:



Direct (AS): 700 lm/ft

Wattage: 34.7

Total Lumens (4ft): 2751 lm

CCT/CRI: 3000K / 90CRI

Efficacy: 79 lm/W

LUMINANCE DATA (cd/sq.m):

| Angle In Degrees | Average 0-Deg | Average 45-Deg | Average 90-Deg |
|------------------|---------------|----------------|----------------|
| 45 | 10861 | 11902 | 9257 |
| 55 | 9236 | 10627 | 7128 |
| 65 | 7182 | 8553 | 4715 |
| 75 | 4079 | 5584 | 3368 |
| 85 | 1887 | 2396 | 1838 |

CANDELA DISTRIBUTION:

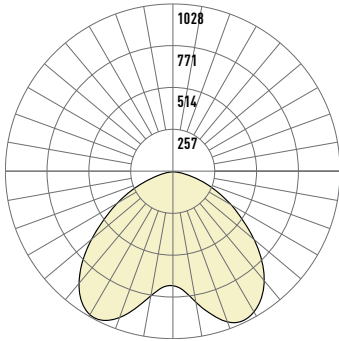
| | 0 | 22.5 | 45.0 | 67.5 | 90.0 | 112.5 | 135.0 | 157.5 | 180.0 | 202.5 |
|----|------|------|------|------|------|-------|-------|-------|-------|-------|
| 0 | 1141 | 1141 | 1141 | 1141 | 1141 | 1141 | 1141 | 1141 | 1141 | 1141 |
| 5 | 1160 | 1156 | 1150 | 1142 | 1129 | 1106 | 1077 | 1058 | 1054 | 1066 |
| 15 | 1133 | 1130 | 1125 | 1116 | 1082 | 970 | 957 | 936 | 927 | 937 |
| 25 | 1058 | 1061 | 1058 | 1049 | 958 | 883 | 850 | 814 | 804 | 813 |
| 35 | 911 | 926 | 948 | 942 | 775 | 765 | 723 | 704 | 706 | 701 |
| 45 | 712 | 733 | 781 | 793 | 607 | 600 | 589 | 606 | 635 | 600 |
| 55 | 491 | 510 | 565 | 599 | 379 | 433 | 439 | 494 | 504 | 490 |
| 65 | 282 | 293 | 335 | 380 | 185 | 276 | 281 | 326 | 332 | 325 |
| 75 | 98 | 107 | 134 | 156 | 81 | 122 | 123 | 140 | 145 | 141 |
| 85 | 15 | 16 | 19 | 18 | 15 | 17 | 18 | 20 | 21 | 21 |
| 90 | 4 | 4 | 4 | 4 | 4 | 4 | 4 | 4 | 4 | 4 |

ZONAL LUMEN:

| Zone | Lumens |
|-------|--------|
| 0-10 | 106 |
| 10-20 | 294 |
| 20-30 | 437 |
| 30-40 | 514 |
| 40-50 | 515 |
| 50-60 | 434 |
| 60-70 | 293 |
| 70-80 | 133 |
| 80-90 | 26 |

JAK-LED-325-TR-RGBW-700-4-BW

PHOTOMETRIC CURVE:



Direct (BW): 700 lm/ft

Wattage: 34.7

Total Lumens (4ft): 2519 lm

CCT/CRI: 3000K / 90CRI

Efficacy: 73 lm/W

LUMINANCE DATA (cd/sq.m):

| Angle In Degrees | Average 0-Deg | Average 45-Deg | Average 90-Deg |
|------------------|---------------|----------------|----------------|
| 45 | 11513 | 11019 | 6345 |
| 55 | 9552 | 9779 | 6195 |
| 65 | 7175 | 7735 | 5812 |
| 75 | 4486 | 4938 | 4486 |
| 85 | 2298 | 2439 | 2174 |

CANDELA DISTRIBUTION:

| | 0 | 23 | 45 | 68 | 90 | 113 | 135 | 158 | 180 | 203 |
|----|------|-----|-----|-----|-----|-----|-----|-----|------|-----|
| 5 | 752 | 742 | 727 | 711 | 701 | 699 | 705 | 712 | 714 | 710 |
| 15 | 922 | 889 | 806 | 709 | 658 | 680 | 756 | 832 | 863 | 831 |
| 25 | 1013 | 984 | 872 | 685 | 585 | 648 | 830 | 974 | 1014 | 971 |
| 30 | 992 | 972 | 874 | 662 | 543 | 625 | 850 | 996 | 1026 | 991 |
| 32 | 974 | 957 | 867 | 649 | 526 | 615 | 852 | 992 | 1017 | 987 |
| 34 | 952 | 938 | 856 | 636 | 508 | 603 | 850 | 982 | 1001 | 976 |
| 36 | 926 | 914 | 841 | 620 | 491 | 589 | 844 | 965 | 978 | 959 |
| 38 | 895 | 886 | 822 | 603 | 475 | 575 | 833 | 941 | 949 | 935 |
| 40 | 860 | 854 | 798 | 585 | 458 | 559 | 817 | 912 | 915 | 905 |
| 42 | 822 | 820 | 771 | 565 | 441 | 543 | 796 | 877 | 876 | 870 |
| 44 | 778 | 783 | 740 | 543 | 424 | 524 | 771 | 839 | 832 | 831 |
| 46 | 732 | 737 | 706 | 520 | 408 | 504 | 740 | 797 | 785 | 787 |
| 48 | 684 | 691 | 668 | 496 | 391 | 483 | 706 | 747 | 736 | 740 |
| 50 | 635 | 644 | 628 | 470 | 374 | 461 | 667 | 697 | 684 | 690 |
| 54 | 533 | 547 | 543 | 417 | 339 | 413 | 580 | 593 | 579 | 587 |
| 58 | 434 | 450 | 454 | 360 | 302 | 360 | 485 | 490 | 476 | 485 |
| 63 | 322 | 334 | 345 | 287 | 251 | 290 | 367 | 367 | 354 | 363 |
| 68 | 220 | 229 | 241 | 212 | 194 | 216 | 257 | 253 | 242 | 250 |
| 73 | 133 | 139 | 147 | 137 | 132 | 142 | 158 | 154 | 147 | 152 |
| 78 | 69 | 72 | 76 | 71 | 71 | 75 | 82 | 80 | 77 | 79 |
| 84 | 22 | 23 | 23 | 21 | 21 | 22 | 25 | 25 | 24 | 25 |
| 90 | 3 | 3 | 3 | 3 | 3 | 3 | 3 | 3 | 3 | 3 |

ZONAL LUMEN:

| Zone | Lumens |
|-------|--------|
| 0-10 | 69 |
| 10-20 | 220 |
| 20-30 | 378 |
| 30-40 | 488 |
| 40-50 | 507 |
| 50-60 | 351 |
| 60-70 | 313 |
| 70-80 | 154 |
| 80-90 | 40 |

JAK-LED-325 w/ RGBW

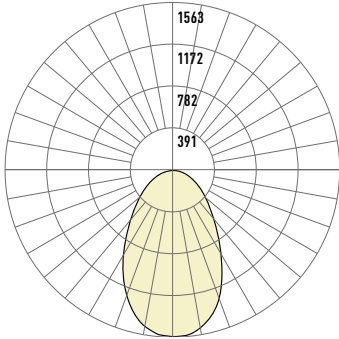
Jake RGBW 3.25" T-Grid Recessed Linear

TYPE:

JOB NAME:

JAK-LED-325-TR-RGBW-700-4-E70

PHOTOMETRIC CURVE:



Direct (AS): 700 lm/ft

Wattage: 34.7

Total Lumens (4ft): 2840 lm

CCT/CRI: 3000K / 90CRI

Efficacy: 82 lm/W

CANDELA DISTRIBUTION:

| | 0 | 22.5 | 45.0 | 67.5 | 90.0 | 112.5 | 135.0 | 157.5 | 180.0 | 202.5 |
|----|------|------|------|------|------|-------|-------|-------|-------|-------|
| 0 | 1563 | 1563 | 1563 | 1563 | 1563 | 1563 | 1563 | 1563 | 1563 | 1563 |
| 5 | 1554 | 1551 | 1549 | 1549 | 1549 | 1550 | 1550 | 1551 | 1552 | 1553 |
| 15 | 1414 | 1415 | 1421 | 1430 | 1441 | 1452 | 1463 | 1472 | 1479 | 1481 |
| 25 | 1097 | 1106 | 1127 | 1159 | 1202 | 1239 | 1276 | 1306 | 1324 | 1329 |
| 35 | 733 | 741 | 763 | 798 | 846 | 904 | 970 | 1025 | 1061 | 1071 |
| 45 | 492 | 495 | 504 | 520 | 545 | 582 | 629 | 681 | 719 | 729 |
| 55 | 326 | 328 | 331 | 338 | 349 | 366 | 390 | 410 | 428 | 434 |
| 65 | 208 | 208 | 210 | 213 | 217 | 223 | 231 | 240 | 249 | 252 |
| 75 | 103 | 103 | 103 | 104 | 105 | 107 | 109 | 112 | 115 | 117 |
| 85 | 18 | 18 | 18 | 19 | 19 | 20 | 20 | 20 | 19 | 17 |
| 90 | 3 | 3 | 3 | 3 | 3 | 3 | 3 | 3 | 3 | 3 |

ZONAL LUMEN:

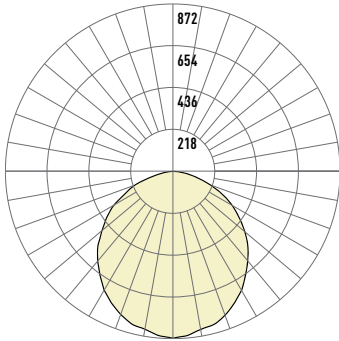
| Zone | Lumens |
|-------|--------|
| 0-10 | 147 |
| 10-20 | 407 |
| 20-30 | 560 |
| 30-40 | 564 |
| 40-50 | 463 |
| 50-60 | 339 |
| 60-70 | 224 |
| 70-80 | 111 |
| 80-90 | 24 |

LUMINANCE DATA (cd/sq.m):

| Angle In Degrees | Average 0-Deg | Average 45-Deg | Average 90-Deg |
|------------------|---------------|----------------|----------------|
| 45 | 7500 | 8593 | 11118 |
| 55 | 6130 | 6718 | 8152 |
| 65 | 5299 | 5621 | 6433 |
| 75 | 4291 | 4429 | 4855 |
| 85 | 2261 | 2384 | 2128 |

JAK-LED-325-TR-RGBW-700-4-FW

PHOTOMETRIC CURVE:



Direct (BW): 700 lm/ft

Wattage: 34.7

Total Lumens (4ft): 2335 lm

CCT/CRI: 3000K / 90CRI

Efficacy: 67 lm/W

CANDELA DISTRIBUTION:

| | 0 |
|----|-----|
| 0 | 872 |
| 5 | 864 |
| 10 | 841 |
| 15 | 829 |
| 20 | 798 |
| 25 | 762 |
| 30 | 719 |
| 35 | 665 |
| 40 | 611 |
| 45 | 556 |
| 50 | 490 |
| 55 | 424 |
| 60 | 363 |
| 63 | 318 |
| 65 | 278 |
| 68 | 245 |
| 70 | 206 |
| 73 | 167 |
| 75 | 132 |
| 78 | 95 |
| 80 | 64 |
| 83 | 39 |
| 85 | 19 |
| 88 | 7 |
| 90 | 0 |

ZONAL LUMEN:

| Zone | Lumens |
|-------|--------|
| 0-10 | 82 |
| 10-20 | 233 |
| 20-30 | 351 |
| 30-40 | 417 |
| 40-50 | 428 |
| 50-60 | 381 |
| 60-70 | 278 |
| 70-80 | 139 |
| 80-90 | 26 |

LUMINANCE DATA (cd/sq.m):

| Angle In Degrees | Average 0-Deg | Average 45-Deg | Average 90-Deg |
|------------------|---------------|----------------|----------------|
| 45 | 8476 | 8476 | 8476 |
| 55 | 7974 | 7974 | 7974 |
| 65 | 7091 | 7091 | 7091 |
| 75 | 5484 | 5484 | 5484 |
| 85 | 2381 | 2381 | 2381 |

SPECIFICATION SHEET L/M-0531-24 P-10

BIRCHWOOD LIGHTING | 725 Landwehr Road, Northbrook, IL 60062 | tel 714 550-7118 | fax 847 559-5505 | www.birchwoodlighting.com

For Birchwood Lighting's limited product warranty, go to www.birchwoodlighting.com. For a printed copy of the warranty, you may call 800 961-5321.

© 2024 Birchwood Lighting, Inc. All rights reserved. Note: This document is subject to change without notice.