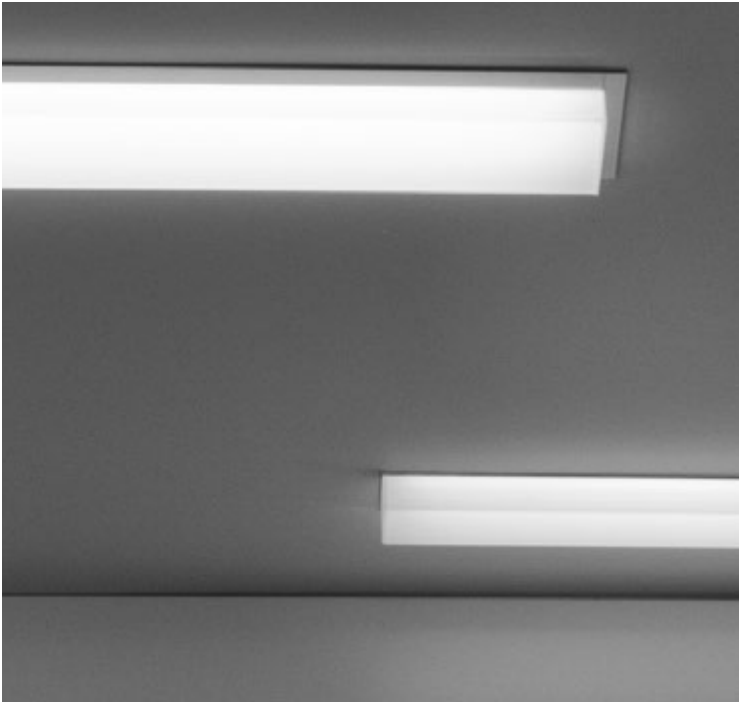


JILL LED

1.65" 2.25" 3.25" 5" 4TZ
T-Grid

Recessed Linear LED Fixture



Elusive and revealing: JILL LED combines the best of both qualities within a striking, slender aperture that almost dissolves into the ceiling, yet still unveils a subtle glow from the unique dropped-lens feature.

JILL LED 1.65", 2.25", 3.25", 5" can be installed in gypsum ceilings or walls with either a 3/4" Trim (TR) or Trimless (TL) mud-over flange. T-grid models for drop ceilings are also available. Acrylic dropped lenses allow even, and glowing illumination, while giving the impression of light beams on the surface of your application. With a smaller aperture, multiple installation options and the appearance of a floating lens, JILL offers beauty in plain sight.

JILL features LED Light Outputs and dimmable power supply components which combined together provide optimal LED lighting system capabilities and a 5 year system warranty.



UL & cUL Listed For Dry & Damp Locations.



Made In The USA

FIXTURE SPECIFICATIONS

Construction

Fixture body is constructed of heavy gauge extruded aluminum. Fixtures are available in nominal lengths of 2, 3, 4, 6 and 8 feet, and continuous run lengths. Lenses are extruded acrylic. End caps are (MEC) machined aluminum or (IEC) illuminated acrylic.

Options

Dimming driver, Emergency battery pack (EM). Custom Miter corners are available, Consult factory for compatibility, specifications and selection.

Acrylic Lens Options

(FW) Frosted White lens, (165, 225, 325, 500). (RLW) Reveal Frosted White lens with 3/8" extension, (225, 325 only). (FT) Prismatic Sided Frosted White (325 only).

LED Light Output System

LED Light Outputs are available as HLO (High Lumen Output) and SLO (Standard Lumen Output) providing efficient illumination. CLO (Custom Lumen Output) allows for end user specified lumen output or tailored wattage consumption for certain models. Consult factory for details.

Dimming

Dimming is available with a variety of control protocols and options. Consult factory for availability and specifications.

Finishes

Standard; Matte White is used for exposed fixture edges. Custom powder coat finishes available - consult factory.

Mounting

Recessed linear fixture for T-Grid ceiling installations. Available as continuous run mount. See installation information for specific details regarding installation guidelines. Various mounting options available for ease of installation.

Custom and Mods

We proudly specialize in manufacturing custom and modified luminaires and have the ability to modify most of our standard fixtures. Please contact factory with any inquiries.

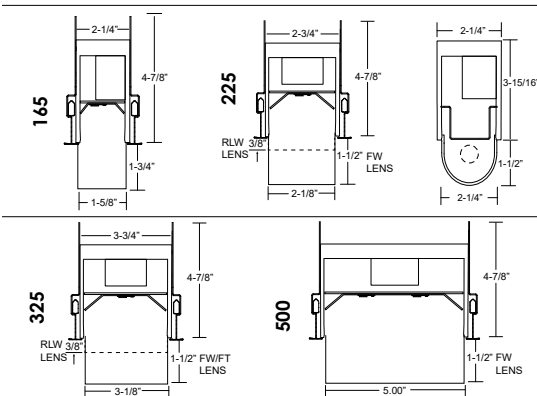
SPECIFICATION CODE

| Model | Trim Style | Light Output | Color Temp | Nominal Length | Lens | Lens End Cap | Voltage | Driver | Options | Options |
|---|--|--|--|---|--|---|--|---|---|---------|
| Model | Trim Style² | Light Output | Color Temp | Nominal Length | Lens | Lens End Cap | Voltage | Driver | Options | |
| JIL-LED-165 - 1.65" aperture | T-Grid Ceilings³ LT9 - 1/16" exposed lay-in | SLO - Standard Lumen Output | 27 - 2700K /90 CRI 30 - 3000K /80 CRI | 2 - 2' 3 - 3' 4 - 4' 6 - 6' 8 - 8' | FW - Frosted White | IEC - Illuminated End Cap | 120 277 347⁶ | D1 - 1% (nom) 0-10V | EM⁷ - Emergency battery pack | |
| JIL-LED-225 - 2.25" aperture | LT15 - 1/16" exposed lay-in TT9 - 1/16" Tegular ITA - Interlude [®] | HLO - High Lumen Output CLO⁵ - Custom Lumen Output | 309 - 3000K /90 CRI 35 - 3500K /80 CRI 359 - 3500K /90 CRI | CR₁ Continuous Run | TDW⁸ - Tear Drop Frosted White RLW¹⁰ - Reveal Frosted White 3/8" extended | MEC-MW Machined End Cap - Matte White MEC-FB Machined End Cap - Flat Black | 120 277 347⁶ | LTEA2W Lutron Hi-Lume 1%, 2 wire HL - LDE1 Lutron Hi-Lume 1% EcoSystem DALI - DALI | CP¹¹ - Chicago Plenum Finishes² CUP - Custom powder coat | |
| JIL-LED-325 - 3.25" aperture | ST9 - Slot Grid | CLO Calculator | 40 - 4000K /80 CRI 409 - 4000K /90 CRI | | FT⁴ - Prismatic Sided Frosted White | MEC-CUP Machined End Cap - Custom Powder Coat Color | | | | |
| JIL-LED-4TZ⁹ 3.25" aperture in 4" Armstrong [®] TechZone [®] | | | | | | | | | | |
| JIL-LED-500 - 5" aperture | | | | | | | | | | |
| JIL-LED-6TZ⁹ - 5.00" aperture in 6" Armstrong [®] Tech- Zone [®] | | | | | | | | | | |

Notes:

- Specify lengths in nominal feet
- Standard; matte white is used for exposed fixture edges, see [option sheet](#) for custom finishes
- See [t-grid sheet](#) for more details
- Only available in 325
- Available for D1, D10 drivers only
- 120V only
- Consult factory for EM options
- Only available in 225
- JIL-LED-4TZ only available with 1/16" trim style
- Only available in 225 and 325
- Compliant with CCEA Chicago plenum code requirements

Dimensions



165 (4000K FW lens)

SLO - 81 lm/watt delivered @ 2.9 w/ft fixture input watts, 236 lm/ft.
HLO - 80 lm/watt delivered @ 5.9 w/ft fixture input watts, 472 lm/ft.
CLO - refer to [CLO Calculator](#)
165 LED [supplement info](#)

225 (4000K FW lens)

SLO - 68 lm/watt delivered @ 4.4 w/ft fixture input watts, 301 lm/ft.
HLO - 67 lm/watt delivered @ 9.0 w/ft fixture input watts, 603 lm/ft.
CLO - refer to [CLO Calculator](#)
225 LED [supplement info](#)

325 (4000K FW lens)

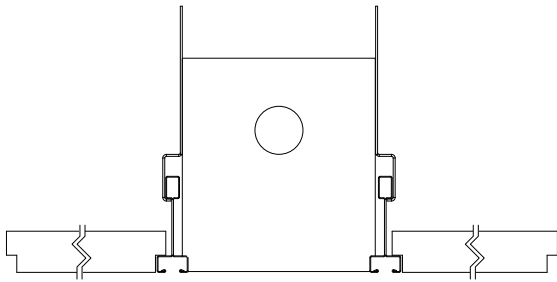
SLO - 79 lm/watt delivered @ 4.4 w/ft fixture input watts, 348 lm/ft.
HLO - 77 lm/watt delivered @ 9.0 w/ft fixture input watts, 697 lm/ft.
CLO - refer to [CLO Calculator](#)
325 LED [supplement info](#)

500 (4000K FW lens)

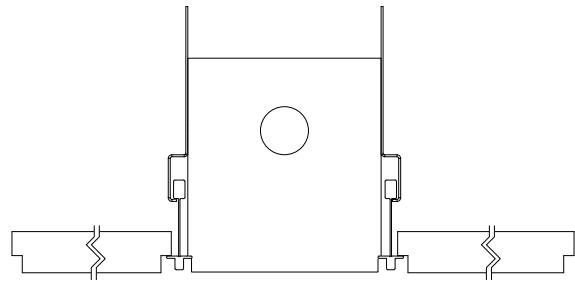
SLO - 90 lm/watt delivered @ 5.8 w/ft fixture input watts, 524 lm/ft.
HLO - 86 lm/watt delivered @ 12.1 w/ft fixture input watts, 1048 lm/ft.
CLO - refer to [CLO Calculator](#)
500 LED [supplement info](#)

T-GRID TRIM STYLES

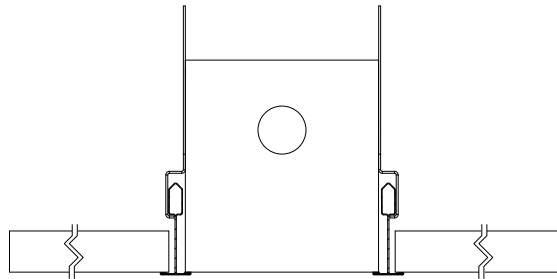
ST9 - 9/16 SLOT GRID



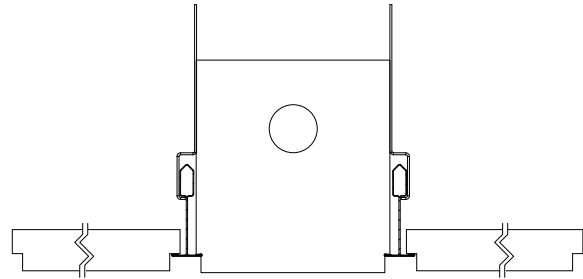
ITA - Interlude



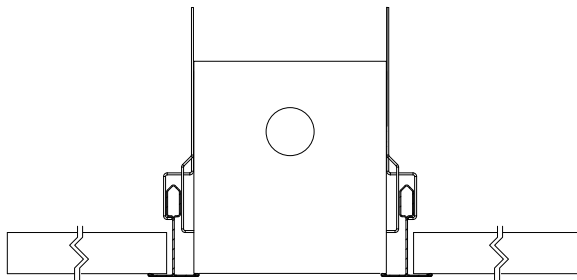
LT9 - 9/16 LAY-IN



TT9 - 9/16 TEGULAR



LT15 - 15/16 LAY-IN



TT15 - 15/16 TEGULAR

