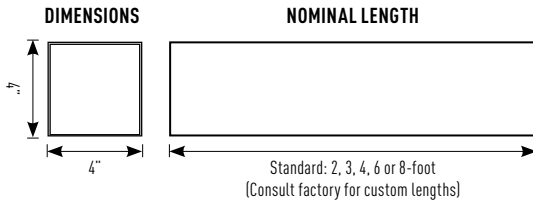
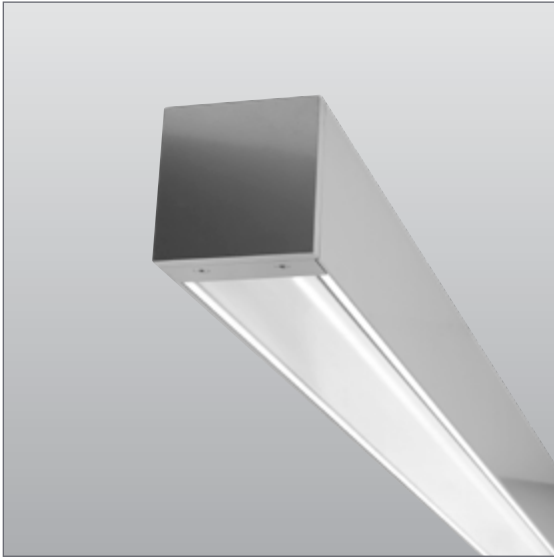


# VAN-LED-WW-400 / Ceiling Mount

VANESSA 4" Square LED Wall Wash Wet Location Luminaire w/ Ceiling Mount

TYPE:

JOB NAME:



Light Output	Nominal Delivered	System Wattage	Efficacy
Wall Wash / 4000K / 80 CRI			
SLO	245 lm/ft	4.4 W/ft	55.7 lm/W
HLO	471 lm/ft	9 W/ft	52.3 lm/W

Wattage includes driver and LED Module consumption. Delivered lumen output will vary depending on CCT, CRI and Optic selection.

## CONSTRUCTION

Heavy gauge square extruded aluminum housing. Precision-machined aluminum end-caps. Extruded acrylic lenses. Stainless steel hardware. Concealed weather-seal gaskets at end caps, lens and power entry on all stand-alone or continuous run fixtures with an IP65 rating. Feed points accept 1/2" trade size threaded wet location conduit fittings.

## MOUNTING OPTIONS

(CM) Ceiling Mount

## FINISHES

(SL) Silver Matte Texture, (MW) Matte White, or (FB) Flat Black. Other powder coat finishes available. Consult factory for details.

## LED LIGHT ENGINE SYSTEM

LED Light Engines are available as HLO (High Lumen Output) and SLO (Standard Lumen Output) providing efficient illumination. CLO (Custom Lumen Output) allows for end user specified lumen output or tailored wattage consumption for certain models. Consult factory for details.

## DIMMING

Dimming is available with a variety of control protocols and options. Consult factory for availability and specifications.

## FIXTURE LENGTH

Fixtures are available in 2', 3', 4', 6' and 8' nominal lengths. Continuous run mounting available featuring water-sealed gaskets within knock-outs for maintaining WL rating. See installation section for more details.

## ELECTRICAL

Rated for operation with ambient temperatures not to exceed 40°C. Use specification code "HAT" for applications where ambient will be between 40° and 45°C. The "HAT" option is a thermistor which will control internal temperatures so as not to exceed internal device maximum temperature. At certain temperature thresholds, fixture will dim light output to keep internal temperatures within the acceptable range.

## LISTING / WARRANTY

- 5-Year Limited Warranty
- UL listed to US and Canadian standards for wet locations
- IP65 Rated



ORDERING CODE: (Example: VAN-LED-WW-400-SLO-279-2-DR-CM-STND-SMT-120-D1-EM)

1: Model	2: Light Output	3: CCT/CRI	4: Nominal Length	5: Mounting	6: Power Feed	7: Finishes	8: Voltage	9: Dimming	10: Options
<b>VAN-LED-WW-400</b> (VANESSA 4" Square LED Wall Wash Wet Location Luminaire)	<b>-SLO</b> (Standard Lumen Output)	<b>-279</b> (2700K / 90CRI)	<b>-2</b> (2ft)	<b>-CM</b> (Ceiling Mount)	<b>-STND</b> (Standard)	<b>-SMT</b> (Silver Matte Textured, Powder Coat)	<b>-120</b> (120V)	<b>-D1</b> (0-10V Dimming 1%)	<b>-EM<sup>3</sup></b> (Emergency Backup)
	<b>-HLO</b> (High Lumen Output)	<b>-30</b> (3000K / 82CRI)	<b>-4</b> (4ft)						
	<b>-CLO</b> (Custom Lumen Output, See <a href="#">CLO Calculator</a> )	<b>-309</b> (3000K / 90CRI)	<b>-6'</b> (6ft)						
		<b>-35</b> (3500K / 82CRI)	<b>-8'</b> (8ft)						
		<b>-359</b> (3500K / 90CRI)	<b>-CR<sub>1</sub></b> (Continuous Run - Note length in feet)						
	<b>-40</b> (4000K / 82CRI)								
	<b>-409</b> (4000K / 90CRI)								
					<b>-EFL</b> (End Feed Left)	<b>-MW</b> (Matte White, Powder Coat)			<b>-HAT</b> (High Ambient Temperature)
					<b>-EFR</b> (End Feed Right)	<b>-FB</b> (Flat Black, Powder Coat)	<b>-347</b> (347V)		
					<b>-EF2</b> (End Feed Both)	<b>-CUP<sup>2</sup></b> (Custom Powder Coat, Consult Factory)			
					<b>-JBE</b> (J-Box Extender)				

## NOTES:

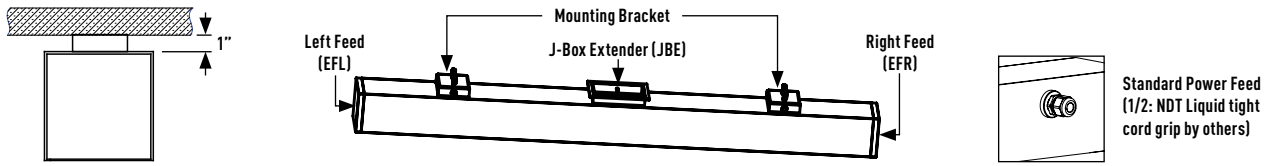
- Specify length in nominal feet
- Contact factory for custom powder coat finish
- EM's are remote mounted along with the test switch in a dry location, Consult factory for more info
- 6' & 8' Lengths are made up with (2) 3' fixtures or (2) 4' fixtures respectively

# VAN-LED-WW-400 / Ceiling Mount

VANESSA 4" Square LED Wall Wash Wet Location Luminaire w/ Ceiling Mount

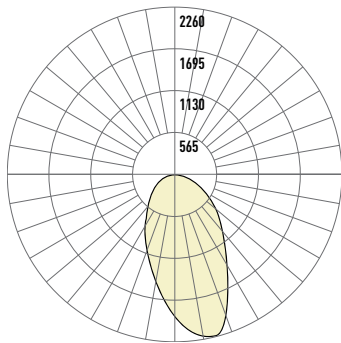
TYPE: \_\_\_\_\_  
 JOB NAME: \_\_\_\_\_

## CEILING MOUNT



## VAN-LED-WW-400-HLO-30-4

### PHOTOMETRIC CURVE:



**Direct (FW):** 1182 lm/ft  
**Total Lumens (4ft):** 4728 lm  
**Efficacy:** 131 lm/W  
**Wattage:** 36W  
**CCT/CRI:** 3000K / 80CRI

### LUMINANCE DATA (cd/sq.m):

Angle In Degrees	Average 0-Deg	Average 45-Deg	Average 90-Deg
45	1814	2510	5232
55	1169	1664	4229
65	571	958	2834
75	103	28	1341
85	3	7	218

### CANDELA DISTRIBUTION:

	0	10	20	30	40	50	60	70	80	90
0	907	907	907	907	907	907	907	907	907	907
5	1007	1000	1012	981	1002	973	991	953	925	927
10	1056	1064	1057	1035	1013	1011	984	956	929	911
15	1045	1050	1044	1048	1042	1026	1004	959	930	874
20	907	932	945	988	1016	1017	1005	961	905	845
25	740	762	782	832	899	959	969	942	877	800
30	623	617	638	672	745	839	915	900	836	743
35	517	527	545	567	612	694	814	852	771	677
40	442	445	451	468	505	572	688	771	718	612
45	368	373	383	395	415	470	558	665	651	522
50	312	304	307	320	339	382	450	550	567	439
55	238	240	242	252	271	305	360	427	466	356
60	172	172	180	188	210	235	271	315	357	265
65	113	114	120	129	148	167	193	227	252	187
70	60	62	66	76	90	107	124	141	160	116
75	19	19	22	29	38	49	63	75	82	61
80	3	3	4	4	7	12	19	27	30	24
85	1	1	1	1	1	1	2	3	5	5
90	0	0	0	0	0	0	0	0	0	0

### ZONAL LUMEN:

Zone	Lumens
0-10	97
10-20	275
20-30	411
30-40	488
40-50	500
50-60	452
60-70	360
70-80	217
80-90	62

### CCT SCALING FACTOR

CCT	2700K	3000K	3500K	4000K
80 CRI	-	0.97	1.00	1.02
90 CRI	0.79	0.83	0.86	0.88